



Lola

2 bedroom + den

Indoor Living - 860 sq. ft.
Outdoor Living - 138 sq.ft.
Total Living - 998 sq. ft.



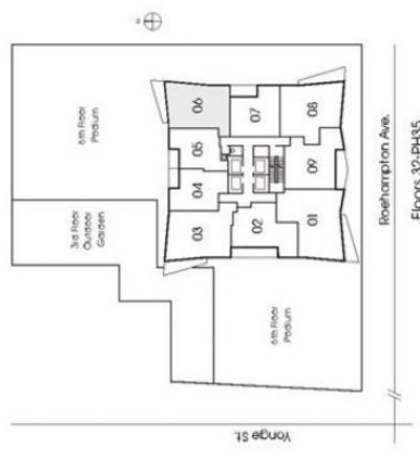
Alternate balcony condition on 3rd and 5th floor.
See Sales Representative.



Helendale

2 bedroom

Indoor Living - 836 sq. ft.
Outdoor Living - 120 sq.ft.
Total Living - 956 sq. ft.





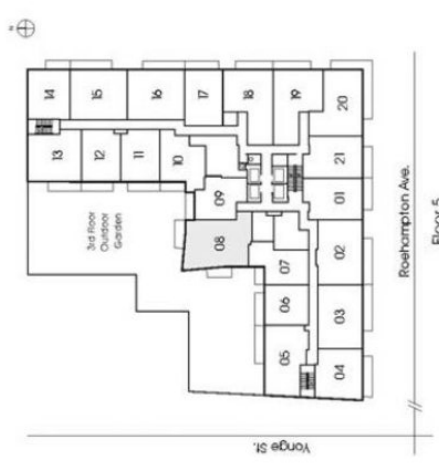
Lytton

2 bedroom + den

Indoor Living - 920 sq. ft.

Outdoor Living - 139 sq.ft.

Total Living - 1,059 sq. ft.



Terrace Condition on 3rd Floor.
See Sales Representative.



Holly

2 bedroom + den

Indoor Living - 803 sq. ft.

Outdoor Living - 133 sq.ft.

Total Living - 936 sq. ft.



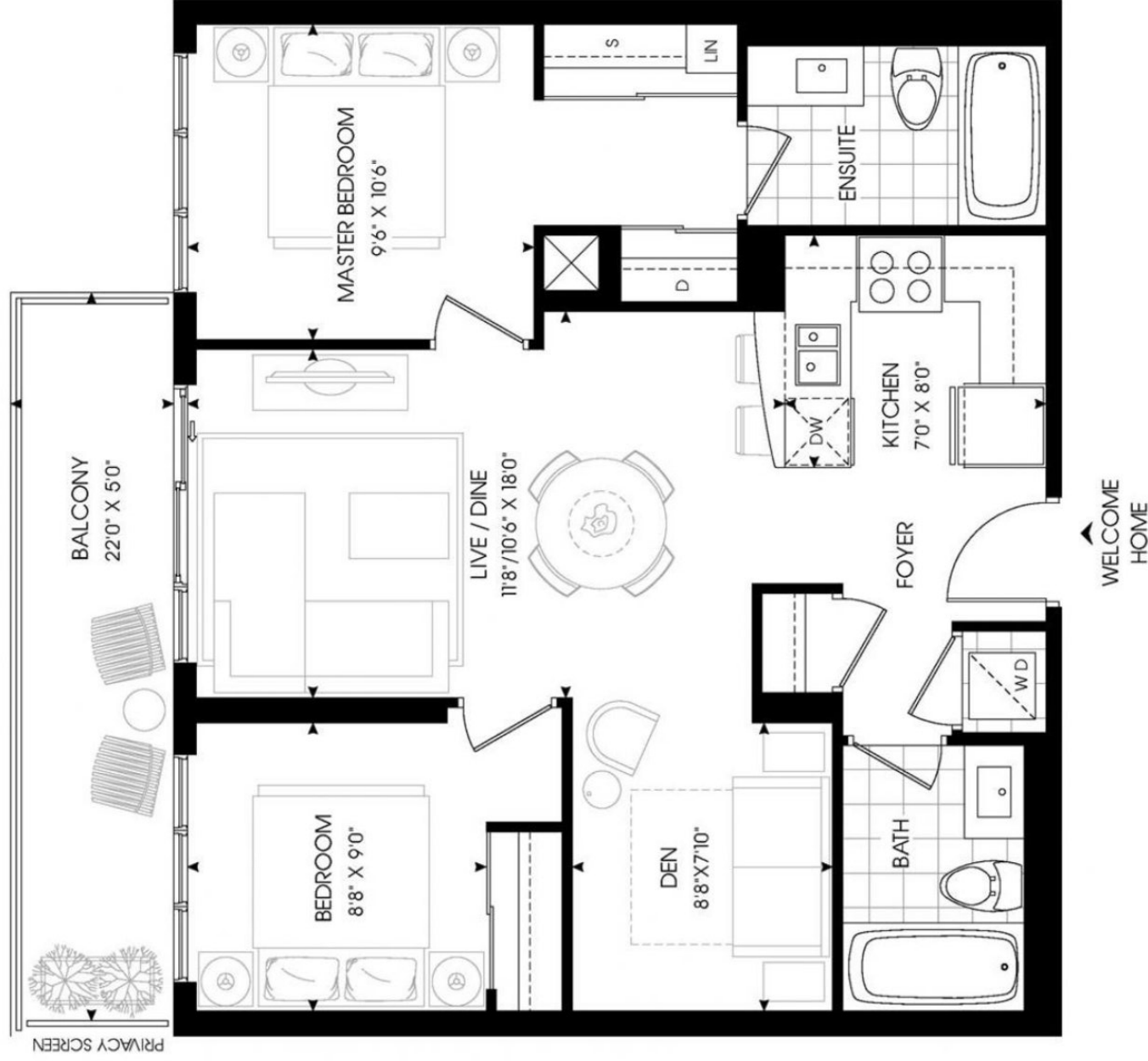
Alternate balcony condition on 5th floor.
See Sales Representative.



Lascelles

2 bedroom + den

Indoor Living - 817 sq. ft.
Outdoor Living - 110 sq.ft.
Total Living - 927 sq. ft.



Alternate balcony condition on 3rd and 5th floor.
See Sales Representative.



Briar Hill

1 bedroom + den

Indoor Living - 608 sq. ft.

Outdoor Living - 57 sq.ft.

Total Living - 665 sq. ft.





Erskine 2 bedroom

Indoor Living - 716 sq. ft.
Outdoor Living - 125 sq.ft.
Total Living - 841 sq. ft.



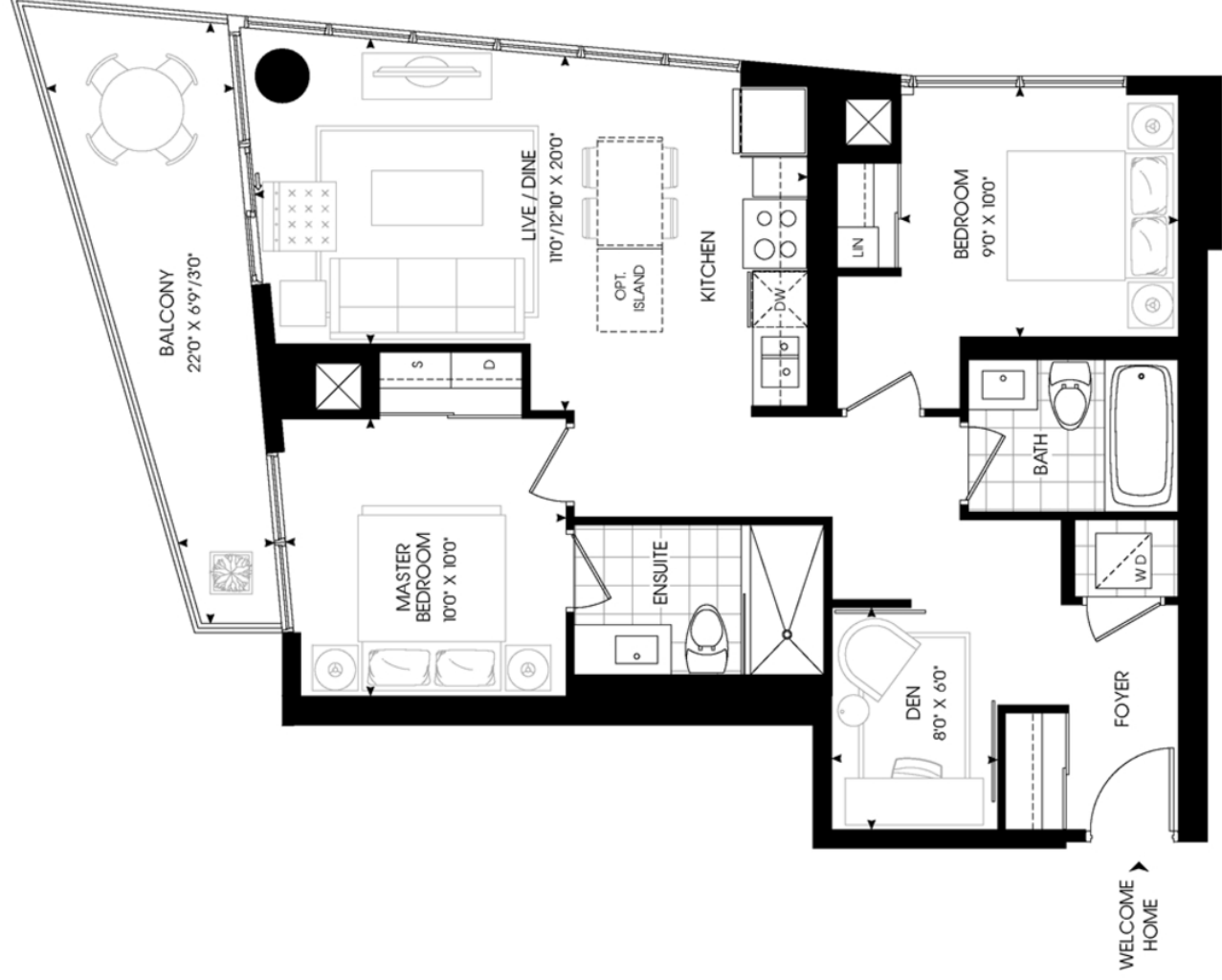
Hadley

2 Bedroom + Den

Indoor 862 sq. ft.

Outdoor 120 sq.ft.

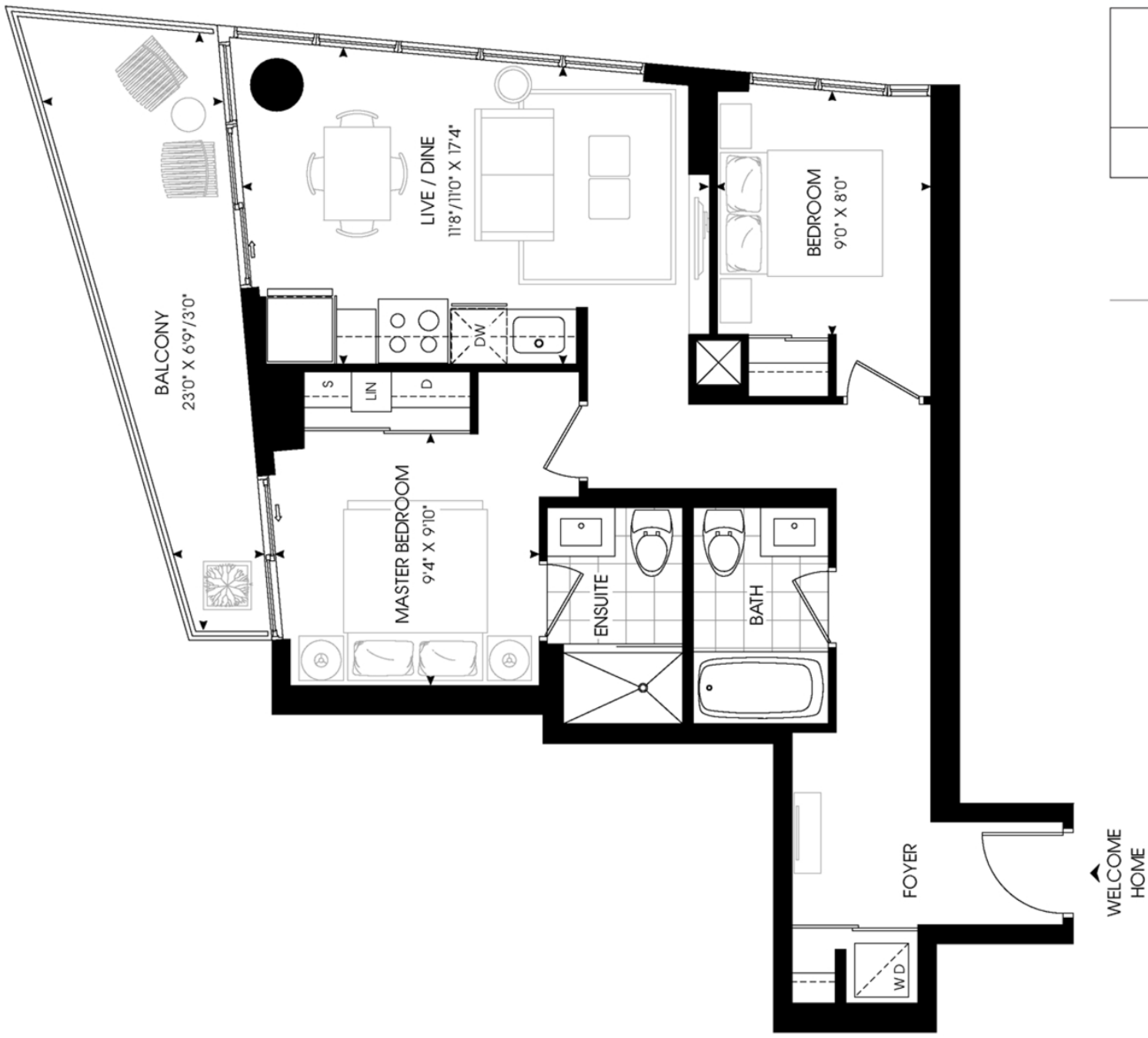
Total 982 sq. ft.





Eglinton 2 bedroom

Indoor Living - 716 sq. ft.
Outdoor Living - 120 sq.ft.
Total Living - 836 sq. ft.





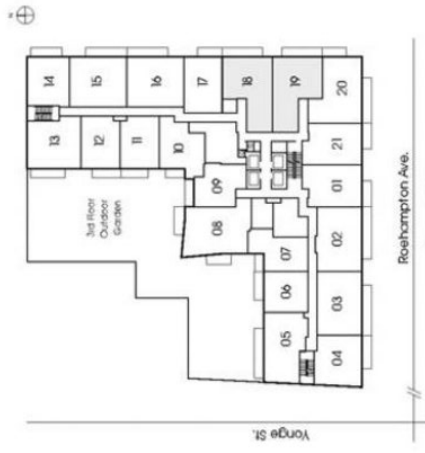
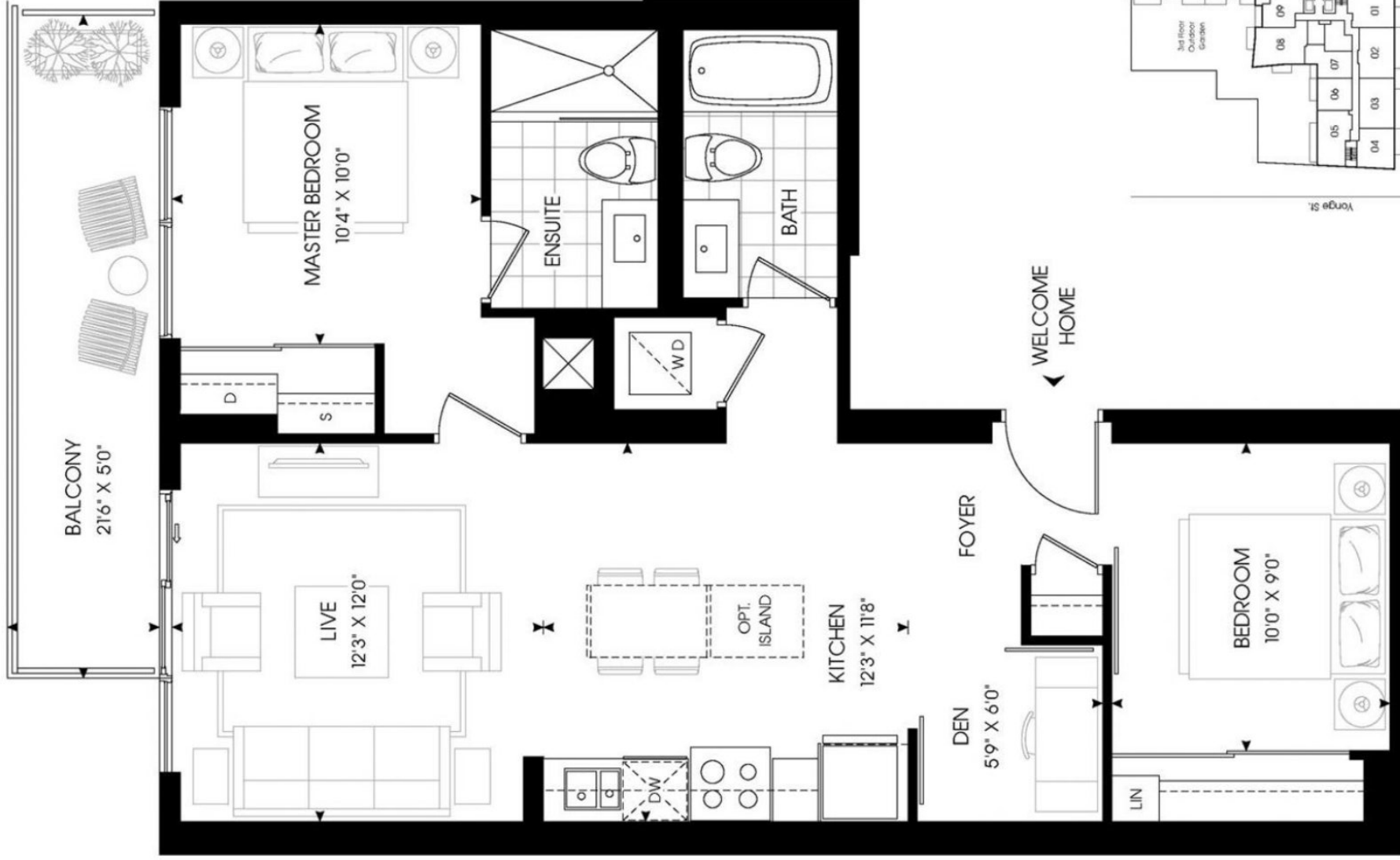
Highbourne

2 bedroom + den

Indoor Living - 846 sq. ft.

Outdoor Living - 108 sq.ft.

Total Living - 954 sq. ft.



Alternate balcony condition on 3rd and 5th floor.
See Sales Representative.



Bayview

1 bedroom

Indoor Living - 588 sq. ft.
Outdoor Living - 57 sq.ft.
Total Living - 645 sq. ft.

