

**THE  
DARTMOUTH**


— SUITE 203 —  
**ONE BEDROOM + DEN**

INTERIOR  
1,032 SQ.FT.



**SCHOOLHOUSE**  
— *Inspired Living in The Annex* —

Sizes and specifications are subject to change without notice. E. & C.E. Actual useable space may vary from any stated floor area. All dimensions are approximate and are subject to normal construction variances. Measurement of rooms set forth on any plan may be taken at the widest points of each given room (as if the room were a perfect rectangle), without regard for any cutouts.






**THE  
NOTRE DAME**

— SUITE 303 —

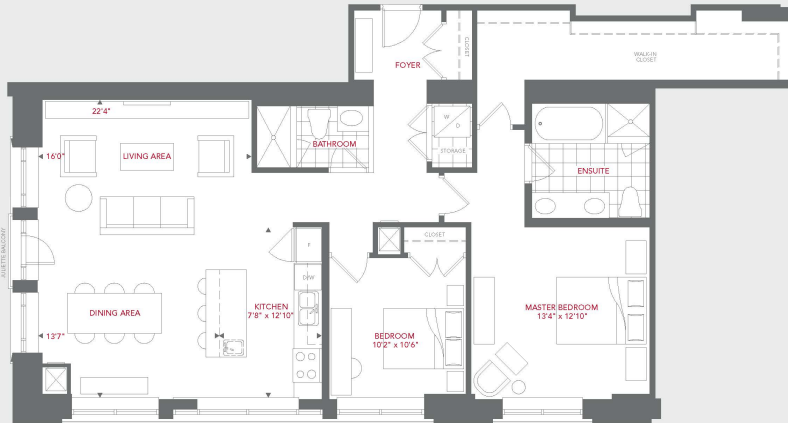
**ONE BEDROOM + DEN**

INTERIOR  
1,032 SQ.FT.


**SCHOOLHOUSE**  
— Inspired Living in The Annex —

Sizes and specifications are subject to change without notice. E. & C.E. Actual useable space may vary from any stated floor area. All dimensions are approximate and are subject to normal construction variances. Measurement of rooms set forth on any plan may be taken at the widest points of each given room (or, if the room were a perfect rectangle), without regard for any cutouts.



# THE QUEEN'S

— SUITE 204 —

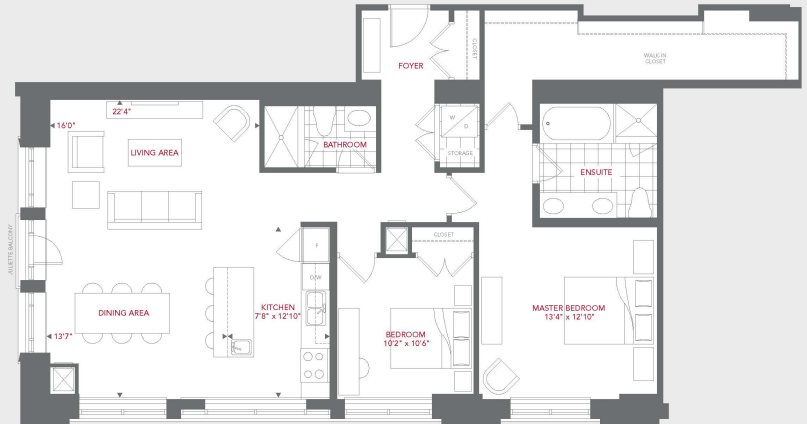
TWO BEDROOM

INTERIOR  
1,393 SQ.FT.



**SCHOOLHOUSE**  
— Inspired Living in The Annex —

Sizes and specifications are subject to change without notice. E. & C.E. Actual useable space may vary from any stated floor area. All dimensions are approximate and are subject to normal construction variances. Measurement of rooms set forth on any plan may be taken at the widest points of each given room (as if the room were a perfect rectangle), without regard for any cutouts.



**THE  
IMPERIAL**  
 — SUITE 304 —  
**TWO BEDROOM**  
 INTERIOR  
 1,393 SQ.FT.



**SCHOOLHOUSE**  
*Inspired Living in The Annex*

Sizes and specifications are subject to change without notice. E. & O.E. Actual useable space may vary from any stated floor area. All dimensions are approximate and are subject to normal construction variances. Measurement of rooms set forth on any plan may be taken at the widest points of each given room (as if the room were a perfect rectangle), without regard for any cutouts.



# THE COLUMBIA

— SUITE 201 —  
TWO BEDROOM

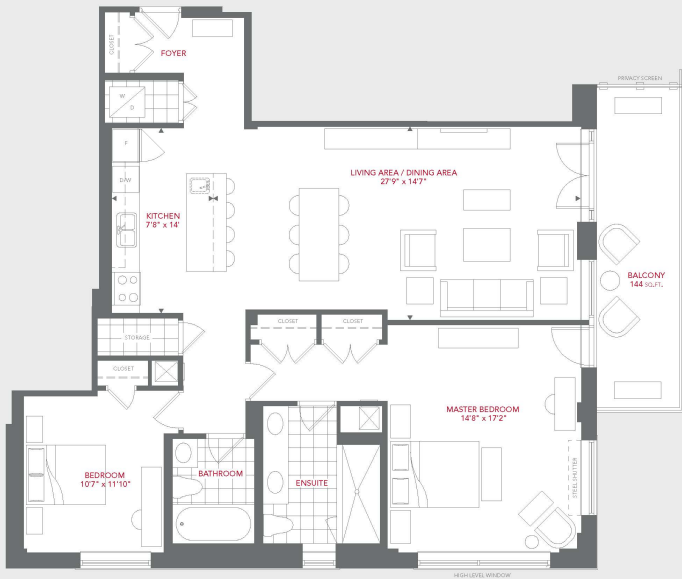
INTERIOR  
1,408 SQ.FT.

EXTERIOR  
144 SQ.FT.



**SCHOOLHOUSE**  
— Inspired Living in The Annex —

Sizes and specifications are subject to change without notice. E. & C.E. Actual useable space may vary from any stated floor area. All dimensions are approximate and are subject to normal construction variances. Measurement of rooms set forth on any plan may be taken at the widest points of each given room (as if the room were a perfect rectangle), without regard for any cutouts.

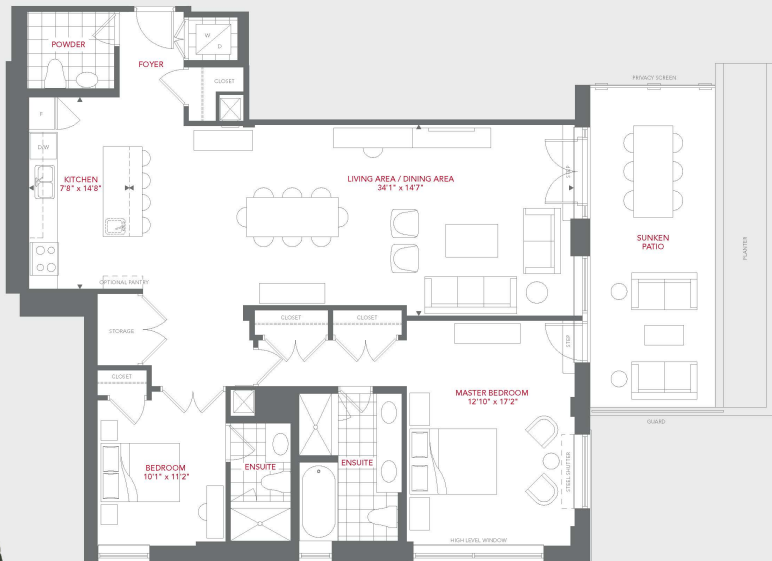


**THE**  
**U OF T**  
 — SUITE 302 —  
**TWO BEDROOM**  
 INTERIOR  
 1,460 SQ.FT.  
 EXTERIOR  
 144 SQ.FT.



**SCHOOLHOUSE**  
*Inspired Living in The Annex*

Sizes and specifications are subject to change without notice. E. & C.E. Actual useable space may vary from any stated floor area. All dimensions are approximate and are subject to normal construction variances. Measurement of rooms set forth on any plan may be taken at the widest points of each given room (as if the room were a perfect rectangle), without regard for any cutouts.



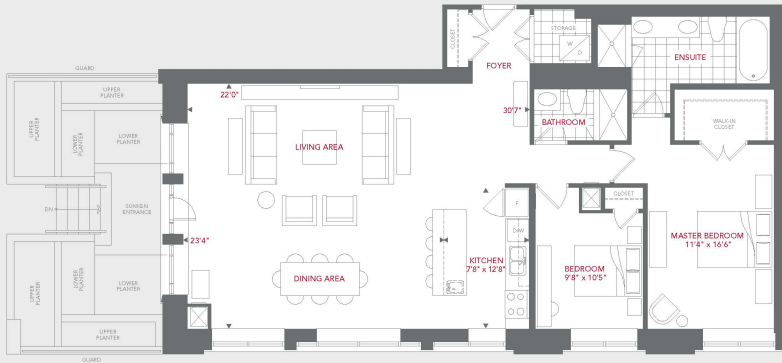
**THE CORNELL**  
— SUITE 102 —  
**TWO BEDROOM**  
INTERIOR  
1,538 SQ.FT.  
EXTERIOR  
318 SQ.FT.

N



**SCHOOLHOUSE**  
— Inspired Living in The Annex —

Sizes and specifications are subject to change without notice. E. & C.E. Actual useable space may vary from any stated floor area. All dimensions are approximate and are subject to normal construction variances. Measurement of rooms set forth on any plan may be taken at the widest points of each given room (as if the room were a perfect rectangle), without regard for any cutouts.



**THE BROWN**

— SUITE 103 —  
**TWO BEDROOM**

INTERIOR  
 1,574 SQ.FT.

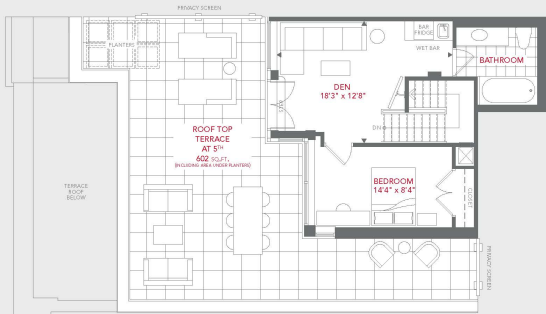


**SCHOOLHOUSE**  
*Inspired Living in The Annex*

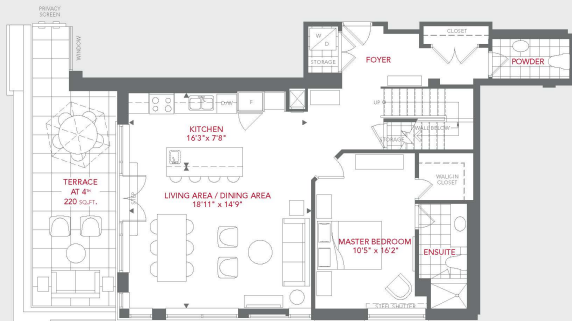
Sizes and specifications are subject to change without notice. E. & D.E. Actual useable space may vary from any stated floor area. All dimensions are approximate and are subject to normal construction variances. Measurement of rooms set forth on any plan may be taken at the widest points of each given room (as if the room were a perfect rectangle), without regard for any cutouts.



**UPPER LEVEL**  
INTERIOR  
544 SQ.FT.



**LOWER LEVEL**  
INTERIOR  
1,093 SQ.FT.



**THE PRINCETON**

— PENTHOUSE IV —

**TWO BEDROOM + DEN**

INTERIOR  
1,637 SQ.FT.

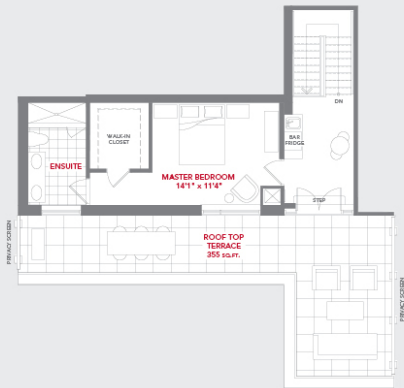
EXTERIOR  
822 SQ.FT. TOTAL



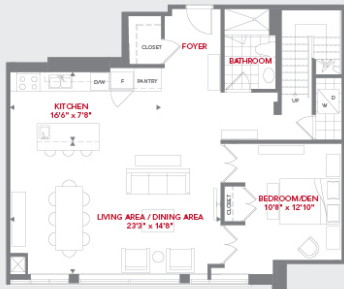
**SCHOOLHOUSE**  
— Inspired Living in The Annex —

Sizes and specifications are subject to change without notice. E. & D.E. Actual useable space may vary from any stated floor area. All dimensions are approximations and are subject to normal construction variances. Measurement of rooms set forth on any plan may be taken at the widest points of each given room (as if the rooms were a perfect rectangle), without regard for any outcets.

UPPER LEVEL  
INTERIOR  
577 SQ.FT.



LOWER LEVEL  
INTERIOR  
1,061 SQ.FT.



**SCHOOLHOUSE**  
— Inspired Living in The Annex —

Sizes and specifications are subject to change without notice. E. & O.E. Actual useable space may vary from any stated floor area. All dimensions are approximate and are subject to normal construction variances. Measurement of rooms set forth on any plan may be taken at the widest points of each given room (as if the room were a perfect rectangle), without regard for any alcove.



## THE HARVARD

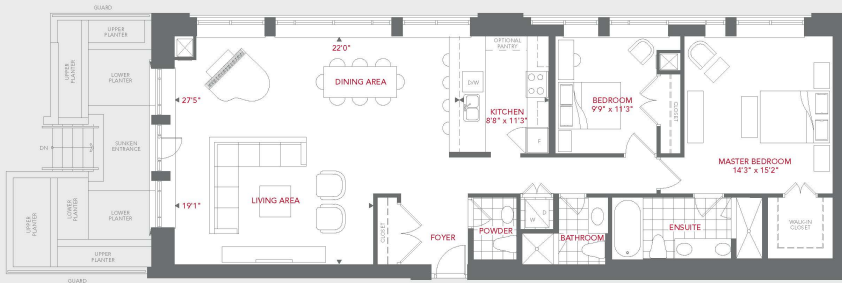
— FENTHOUSE III —

TWO BEDROOM OR  
ONE BEDROOM + DEN

INTERIOR  
1,638 SQ.FT.

EXTERIOR  
355 SQ.FT.





**THE  
BERKELEY**

— SUITE 104 —

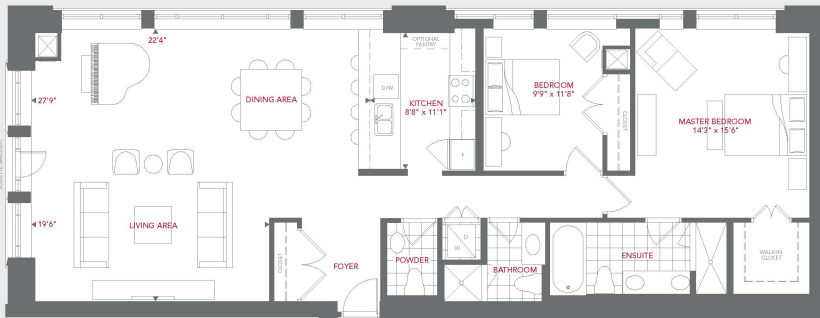
**TWO BEDROOM**

INTERIOR  
1,673 SQ.FT.



**SCHOOLHOUSE**  
— Inspired Living in The Annex —

Sizes and specifications are subject to change without notice. E. & D.E. Actual useable space may vary from any stated floor area. All dimensions are approximate and are subject to normal construction variances. Measurement of rooms set forth on any plan may be taken at the widest points of each given room (as if the room were a perfect rectangle), without regard for any outsets.



**THE  
M<sup>C</sup>GILL**

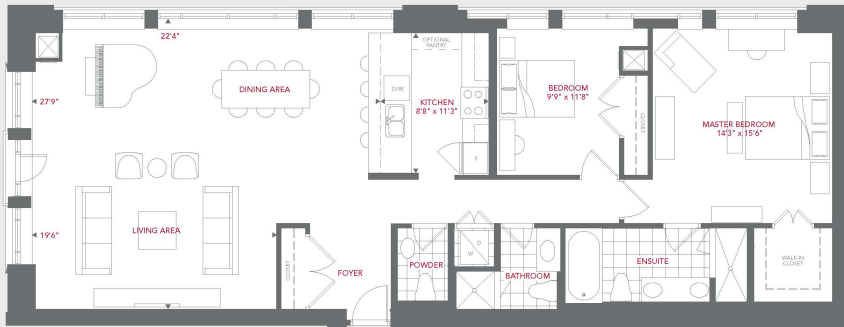
— SUITE 205 —  
**TWO BEDROOM**

INTERIOR  
1,680 SQ.FT.



**SCHOOLHOUSE**  
— Inspired Living in The Annex —

Sizes and specifications are subject to change without notice. E. & C.E. Actual useable space may vary from any stated floor area. All dimensions are approximate and are subject to normal construction variances. Measurement of rooms set forth on any plan may be taken at the widest points of each given room (or, if the room were a perfect rectangle), without regard for any cutouts.



**THE VASSAR**

— SUITE 305 —  
**TWO BEDROOM**

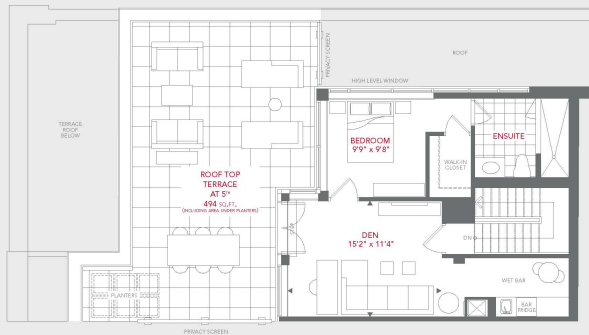
INTERIOR  
 1,680 SQ.FT.



**SCHOOLHOUSE**  
 — Inspired Living in The Annex —

Sizes and specifications are subject to change without notice. E. & C.E. Actual useable space may vary from any stated floor area. All dimensions are approximate and are subject to normal construction variances. Measurement of rooms set forth on any plan may be taken at the widest points of each given room (or if the room were a perfect rectangle), without regard for any cutouts.

UPPER LEVEL  
INTERIOR  
641 SQ.FT.



LOWER LEVEL  
INTERIOR  
1,407 SQ.FT.



THE  
**YALE**  
— PENTHOUSE V —  
TWO BEDROOM + DEN

INTERIOR  
2,048 SQ.FT.

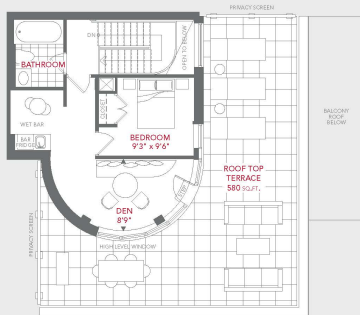
EXTERIOR  
714 SQ.FT. TOTAL



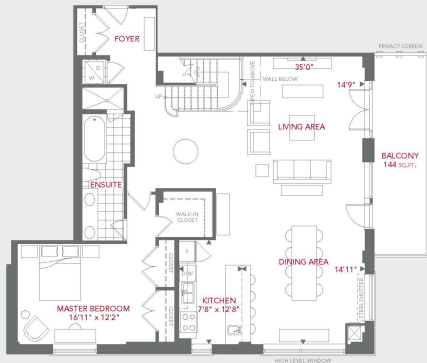
**SCHOOLHOUSE**  
— Inspired Living in The Annex —

Sizes and specifications are subject to change without notice. E. & D.E. Actual useable space may vary from any stated floor area. All dimensions are approximates and are subject to normal construction variances. Measurement of rooms set forth on any plan may be taken at the widest points of each given room (as if the rooms were a perfect rectangle), without regard for any cutouts.

**UPPER LEVEL**  
 INTERIOR  
 568 SQ.FT.



**LOWER LEVEL**  
 INTERIOR  
 1,503 SQ.FT.



**SCHOOLHOUSE**  
*Inspired Living in The Annex*

Sizes and specifications are subject to change without notice. E. & D.E. Actual useable space may vary from any stated floor area. All dimensions are approximate and are subject to normal construction variances. Measurement of rooms set forth on any plan may be taken at the widest points of each given room (as if the rooms were a perfect rectangle), without regard for any cutouts.



**THE  
 STANFORD**

— PENTHOUSE II —

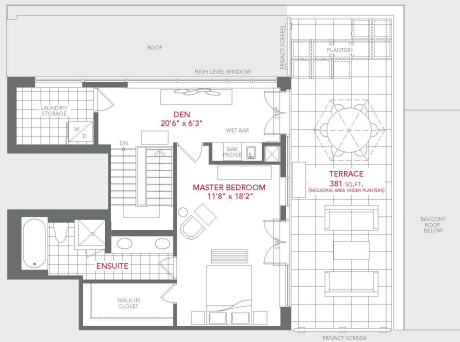
**TWO BEDROOM + DEN**

INTERIOR  
 2,071 SQ.FT.

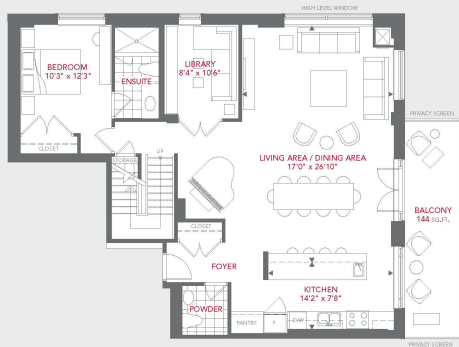
EXTERIOR  
 724 SQ.FT. TOTAL



**UPPER LEVEL**  
 INTERIOR  
 763 SQ.FT.



**LOWER LEVEL**  
 INTERIOR  
 1,329 SQ.FT.



**THE OXFORD**

— PENTHOUSE I —

**TWO BEDROOM + LIBRARY**

INTERIOR  
 2,092 SQ.FT.

EXTERIOR  
 525 SQ.FT. TOTAL



**SCHOOLHOUSE**  
*Inspired Living in The Annex*

Sizes and specifications are subject to change without notice. E. & D.E. Actual useable space may vary from any stated floor area. All dimensions are approximations and are subject to normal construction variances. Measurement of rooms set forth on any plan may be taken at the widest points of each given room (as if the room were a perfect rectangle), without regard for any outcrops.