

**thearad**  
one bedroom + den

**830 sq.ft.**

218

385 sq.ft. terrace  
**1,215 sq.ft. total**

**830 sq.ft.**

300 | 420 | 530

129 sq.ft. balcony  
**959 sq.ft. total**



**ROMANO 0517 PRESENT:** Ron Romano bravely borrowed the "billionaire's club" of precision styles and created floorplans for firms with whimsical names. His early furniture combined materials associated with the high seas: "ship and" "dolphin lounge" to produce goods that exude "sea-synthetic." Andy's work often suggests movement through graphic, gestural lines of reference to organic forms. Exuberantly free-spirited, that design has a responsibility to help to bring our to support and delight.

level 2



level 3-5



ARND BRONKHORST ARCHITECTURE INC. 1000 10TH AVENUE, SUITE 2000

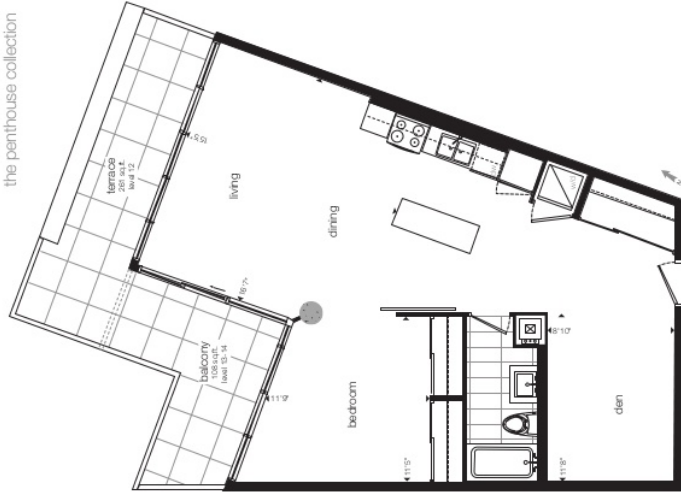
**themedra**  
one bedroom + den  
the penthouse collection



**850 sq.ft.**

lph 1204  
261 sq.ft. exterior  
**1,109 sq.ft. total**

mph 1206 | loph 1404  
108 sq.ft. exterior  
**956 sq.ft. total**



ALBERTO MEDA 1986-PRESENT / Alberto Meda represents the fusion of art and science, reason and inspiration. Technical innovation and formal virtuosity find their expression in the bold, full-on design. Much is achieved through his ability to use abstract, free-standing forms in ways that are visually striking as well as structurally sound.

The Light Tower also incorporates folded materials in using its structural materials in a non-traditional context, achieving remarkable strength and lightness.

level 12 penthouse

loads 13-14 penthouse



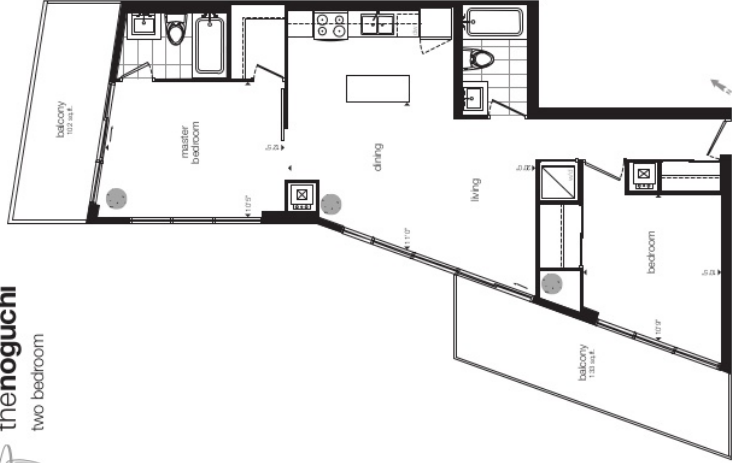


## thenoguchi two bedroom

**890 sq.ft.**

813 | 914 | 1014 | 1114  
1212 | 1312 | 1412

235 sq.ft. exterior  
**1,125 sq.ft. total**



**ISAMU HOSHIGUCHI 1964-1988** — How does objective form fit the surrounding environment? This project creates a theme that runs through the work of Isamu Noguchi passed in different ways as “void spaces”. He accepted to bring landscape features to the entry objects he designed for common use. Hoshiguchi's work throughout always to reach an architectural practice, the architect works in detail, just details enough to meet the demand of art form and space.

level 8

levels 9-11

levels 12-14



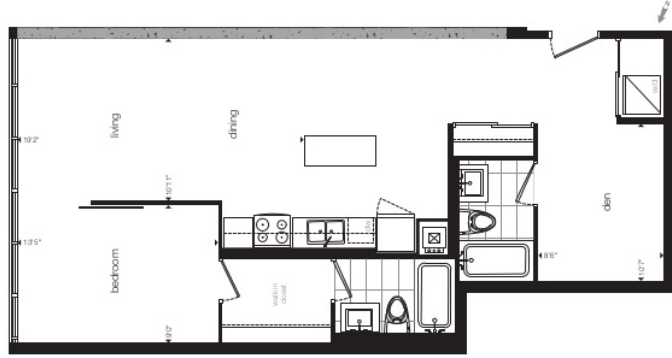
Architectural space: the way to build a building. © 2022



thearnio  
one bedroom + den

905 sq.ft.

203



EERDARNIO 1902-PRESENT : Earno Arnio seeks - availability - view of the premises in using photos in industrial design. Possible material and this design is free to create every appearance can every color may work. The plan aims to optimize including kitchen function and den - but always depending on use.

level 2



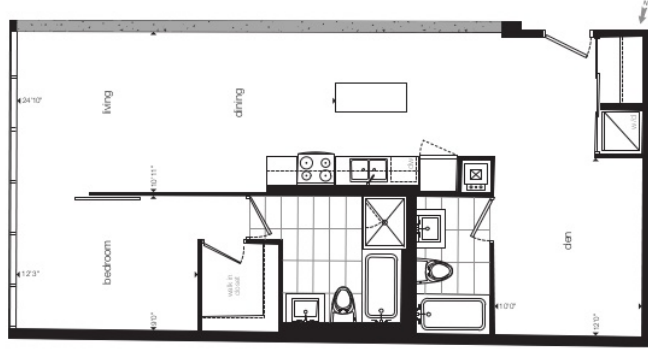
Plan of units level 203 with kitchen and bathroom. © 2022



thenelson  
one bedroom + den

942 sq. ft.

305 | 405 | 505



GEORGE NELSON 1907-1988: AIA student, teacher and practitioner of architectural design, Nelson became the architect of design for furniture giant Herman Miller. There he designed such influential pieces as the Marimekko table and Coaster chair. Nelson was a believer in doing less with more and focused the notion of a design should do "everything with nothing."

block 3-5



ALL RIGHTS RESERVED BY ARCHITECTURE BY NINE ©2014







thesaarinen  
one bedroom + den



ERIKSAAFINEN 1950S UNIT - known as an architectural gem for his ground-breaking and sculptural organic forms for the Tomo World Atrium Terminal at F.K. Airport and Dulles International Airport in Washington DC. Saarinen intended to design administration his creation of "organic design for homes far a range" best represented in his World's Collection of Furniture and the Tappi Chair.

levels 3-11



Photo credit: SAARINEN ARCHITECTS, INC. © 2014

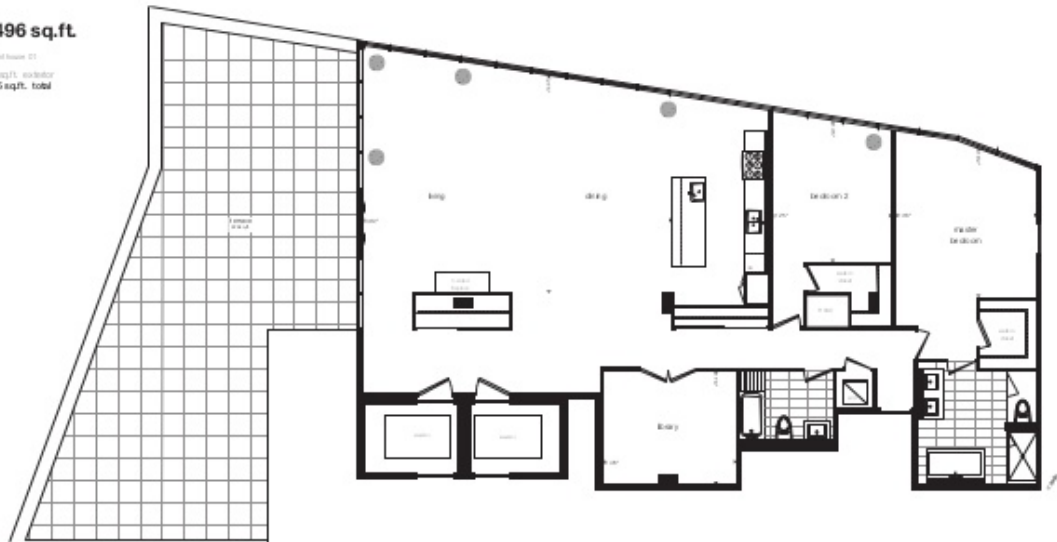


**thevanderrohe**  
two bedroom + den  
the penthouse collection

**2,496 sq.ft.**

sq. penthouse 03

979 sq.ft. exterior  
3,475 sq.ft. total



sq. penthouse 03

