

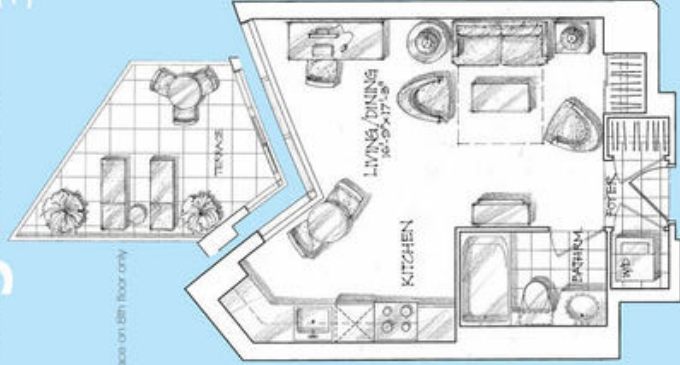


flamingo

BACHELOR

377 sq.ft.

terrace on 5th floor only



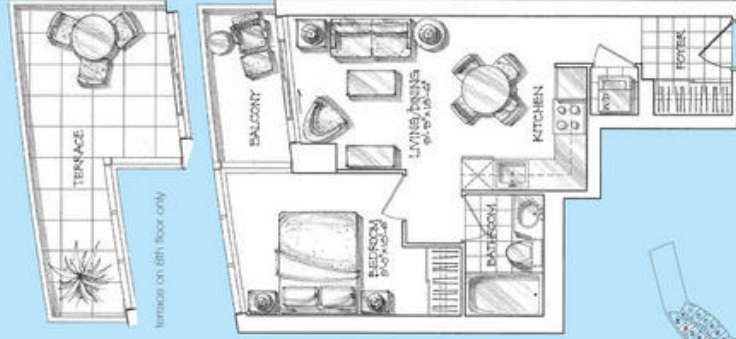
13th-24th Floors

4th-12th Floors

All dimensions and drawings are approximate. Dimensions subject to change without notice. Actual square footage may vary.
© 2014 Flamingo Apartments, LLC. All rights reserved.

nassau ONE-BEDROOM

483 sq. ft.

SOLD OUT

8th-13th Floors

13th-14th Floors

All dimensions and drawings are approximate, subject to change without notice. Floor plans subject to change without notice.
 See the actual floor plan, location and included.

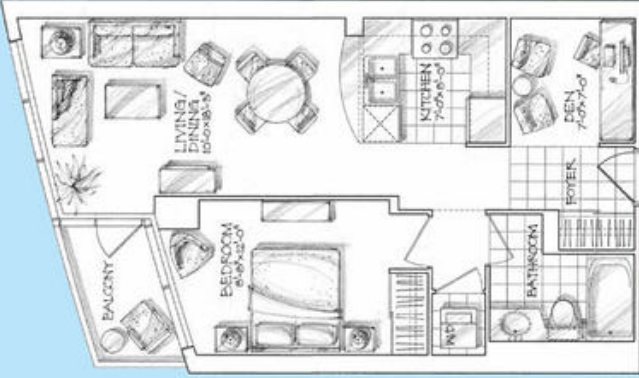
boca

ONE BEDROOM + DEN

VIEW SUITES



624sq.ft.



SOLD OUT



2nd-4th Floors

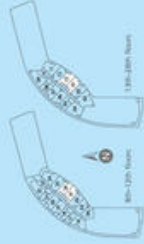
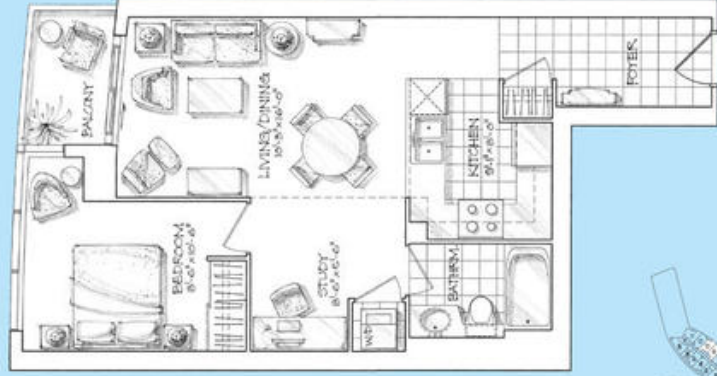
2nd-5th Floors

All dimensions and drawings are approximate. Information subject to change without notice. Actual square footage may vary.
View this suite! See you at Boca! See you at Boca!



ventura

ONE BEDROOM + DEN
641 sq.ft.



All dimensions and drawings are approximate. Information subject to change without notice. Actual layout through the unit may vary. ©2010 New York, New York City Housing Corp.

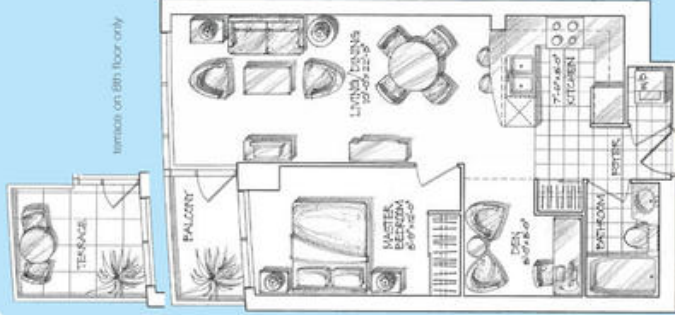
biscayne

ONE BEDROOM + DEN

642 sq. ft.

SOLD OUT

VIEW SUITES



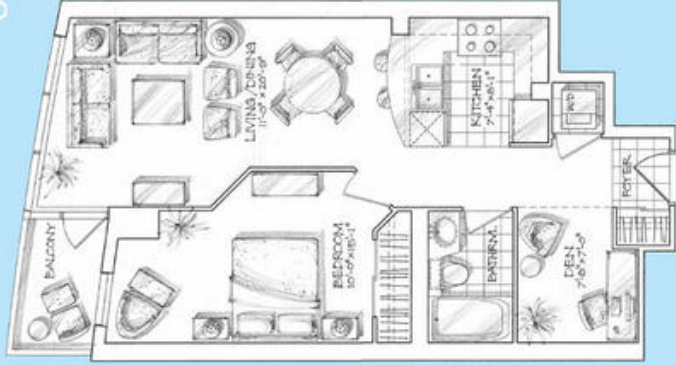
All dimensions and drawings are approximate. Information subject to change without notice. Actual layout subject to site.
© 2014 Biscayne Bay, Inc. All rights reserved.

monteray

ONE BEDROOM + DEN

663 sq.ft.

SOLD OUT



All dimensions and drawings are approximate. Measurements subject to change without notice. Actual square footage may vary.
 Visit the website for details. Features not to scale.

coral

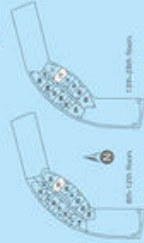
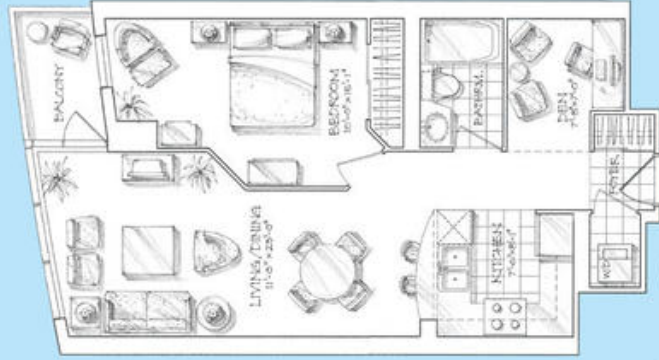
ONE BEDROOM + DEN

VIEW SUITES



681 sq.ft.

SOLD OUT



All dimensions and drawings are approximate. Measurements subject to change without notice. Actual square footage may vary. Floor only, subject to floor plan, Architectural & Structural.

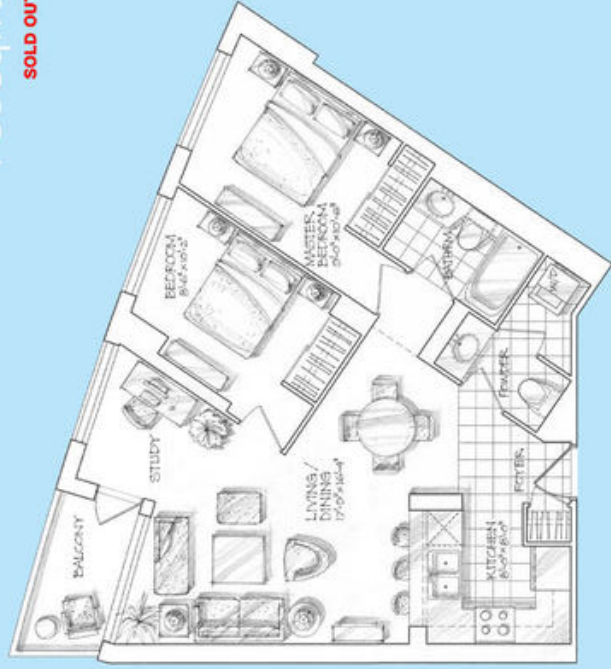
VIEW SUITES

freepoint

TWO-BEDROOM

780 sq. ft.

SOLD OUT

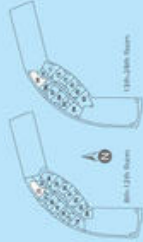
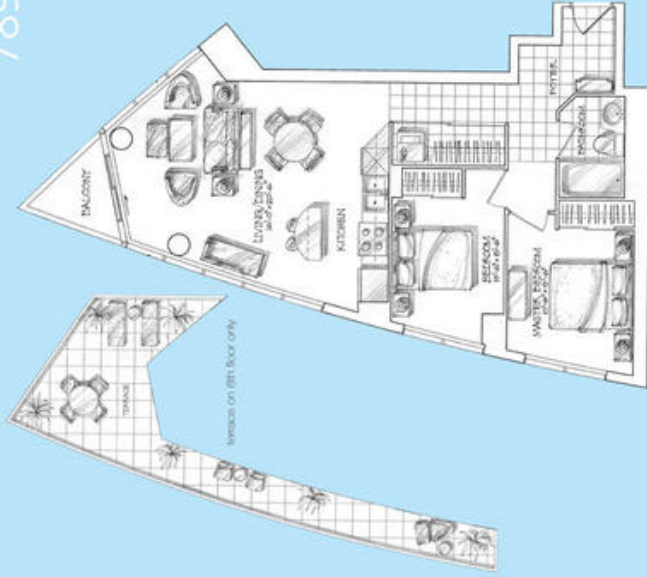


All dimensions and drawings are approximate. Information subject to change without notice. All-dwelling layouts may vary. View this model for your location and location.

hampton

TWO-BEDROOM

789 sq. ft.



All dimensions and drawings are approximate. Measurements subject to change without notice. All rights reserved. © 2011 Hampton Homes, Inc.

grand palm

TWO BEDROOM

792 sq.ft.

SOLD OUT

6th-12th Floors

13th-26th Floors

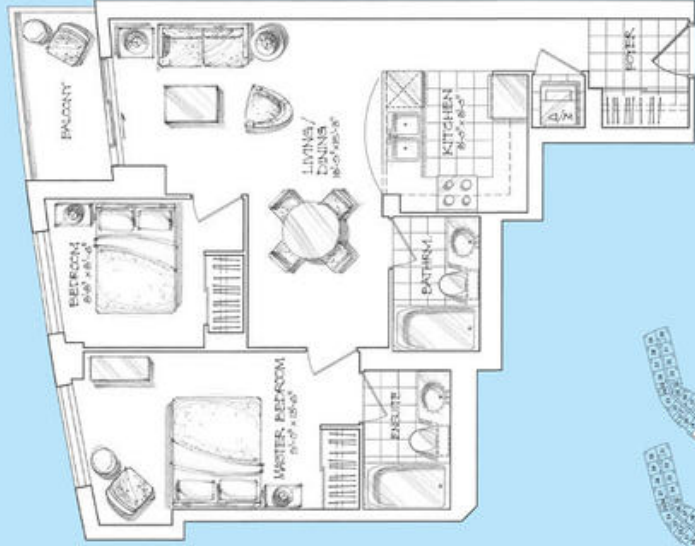
All dimensions are based on the architectural drawings. Dimensions subject to change without notice. Actual square footage may vary from the stated square footage. ©2014 Grand Palm LLC

nevis

TWO-BEDROOM

792 sq. ft.

VIEW SUITES



All dimensions and drawings are approximate, and items subject to change without notice. Actual layout, fixtures and finish may vary.

VIEW SUITES

atlantis

TWO-BEDROOM

876 sq. ft.

SOLD OUT

Terrace on 13th floor only



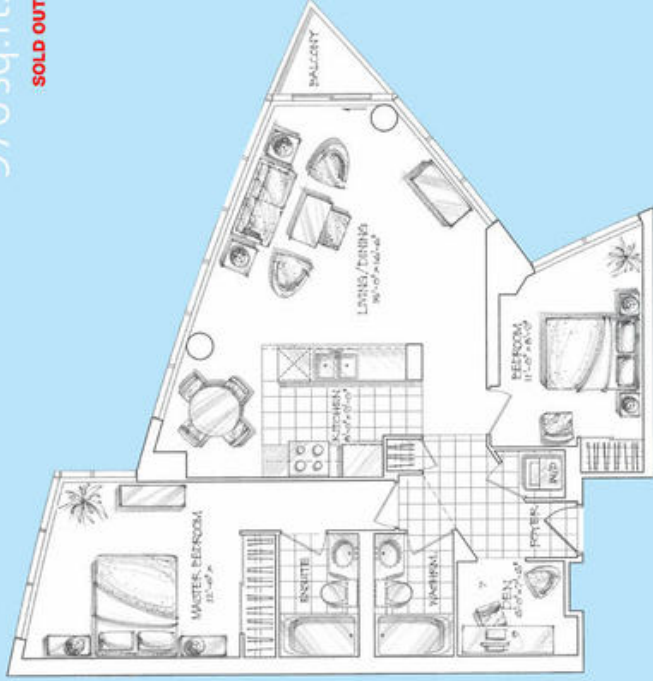
13th floor

All dimensions and drawings are approximate. Measurements subject to change without notice. Actual square footage may vary. Photo may not be exact. Atlantis is a trademark.

key west

TWO BEDROOM + DEN

976sq.ft.

SOLD OUT

All dimensions and square foot measurements are approximate. Measurements subject to change without notice. Actual square footage may vary.
 © 2014 Key West Properties, Inc. All rights reserved.