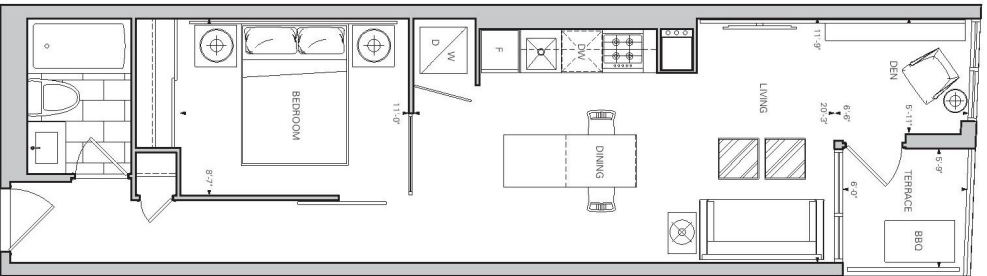


Loft 307
 1 Bedroom
 518 sq.ft.
 Terrace 57 sq.ft.



Kerplan Floor 3

Les dimensions indiquées sur le plan de l'unité sont données à titre indicatif. Elles ne constituent pas une garantie de mesure. Les dimensions réelles peuvent varier légèrement des dimensions indiquées sur le plan. Les dimensions indiquées sur le plan sont données à titre indicatif. Elles ne constituent pas une garantie de mesure. Les dimensions réelles peuvent varier légèrement des dimensions indiquées sur le plan. Les dimensions indiquées sur le plan sont données à titre indicatif. Elles ne constituent pas une garantie de mesure. Les dimensions réelles peuvent varier légèrement des dimensions indiquées sur le plan.

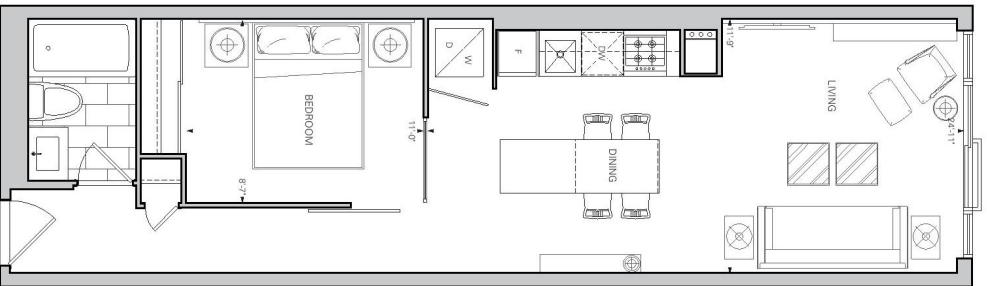


Loft 304
 1 Bedroom + Den
 55.3 sq.ft.
 Terrace 36 sq.ft.



Keyplan Floor 3

All dimensions approximate and do not necessarily reflect the actual dimensions of the unit. Seller is not a licensed contractor. Buyer, Seller and Applicant agree to design and construct, E.O.C. The Applicant agrees to include an appropriate title block on all drawings and to provide the following information: Name of Applicant, City, State, Zip, and Applicant's contact information. The Applicant agrees to provide the following information: Name of Applicant, City, State, Zip, and Applicant's contact information. The Applicant agrees to provide the following information: Name of Applicant, City, State, Zip, and Applicant's contact information.



All dimensions approximate and of low accuracy. All other dimensions subject to change without notice. © 2017 The Apartment Group or its affiliates. All rights reserved. No part of this publication may be reproduced, stored in a retrieval system, or transmitted, in any form or by any means, electronic, mechanical, photocopying, recording, or by any information storage and retrieval system, without the prior written permission of The Apartment Group or its affiliates. All other dimensions subject to change without notice.

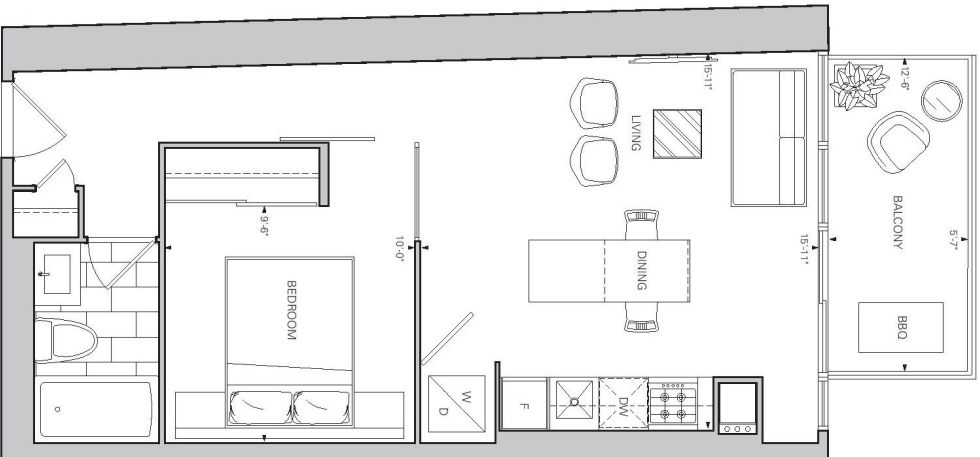
Loft 202

1 Bedroom
562 sq.ft.



Loft 301

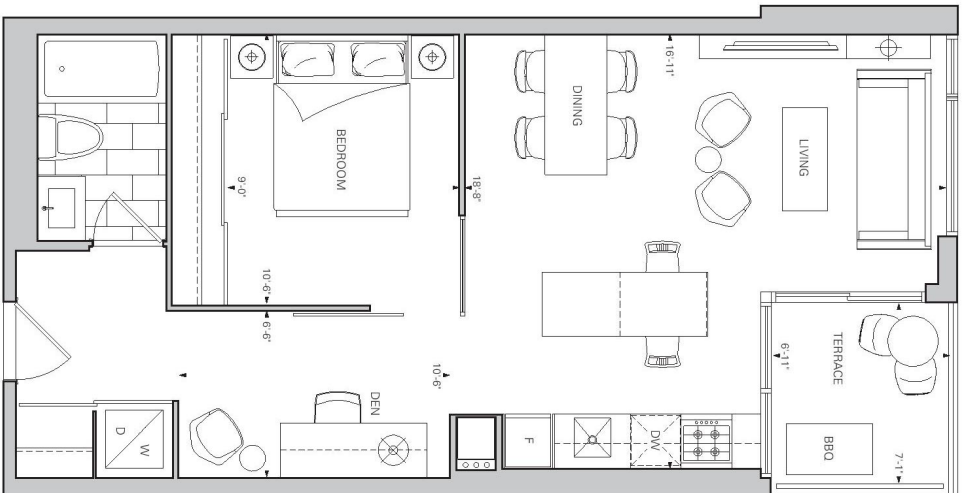
1 Bedroom
580 sq.ft.
Balcony 78 sq.ft.



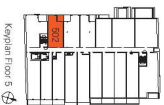
© 2014 American International Real Estate Company. All rights reserved. The floor plan is a representation of the general layout of the unit. It is not intended to be a contract. The actual unit may vary from the floor plan. The floor plan is not intended to be a contract. The actual unit may vary from the floor plan. The floor plan is not intended to be a contract. The actual unit may vary from the floor plan.



Kempin Floor 3



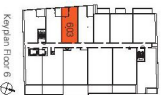
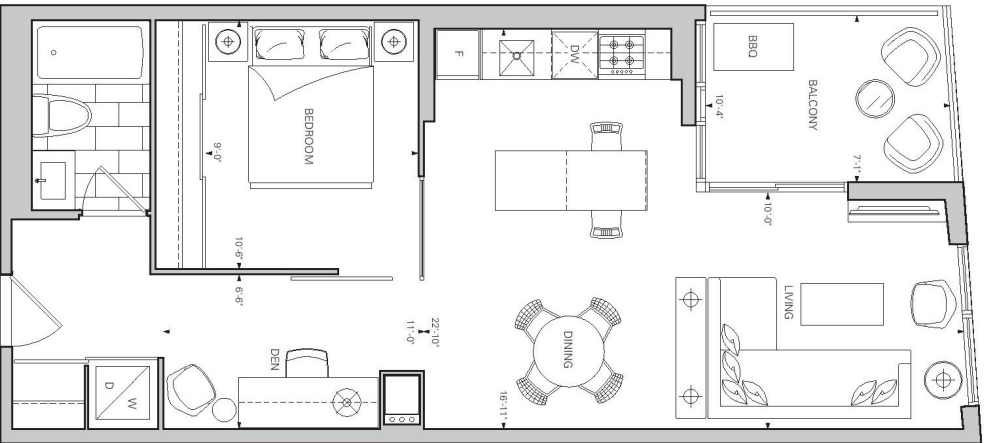
Loft 502
 1 Bedroom + Den
 620 sq.ft.
 Terrace 52 sq.ft.



Keplerian Floor 5

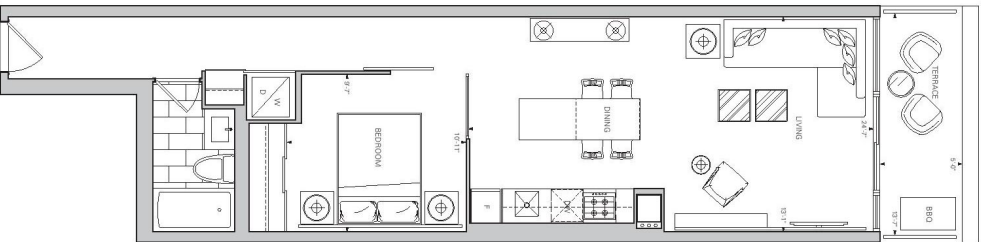
© 2014 Keplerian Architecture and Design. All rights reserved. This floor plan is a conceptual drawing and does not represent an actual floor plan. It is not to be used for construction purposes. The dimensions and area are approximate and may vary without notice. The floor plan is subject to change without notice. Keplerian Architecture and Design is not responsible for any errors or omissions in this floor plan. The floor plan is provided for informational purposes only. Keplerian Architecture and Design is not responsible for any errors or omissions in this floor plan. The floor plan is provided for informational purposes only.

Loft 603
1 Bedroom + Den
652 sq.ft.
Balcony / 76 sq.ft.



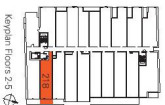
Keyplan Floor 6

All dimensions approximate and do not necessarily reflect actual field or site. Units are indicated in feet and inches. All dimensions subject to change without notice. © 2013 The Associated Builders and Contractors. All rights reserved. This floor plan is for informational purposes only. It is not intended to be used for construction or other purposes. All dimensions are approximate and subject to change without notice. All dimensions are approximate and subject to change without notice. All dimensions are approximate and subject to change without notice.



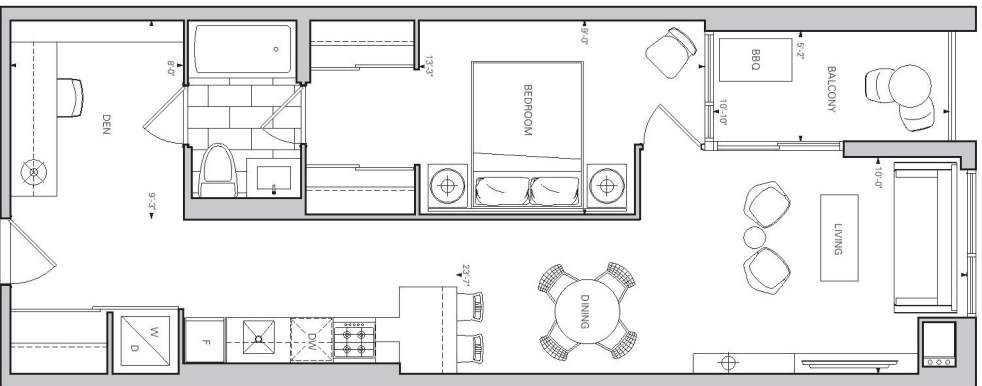
Loft
218
320
417
517

1 Bedroom + Den
 668 sq. ft.
 Terrace 69 sq. ft.
 Balconies on Floors -3-5



Keyplan Floors 2-5

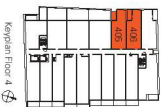
Interior design drawings are shown in 3-D illustration on this plan. All floor surface and wall coverings are shown in perspective view. Always consult floor plans or elevations on this plan. For more information or to schedule a viewing, please call (310) 200-3333. © 2010



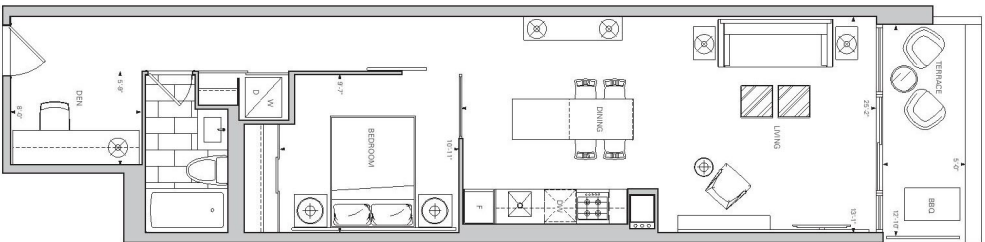
All dimensions approximate and do not necessarily reflect final construction. Unless indicated, fixtures, finishes, and materials are subject to change without notice. © 2018 The Apartment Group or its affiliates. All rights reserved.

Loft 405

1 Bedroom + Den
 705 sq. ft.
 Balcony 57 sq. ft.



Keyplan Floor 4

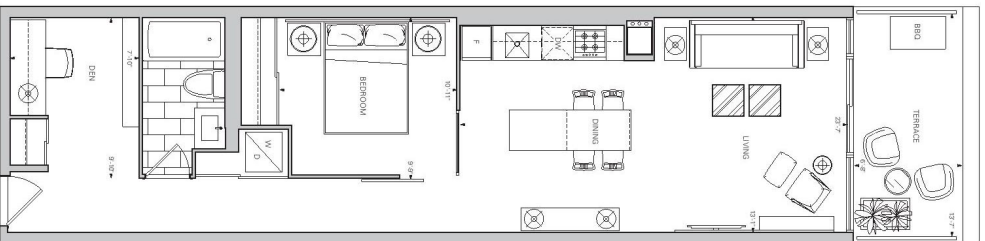


**Loft
217**
3196
516

1 Bedroom + Den
713 sq. ft.
Terrace 65 sq. ft.
Balconies on Floors 3-5



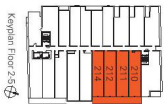
Keyplan Floors 2-5



Loft

210, **211**
212, **214**
315, **316**
409, **410**
411, **412**
501, **510**

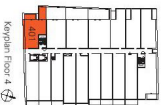
1 Bedroom + Den
 720 sq.ft.
 Terrace 91 sq.ft.
 Balconies on Floors 3-5



Kaydian Floor 25



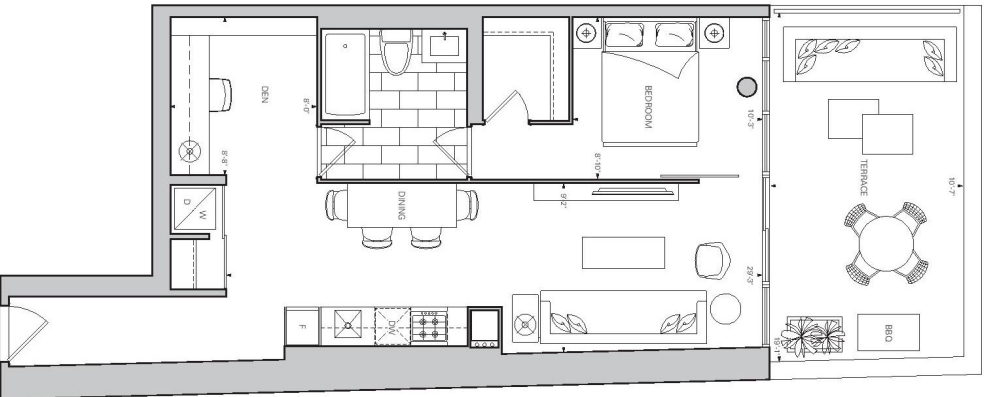
Loft 401
 1 Bedroom + Den
 730 sq. ft.
 Terrace &
 Balcony 198 sq. ft.



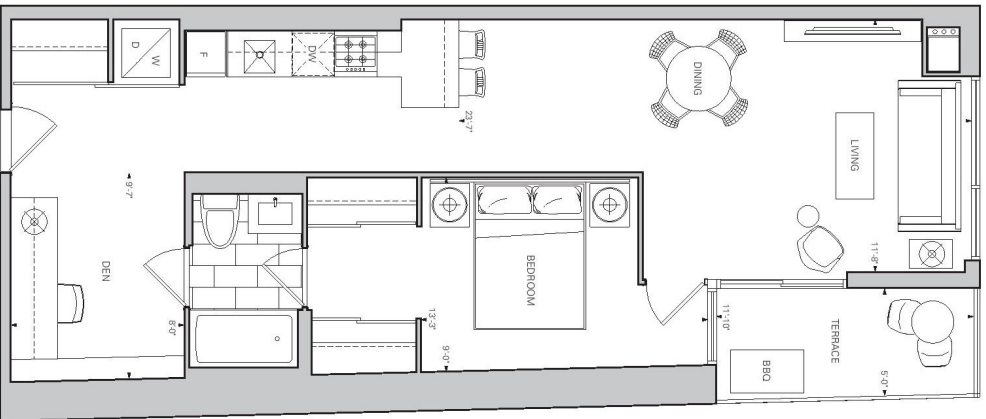
Kiplan Floor 4

© 2014 Kiplan Development, LLC. All rights reserved. Kiplan Development, LLC is not responsible for the accuracy of the information provided in this floor plan. The information provided in this floor plan is for informational purposes only and should not be used as a basis for any investment decision. The information provided in this floor plan is for informational purposes only and should not be used as a basis for any investment decision.

Loft 614
1 Bedroom + Den
751 sq.ft.
Terrace 202 sq.ft.

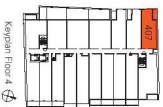


All dimensions approximate and all dimensions shown reflect the most efficient use of space. Unless an architectural feature, fixture, cabinet, and appliance is explicitly shown in a drawing, do not assume its location. The dimensions shown in this drawing are approximate only. The dimensions shown in this drawing are for informational purposes only and do not constitute a contract. The dimensions shown in this drawing are for informational purposes only and do not constitute a contract. The dimensions shown in this drawing are for informational purposes only and do not constitute a contract. The dimensions shown in this drawing are for informational purposes only and do not constitute a contract.



Loft 407

1 Bedroom + Den
768 sq. ft.
Terrace 63 sq. ft.



All dimensions approximate and all dimensions shown reflect the actual depth of the walls. Unless an additional feature, fixture, cabinet and equipment is specified to design and construct, it is not. The dimensions shown on this plan are approximate only. The actual dimensions may vary slightly from those shown on this plan. All dimensions shown are for the interior of the unit. The actual dimensions may vary slightly from those shown on this plan. All dimensions shown are for the interior of the unit. The actual dimensions may vary slightly from those shown on this plan. All dimensions shown are for the interior of the unit. The actual dimensions may vary slightly from those shown on this plan.



Loft 601
 1 Bedroom + Den
 768 sq. ft.
 Balcony 83 sq. ft.

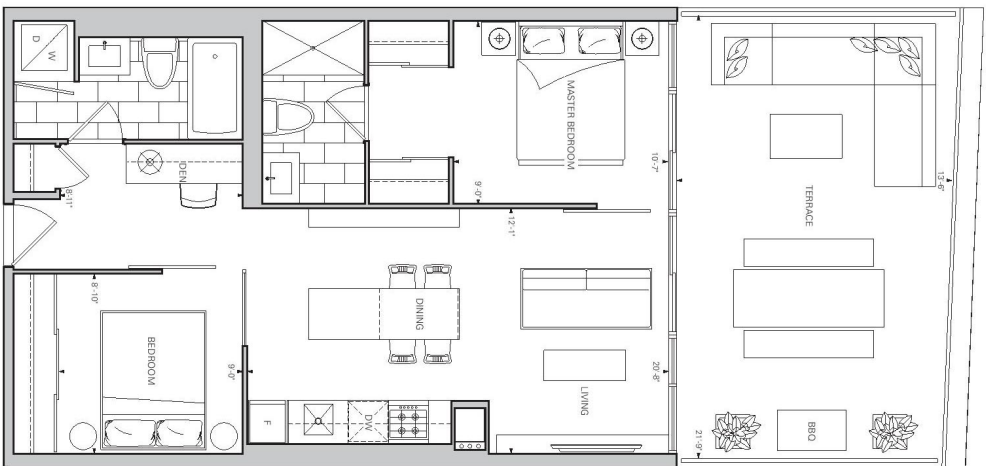


Kaplan Floor 6

All dimensions approximate and do not necessarily reflect the actual dimensions of the space. Unless specifically indicated otherwise, fixtures, finishes, and equipment are subject to change without notice. © 2017 The Apartment Group or its affiliates. All rights reserved.

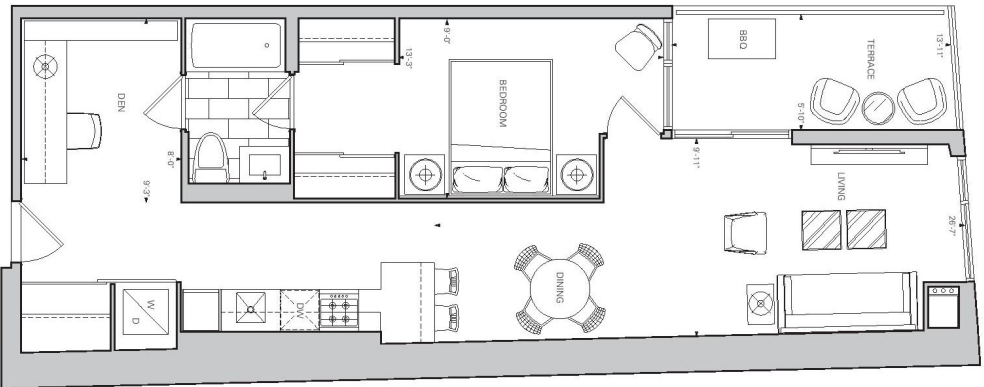
Loft 402

2 Bedroom + Den
 730 sq.ft.
 Terrace 299 sq.ft.



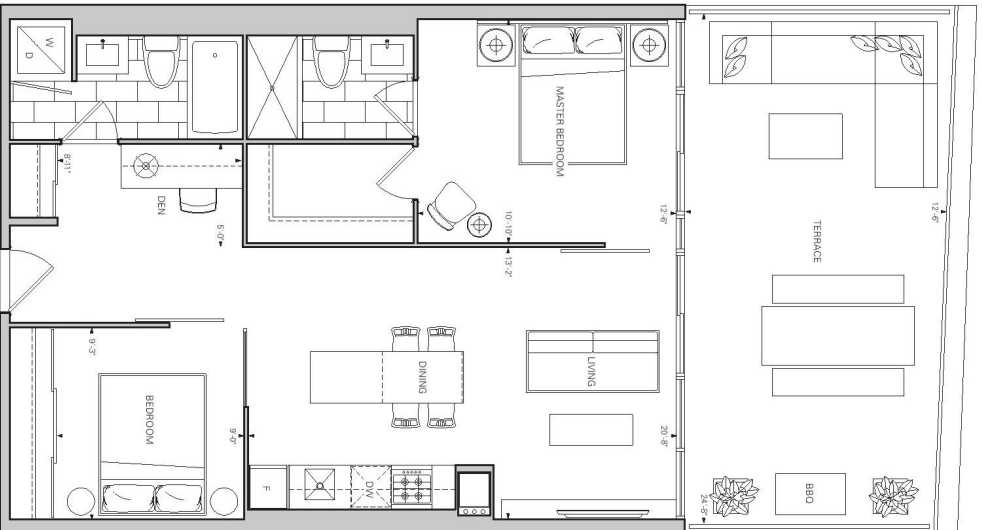
Loft 310

1 Bedroom + Den
792 sq.ft.
Terrace 85 sq.ft.



Keyplan Floor 3

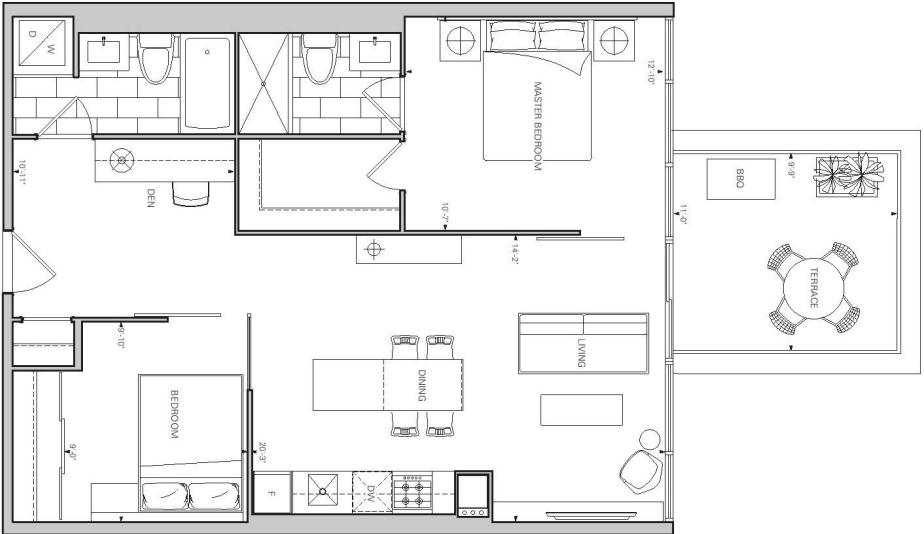
All dimensions approximate and do not necessarily reflect the actual layout of the unit. Unless an architect/contractor, builder, client and specialist team report to design and construct, L.L.C. The dimensions shown on this plan are approximate and do not necessarily reflect the actual layout of the unit. The dimensions shown on this plan are approximate and do not necessarily reflect the actual layout of the unit. The dimensions shown on this plan are approximate and do not necessarily reflect the actual layout of the unit.



All dimensions are approximate and do not necessarily reflect the actual dimensions of the space. Certain un-sold or unleased features, fixtures, cabinetry and appliances, subject to change without notice, are shown. The dimensions shown in this plan are approximate only. The floor plan is subject to change and should not be used as a construction document. All dimensions are approximate.

Loft 403
 2 Bedroom + Den
 821 sq. ft.
 Terrace 315 sq. ft.





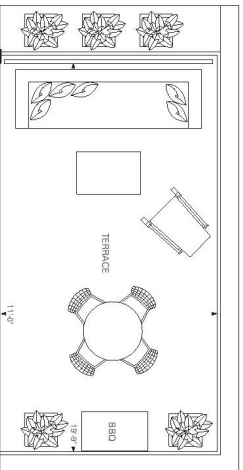
Loft 506

2 Bedroom + Den
 845 sq.ft.
 Terrace on 5th 112 sq.ft.
 Balcony on 6th 71 sq.ft.



Kryllan Floor 5/6

Not to scale. Design drawings are based on the information provided by the client. All dimensions are approximate and subject to change without notice. All dimensions are in feet and inches. The dimensions shown in this drawing are approximate and do not include the thickness of the walls. The dimensions shown in this drawing are approximate and do not include the thickness of the walls. The dimensions shown in this drawing are approximate and do not include the thickness of the walls.



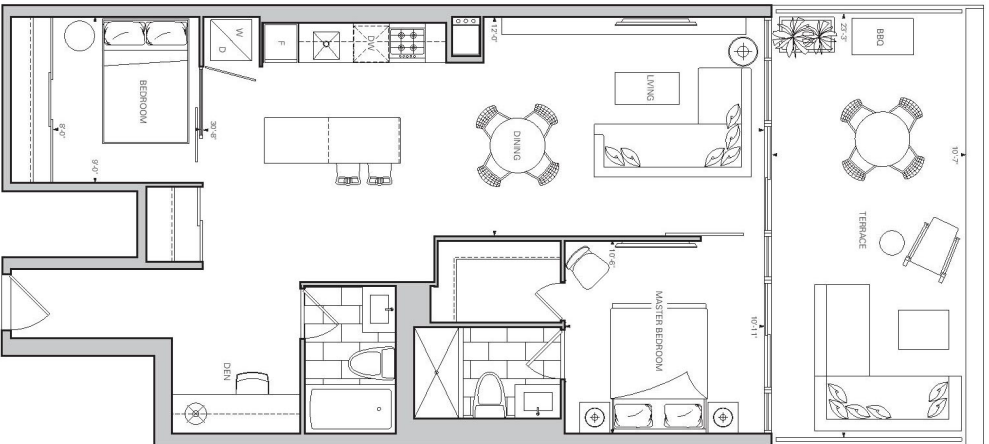
Loft 507 607

2 Bedroom + Den
895 sq.ft.
Terrace on 5th 230 sq.ft.
Balcony on 6th 130 sq.ft.



Keyplan Floor 5-6

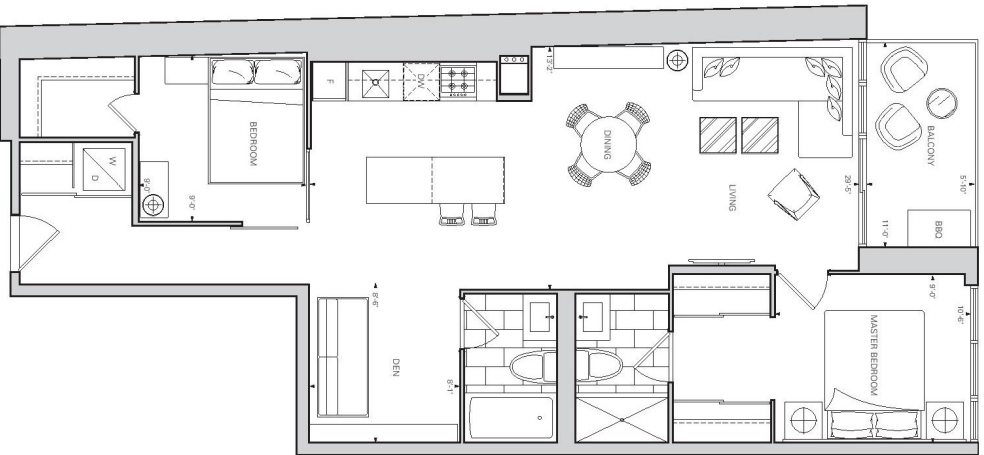
Always check drawings with your Local Sales Representative for details. Subject to architectural changes. Builders cannot be held responsible for design and construction. L.S.D. The dimensions shown in this floor plan are approximate only. Builders shall have the right to modify the floor plan without notice or obligation on the part of the purchaser and the purchaser shall be deemed to have accepted the modifications. For more information on this project, please contact the sales representative at the address above. © 2014 L.S.D. All rights reserved.



Loft 612
 2 Bedroom + Den
 920 sq.ft.
 Terrace 248 sq.ft.



All dimensions approximate and do not necessarily reflect the actual dimensions of the space. Unless we indicate otherwise, features, fixtures, and appliances are subject to change without notice. © 2012 The Apartment Group or its affiliates. All rights reserved. The floor plan is for informational purposes only and does not constitute an offer of real estate. Please contact your real estate agent for more information. The floor plan is for informational purposes only and does not constitute an offer of real estate. Please contact your real estate agent for more information.



Loft 608
 2 Bedroom + Den
 1024 sq. ft.
 Balcony 67 sq. ft.

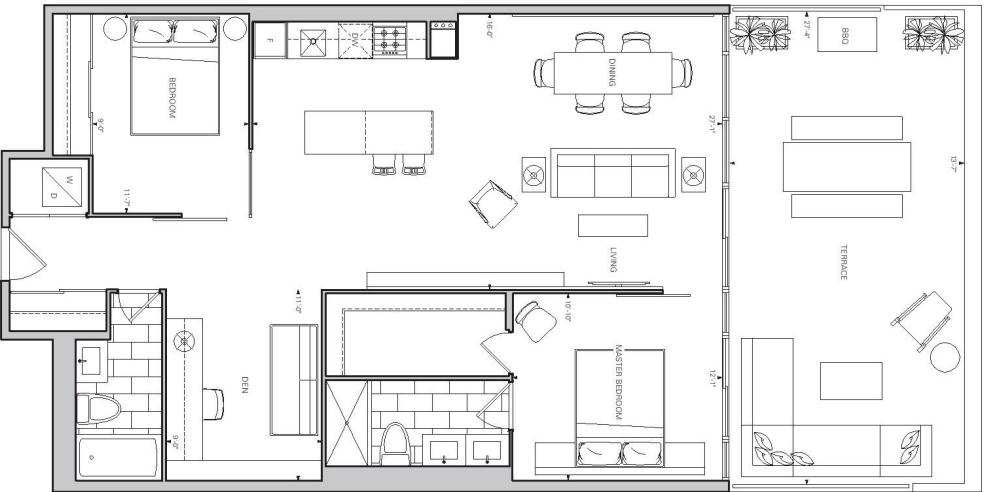


Keypian Floor 6

All dimensions approximate and do not necessarily reflect the actual layout of the space. Unless an architectural feature, fixture, cabinet and appliance is specifically identified as being included in the unit, it is not included. The dimensions shown on this plan are for informational purposes only and do not constitute an offer. The actual floor plan, layout and dimensions of the unit may vary. The dimensions shown on this plan are for informational purposes only and do not constitute an offer. The actual floor plan, layout and dimensions of the unit may vary.

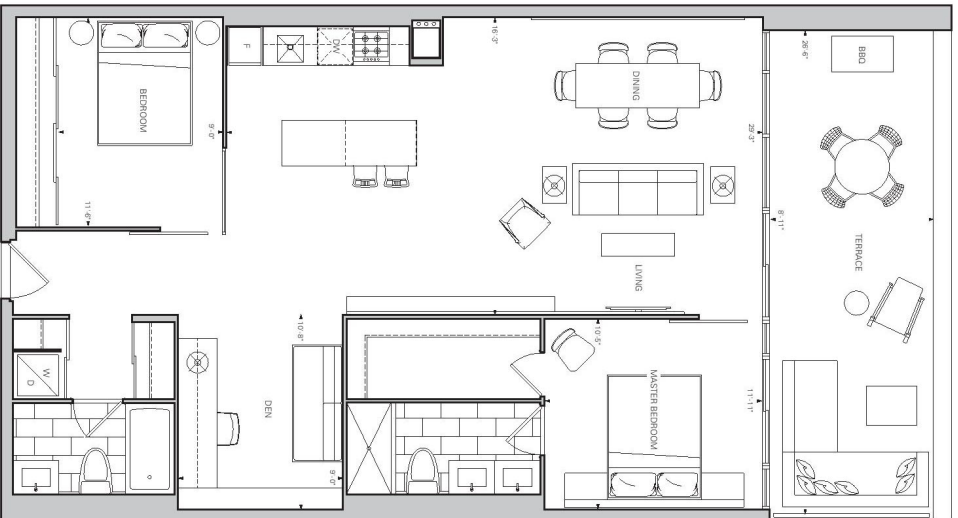
Loft 611

2 Bedroom + Den
1112 sq.ft.
Terrace 374 sq.ft.



Keypin Floor 6

All dimensions approximate and do not necessarily reflect actual field or site work. Units are sold as-is. All dimensions are subject to change without notice. © 2024 The Apartment Group or its affiliates. All rights reserved. The Apartment Group is not responsible for any errors or omissions in this document. The Apartment Group is not responsible for any errors or omissions in this document. The Apartment Group is not responsible for any errors or omissions in this document.



Loft 609
 2 Bedroom + Den
 1160 sq.ft.
 Terrace 238 sq.ft.



Koplan Floor 6

All dimensions are approximate and do not necessarily reflect the actual layout of the space. Certain unadorned features, including, but not limited to, appliances, lighting, and fixtures, subject to change without notice. © 2023 The Apartment Group or its affiliates. All rights reserved. The floor plan is for informational purposes only and does not constitute an offer. The actual floor plan may vary from the information shown here. For more information, please contact the leasing office.