

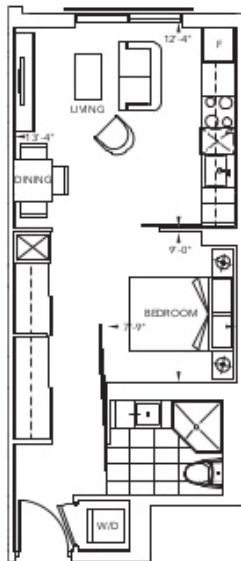


Representative view from 12" floor level, not to scale



Typical Floorplan

## Loft 1A



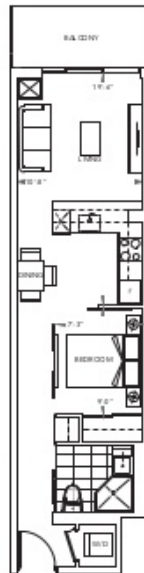
# Loft 1C



Image used for reference from 123Floor for listing 123.net



Typical Floorplan



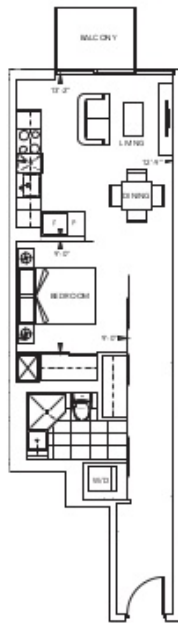


Proposed station location for the 10<sup>th</sup> Street Subway Station



Spiral Plaza

## Loft 1D





The perimeter above shows 10' x 11'3" floor for living 10E of



Special Floorplan

## Loft 1E

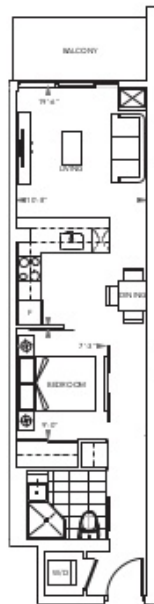




Image source: real estate from 123Floor for listing 123456



### Loft 1F



Architectural drawings are for informational purposes only and do not constitute an offer. Please contact your agent for more information. This information is subject to change without notice. 2023.07.20.2023

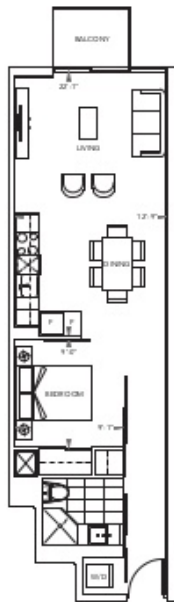


Experience the view from a floor 11.2' floor. See the full view from 11.2'.



Typical Floorplan

## Loft 1H

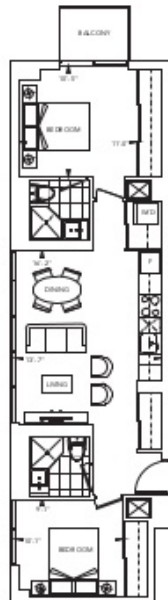




Representative view from 10' x 10' view from the 10' x 10' view



## Loft 2A





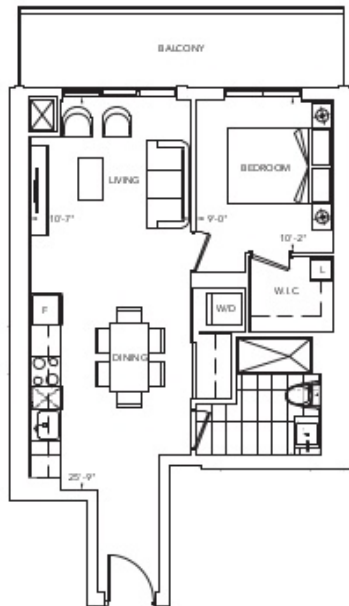
Representative view from 42nd floor looking North West



Typical Floorplan



## Suite 1A



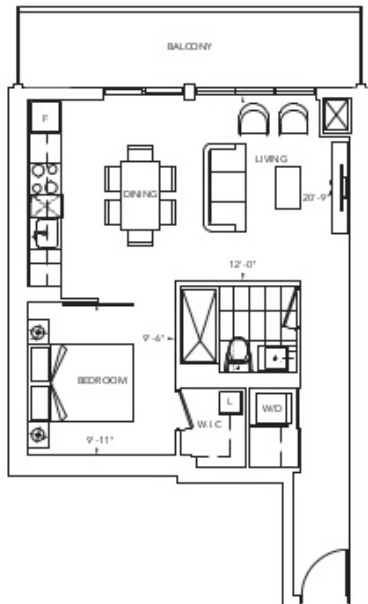




Re-presented view taken from 20' floor to only view of 18' or



## Suite 1B

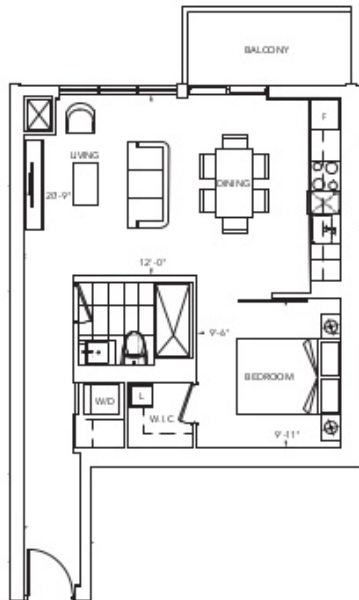




Representative view from 20' high looking SW at



## Suite 1C



## Suite 1D



No personation views from 10' floor level up to 10' and



Typical Floorplan



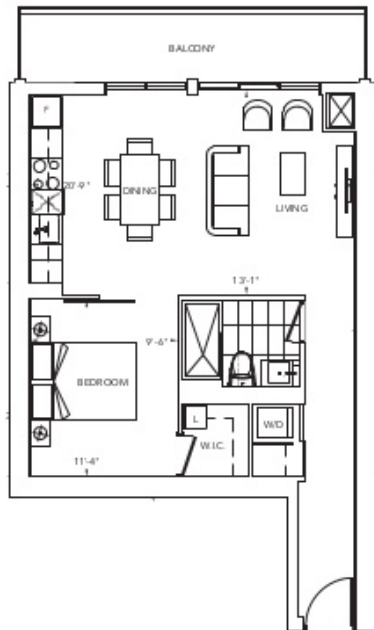


Represent the view from a front of 2" floor beam grid with 3/4"



Typical Floorplan

## Suite 1E





Representation taken from 3D flyover for listing No. 6, 10/14



## Suite 1F+D





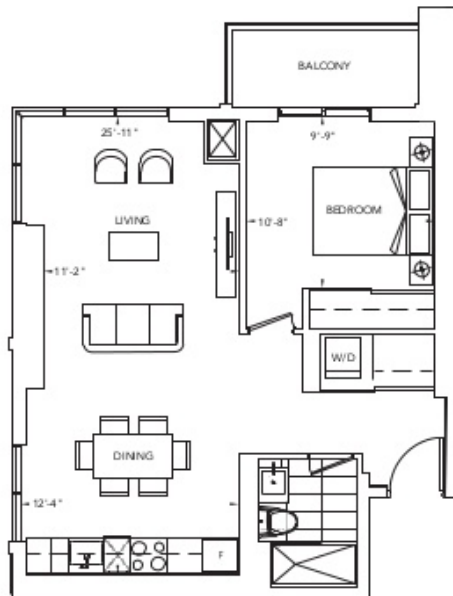
Representative view from 20' floor level of this unit



Typical Floorplan



## Suite 1G



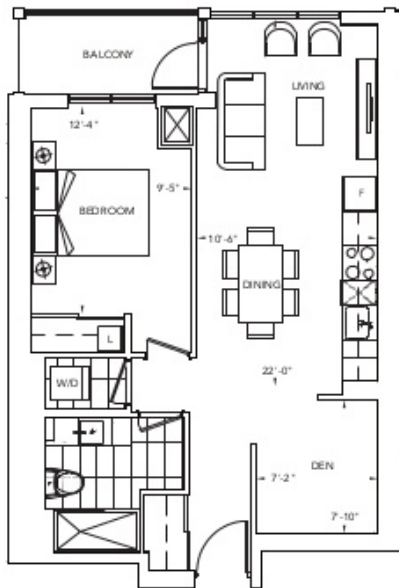


Representation view from 20' ft air level plus 6 ft dia



Typical Floorplan

### Suite 1H+D



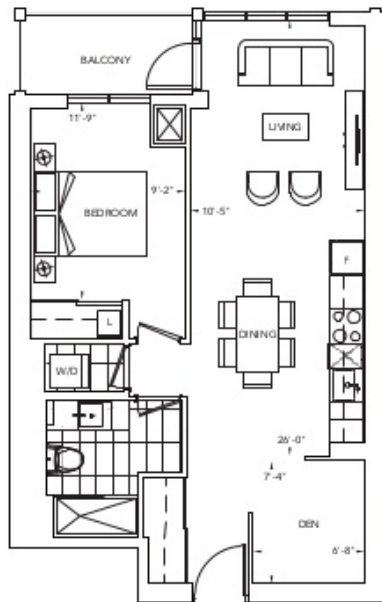
## Suite 1J+D



Represents the view from a height of 2' above the floor of the unit.



Typical Floorplan



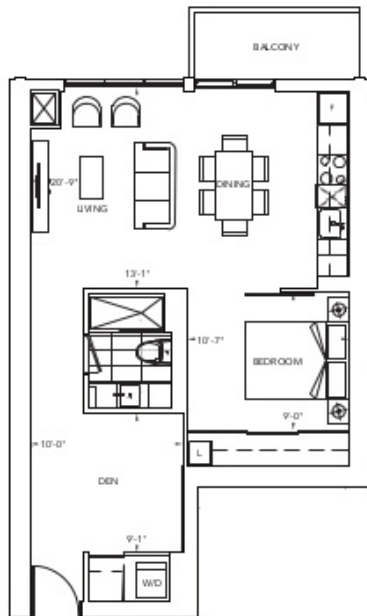




Represent the view from a front of 2' from the floor of the unit



### Suite 1K+D

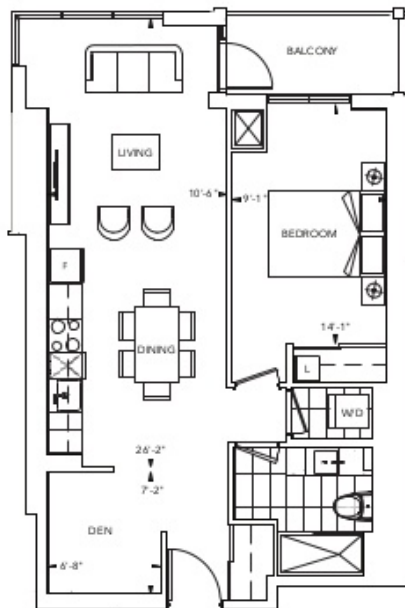




Represent the floor area as shown on 2-D floor plan. Do not include the area



### Suite 1L+D





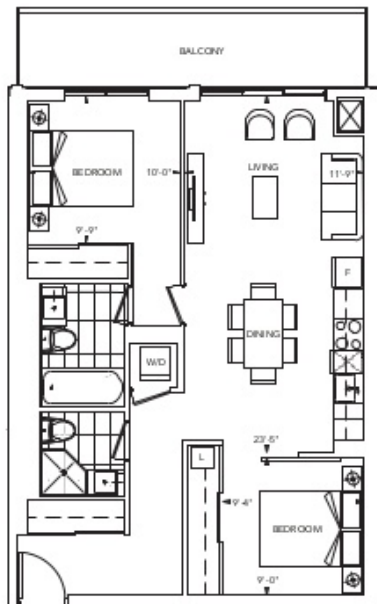
No representation is made from this 3D image being a gift or to be given



Typical Floorplan



## Suite 2A



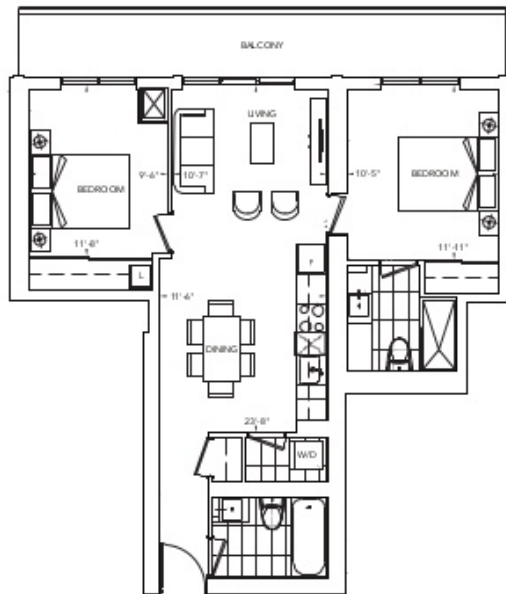
# Suite 2B



View from the suite on a second 27° floor. Suite 2B is circled in red.



Typical Floorplan



Model and floor plan are for illustrative purposes only. Dimensions are approximate. Please refer to the actual floor plan for more details. © 2018, City of Dallas

## Suite 2C+D



Representative view from 2C+D East facing South-West



Typical Floorplan



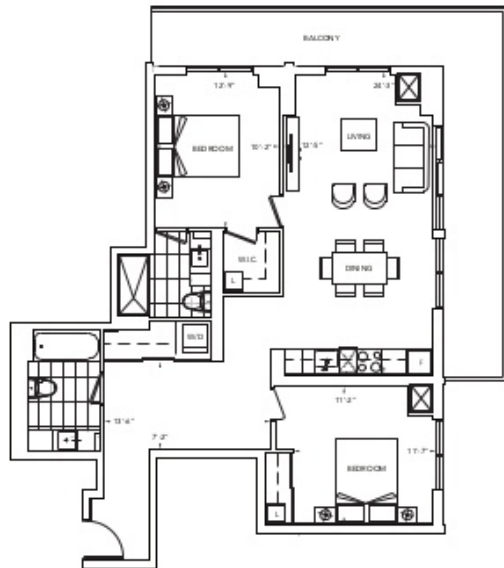
## Suite 2D+D



View from the suite on a floor of 27' floor level, facing south to east



Typical Floorplan





View from station view from 42nd Street facing north to 63rd



## Suite 2E



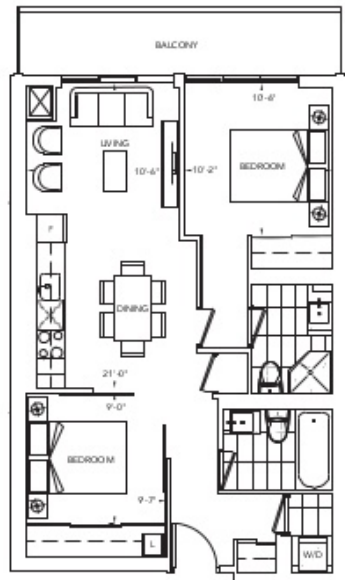
## Suite 2F



View from the suite is a view of 21° from the floor level with 21°



Typical Floorplan





Suite 2G



Representative view from 22nd Floor to city. Not to scale.



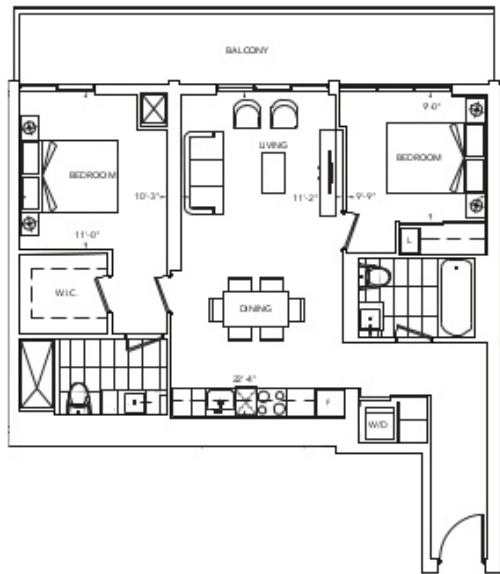
## Suite 2H



Representative view from 2H's view to Long Neck Blvd



Typical Floorplan



Minimum down payment is 10% of the purchase price. Please see our website for more information. This is not a contract. See our website for more information. 2023.07.10.2023

## Suite 2J



Representative view from 12' x 11' view to city view @ 10' x 10'



Typical Floorplan



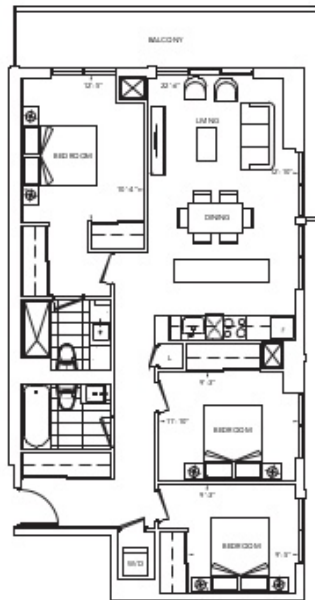
# Suite 3A



Re presentation view from 0573 view to only the 05 08 02



Typical Floorplan





Approximate view from 1000 sq ft floor plan shown



### Suite 3B

