



EXCHANGE

FLOOR PLANS



EXCHANGE

- BACHELOR
- 1 BEDROOM
- 1 BEDROOM + DEN

- 2 BEDROOM + DEN
- 2 BEDROOM + FLEX

Floorplate indicates balcony design on 3/F, 6/F & 8/F

- 2/F balcony design
- 5/F, 7/F & 9/F balcony design

EXTERIOR FACADE DESIGN
2/F, 5/F & 7/F

EXTERIOR FACADE DESIGN
8/F & 9/F

11

12

15

01

02

03

EXTERIOR FACADE DESIGN
2/F, 5/F & 7/F

EXTERIOR FACADE DESIGN
8/F & 9/F



10

09

08

07

06

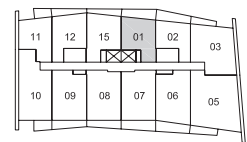
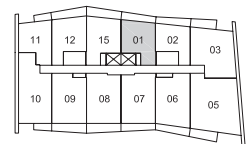
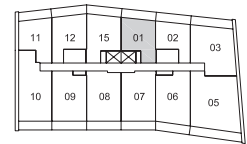
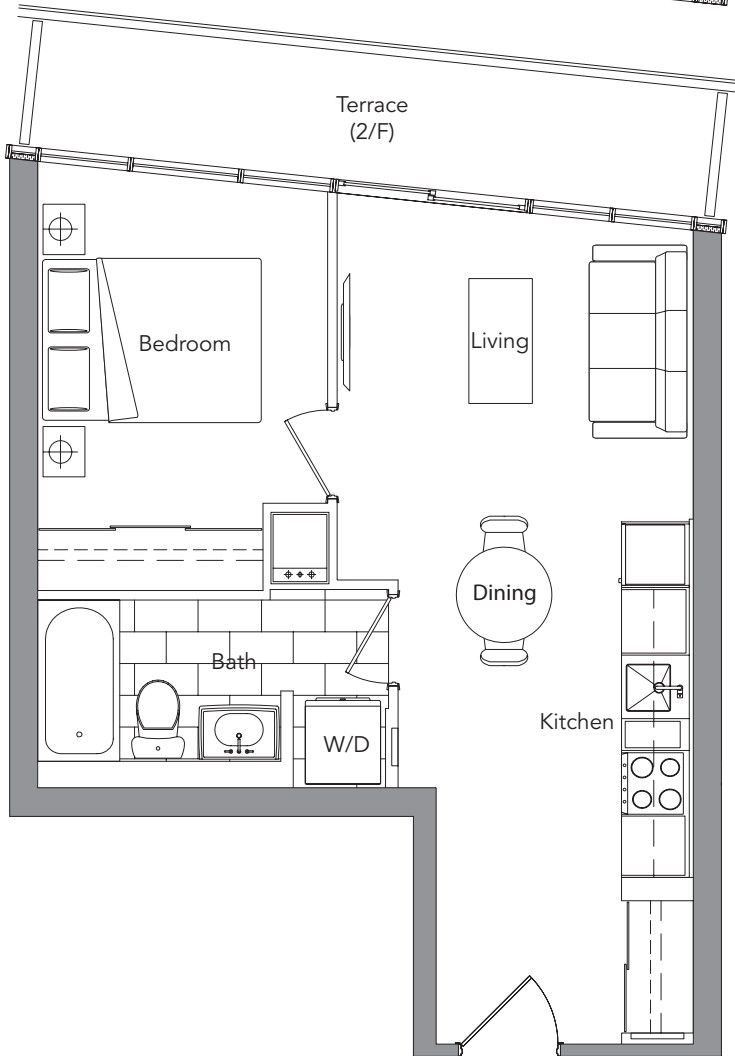
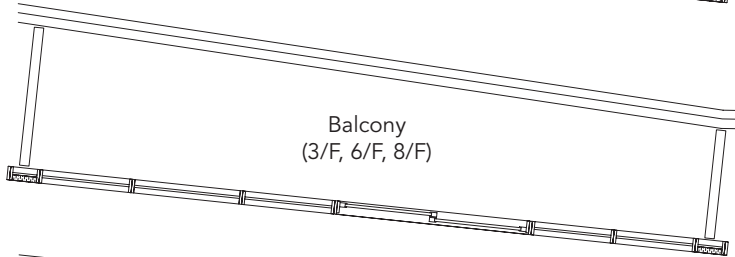
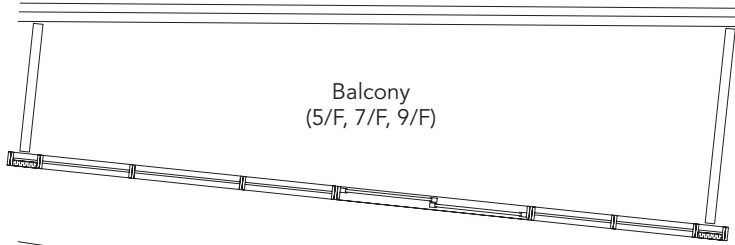
05

The developer reserves the right to make minor revisions to interior wall locations and exterior window system. All materials and drawings are approximate. Information is subject to change without notice. Actual square footages may vary from the stated floor plan. Furniture and upgrades shown on plans are for illustration purposes only and are not included. E. & O.E.

1 BEDROOM

01

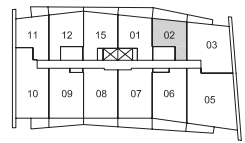
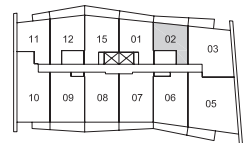
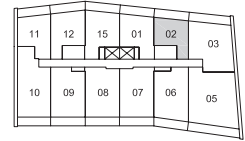
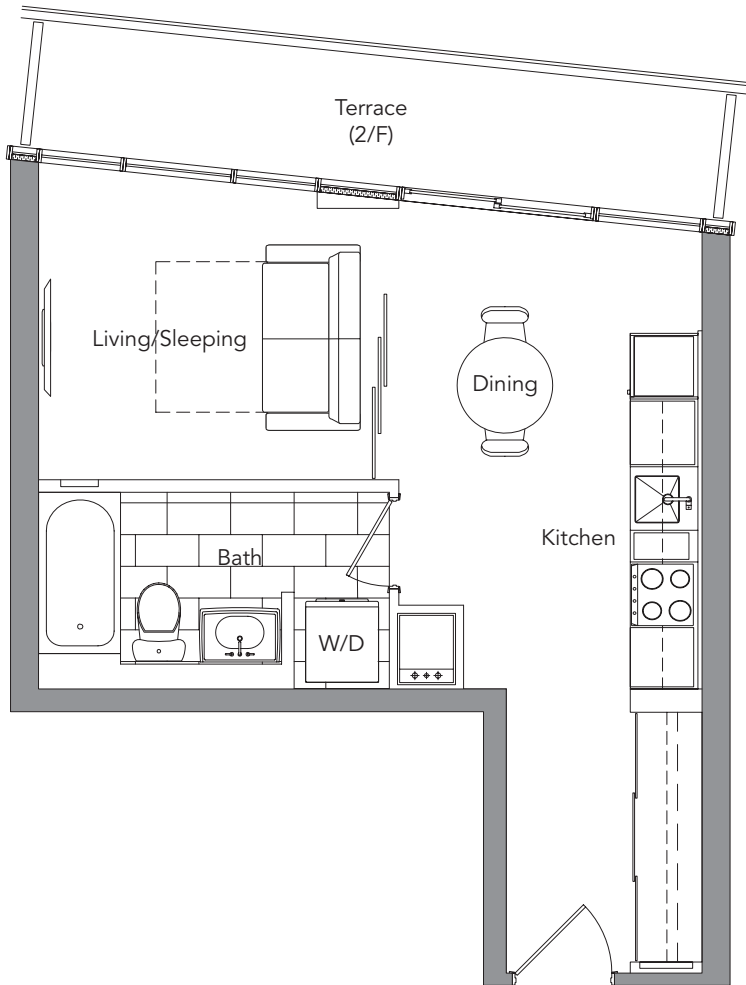
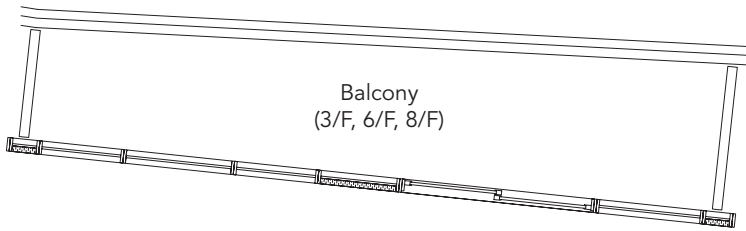
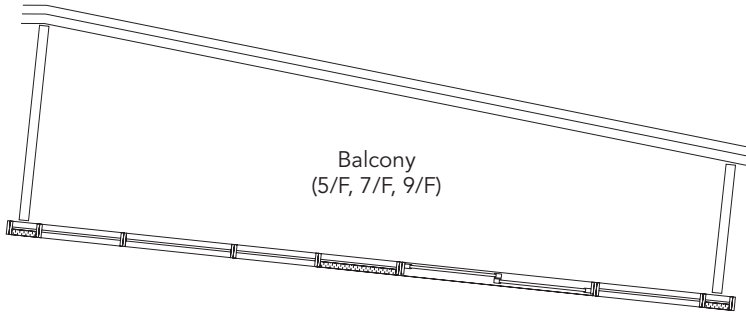
	2/F	3/F, 6/F, 8/F	5/F, 7/F, 9/F
Suite Area	490 s.f.	490 s.f.	490 s.f.
Terrace/Balcony Area	80 s.f.	83 s.f.	105 s.f.
Total Area	570 s.f.	573 s.f.	595 s.f.



BACHELOR

02

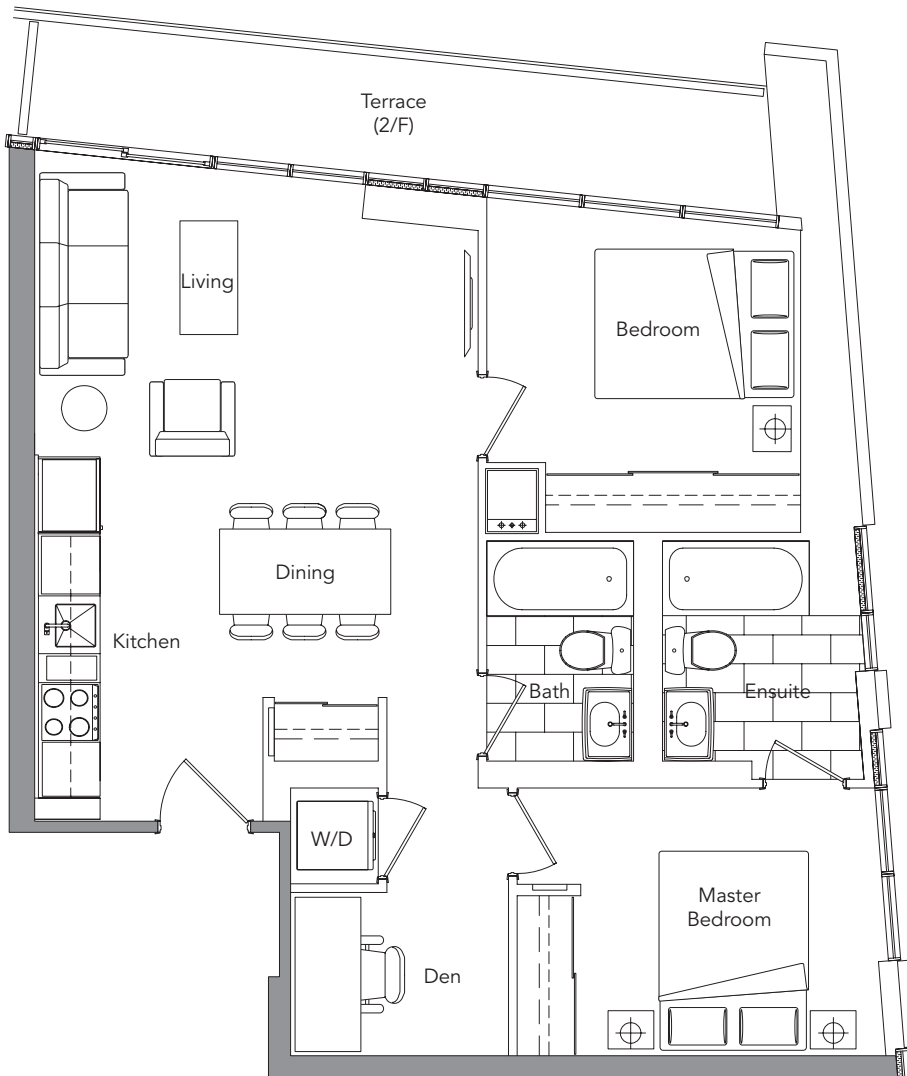
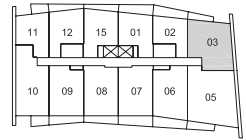
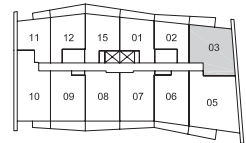
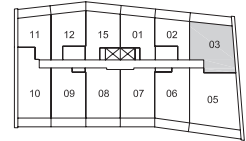
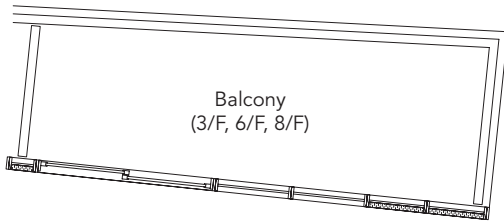
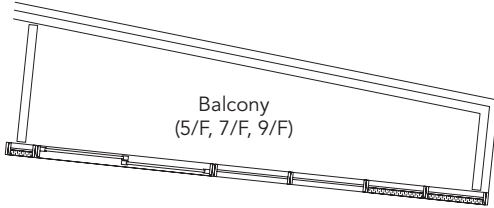
	2/F	3/F, 6/F, 8/F	5/F, 7/F, 9/F
Suite Area	415 s.f.	415 s.f.	415 s.f.
Terrace/Balcony Area	85 s.f.	86 s.f.	110 s.f.
Total Area	500 s.f.	501 s.f.	525 s.f.



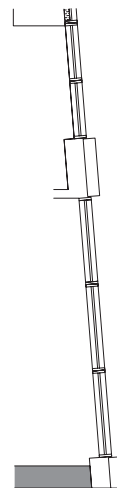
2 BEDROOM + DEN

03

	2/F	3/F, 6/F, 8/F	5/F, 7/F, 9/F
Suite Area	833 s.f.	833 s.f.	833 s.f.
Terrace/Balcony Area	100 s.f.	77 s.f.	52 s.f.
Total Area	933 s.f.	910 s.f.	885 s.f.



(3/F, 5/F, 8/F, 9/F)



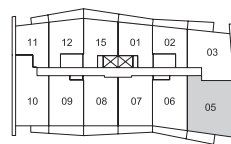
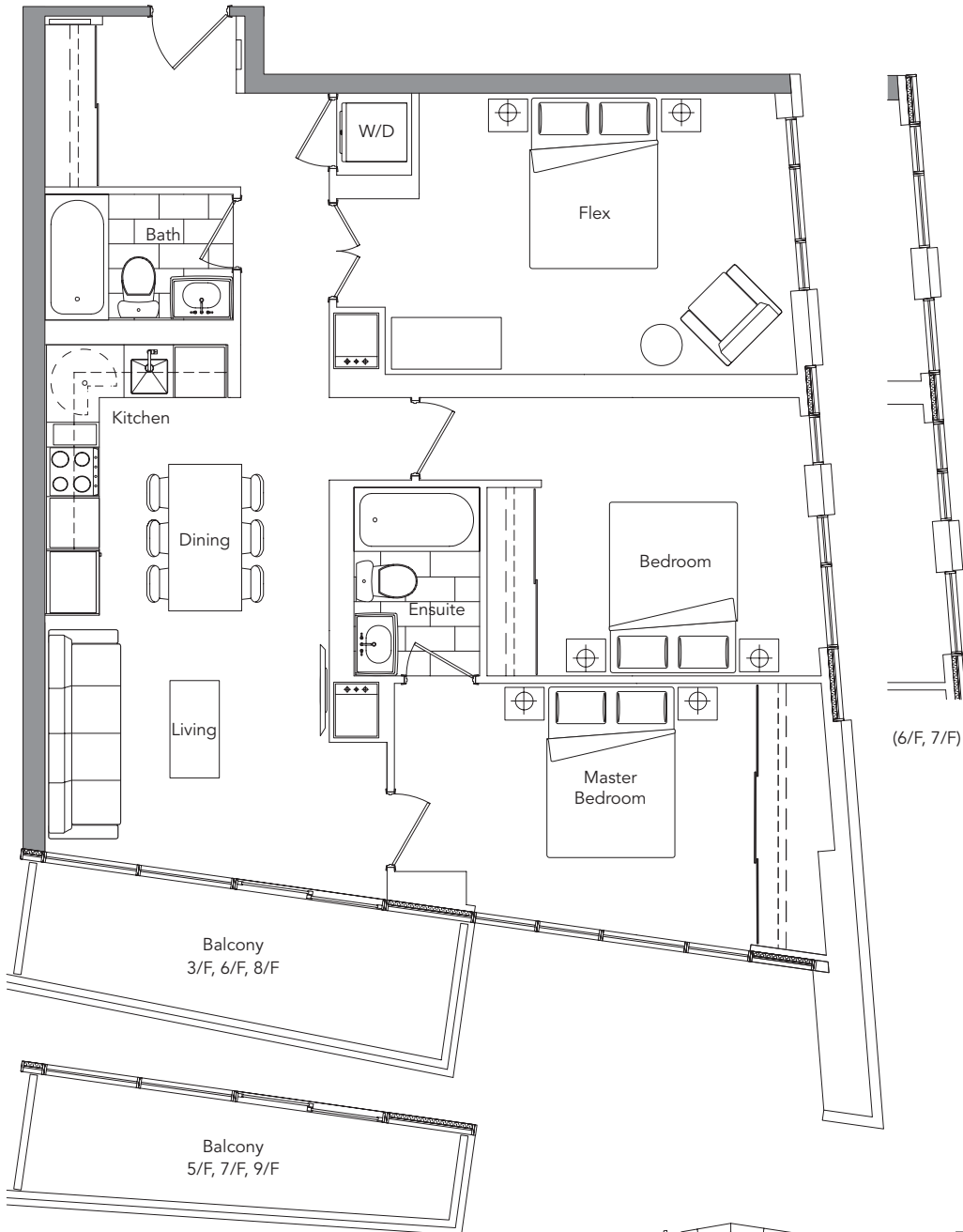
2 BEDROOM + FLEX

05

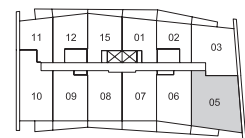
3/F, 6/F, 8/F

5/F, 7/F, 9/F

Suite Area	1103 s.f.	1103 s.f.
Terrace/Balcony Area	85 s.f.	70 s.f.
Total Area	1188 s.f.	1173 s.f.



3/F, 6/F, 8/F

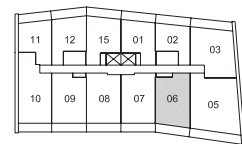
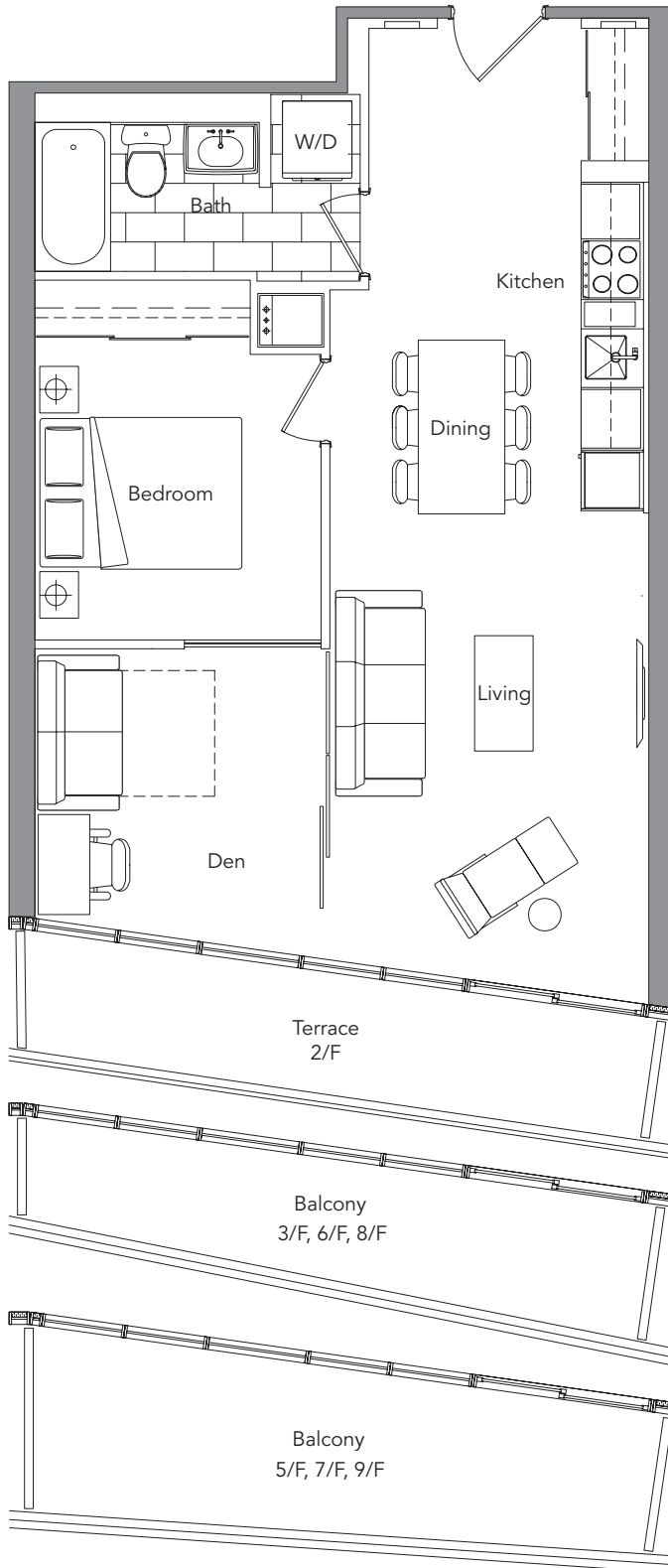


5/F, 7/F, 9/F

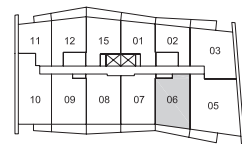
1 BEDROOM + DEN

06

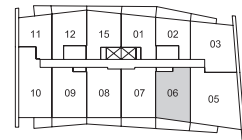
	2/F	3/F, 6/F, 8/F	5/F, 7/F, 9/F
Suite Area	675 s.f.	675 s.f.	675 s.f.
Terrace/Balcony Area	85 s.f.	85 s.f.	113 s.f.
Total Area	760 s.f.	760 s.f.	788 s.f.



2/F



3/F, 6/F, 8/F



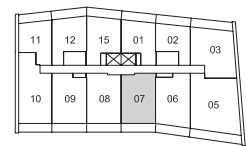
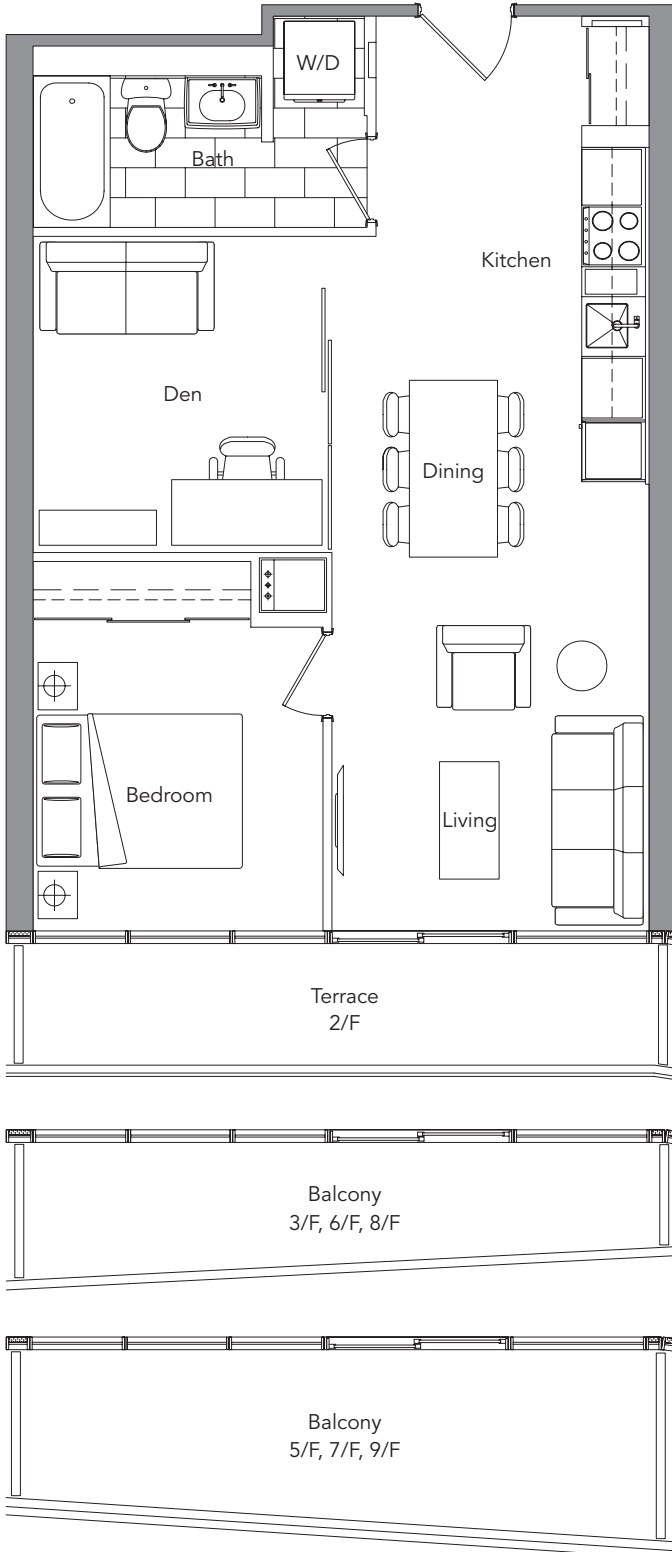
5/F, 7/F, 9/F



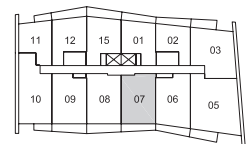
1 BEDROOM + DEN

07

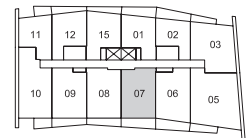
	2/F	3/F, 6/F, 8/F	5/F, 7/F, 9/F
Suite Area	655 s.f.	655 s.f.	655 s.f.
Terrace/Balcony Area	83 s.f.	83 s.f.	117 s.f.
Total Area	738 s.f.	738 s.f.	772 s.f.



2/F



3/F, 6/F, 8/F



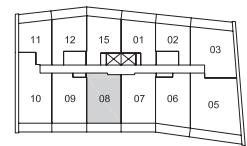
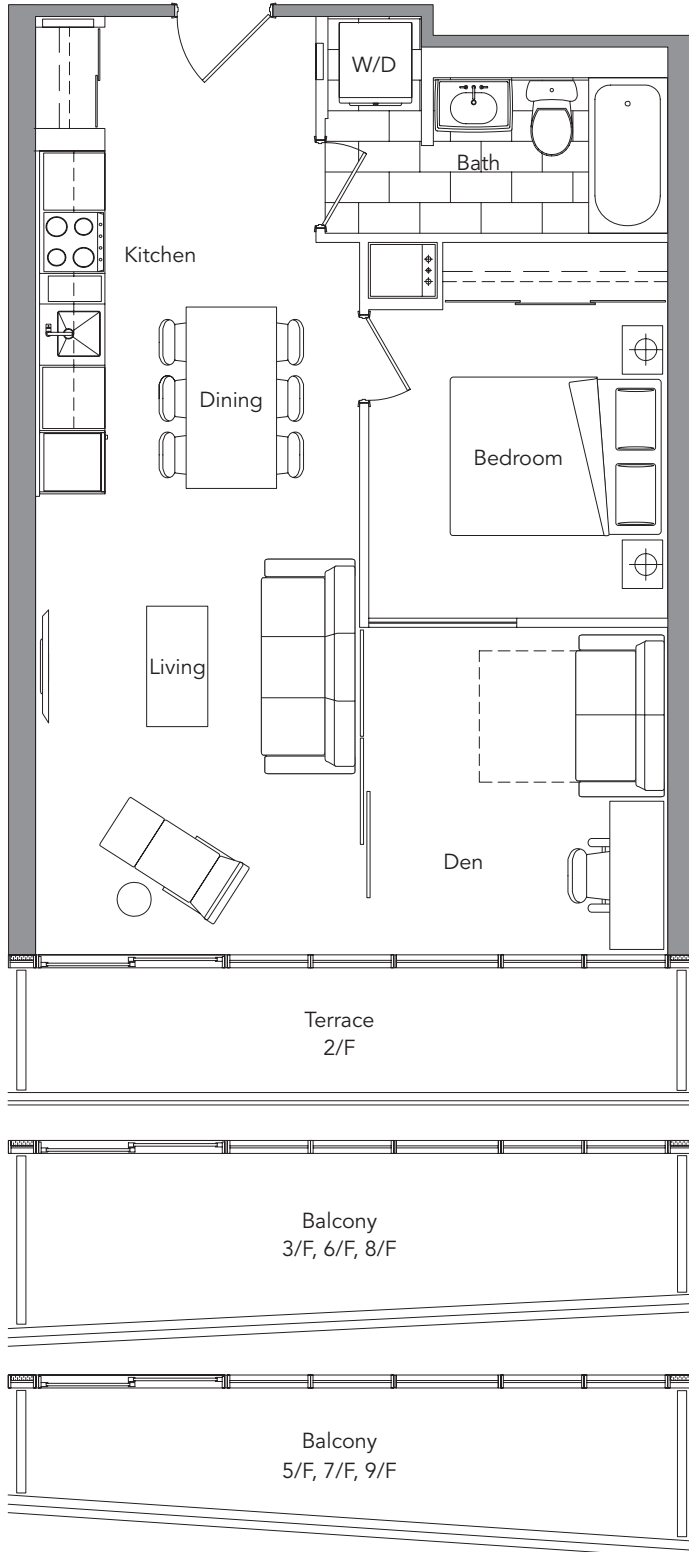
5/F, 7/F, 9/F



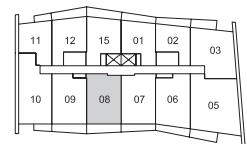
1 BEDROOM + DEN

08

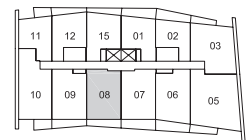
	2/F	3/F, 6/F, 8/F	5/F, 7/F, 9/F
Suite Area	655 s.f.	655 s.f.	655 s.f.
Terrace/Balcony Area	83 s.f.	106 s.f.	85 s.f.
Total Area	738 s.f.	761 s.f.	740 s.f.



2/F



3/F, 6/F, 8/F



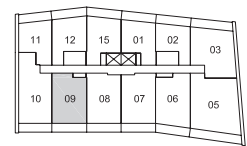
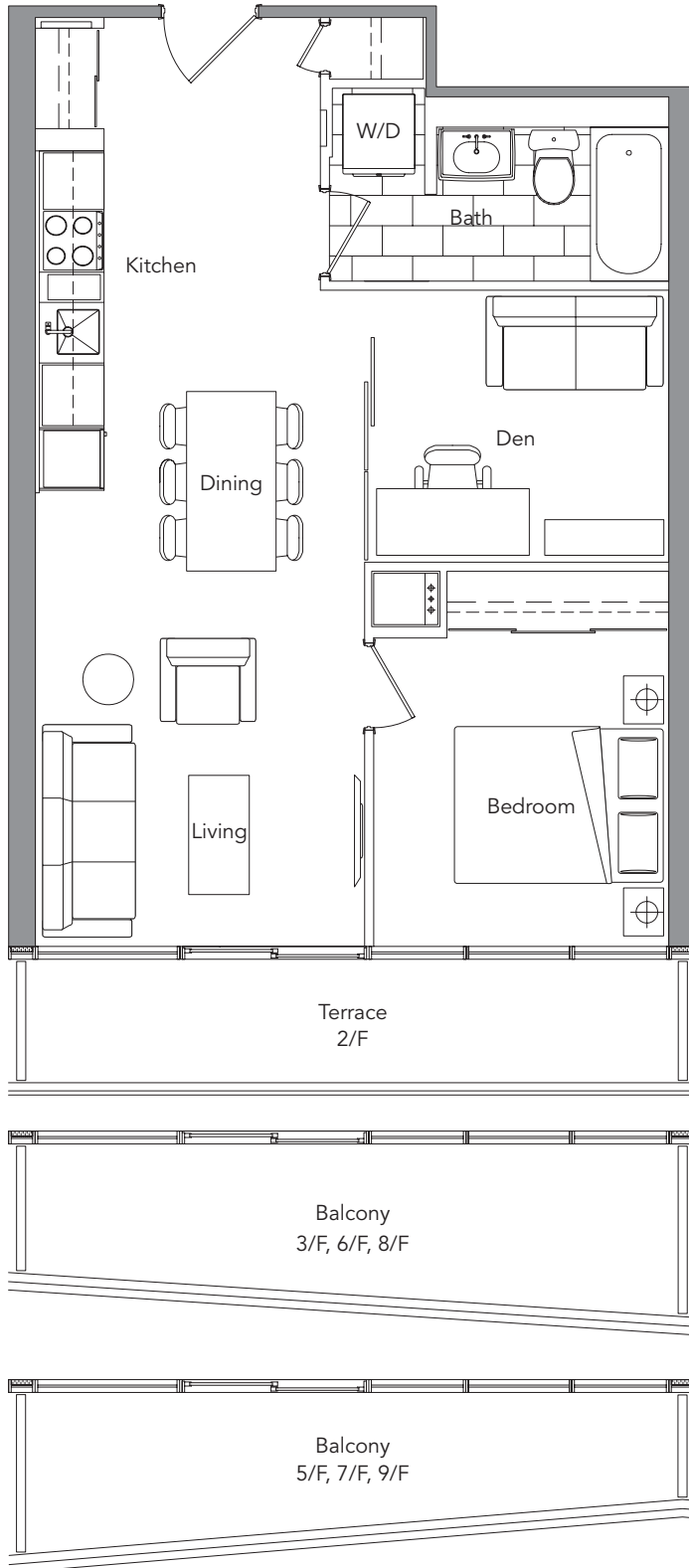
5/F, 7/F, 9/F



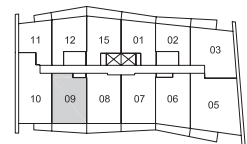
1 BEDROOM + DEN

09

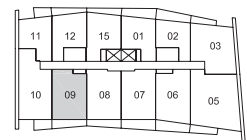
	2/F	3/F, 6/F, 8/F	5/F, 7/F, 9/F
Suite Area	645 s.f.	645 s.f.	645 s.f.
Terrace/Balcony Area	85 s.f.	103 s.f.	93 s.f.
Total Area	730 s.f.	748 s.f.	738 s.f.



2/F



3/F, 6/F, 8/F



5/F, 7/F, 9/F



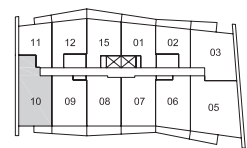
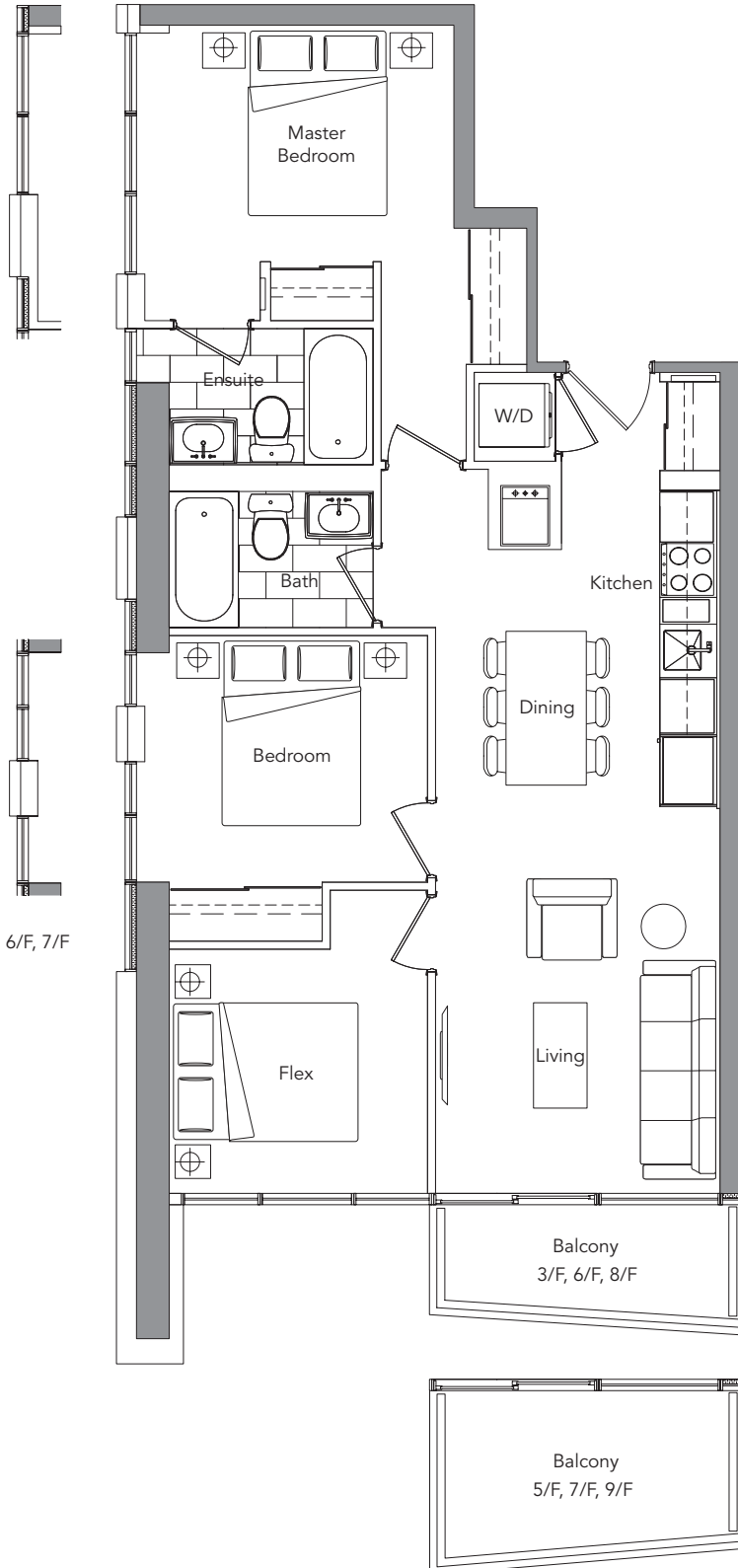
2 BEDROOM + FLEX

10

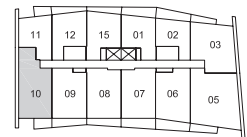
3/F, 6/F, 8/F

5/F, 7/F, 9/F

Suite Area	898 s.f.	898 s.f.
Terrace/Balcony Area	40 s.f.	57 s.f.
Total Area	938 s.f.	955 s.f.



3/F, 6/F, 8/F



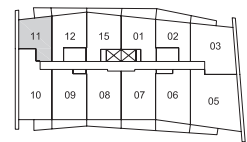
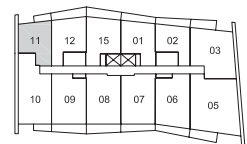
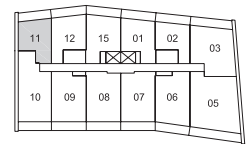
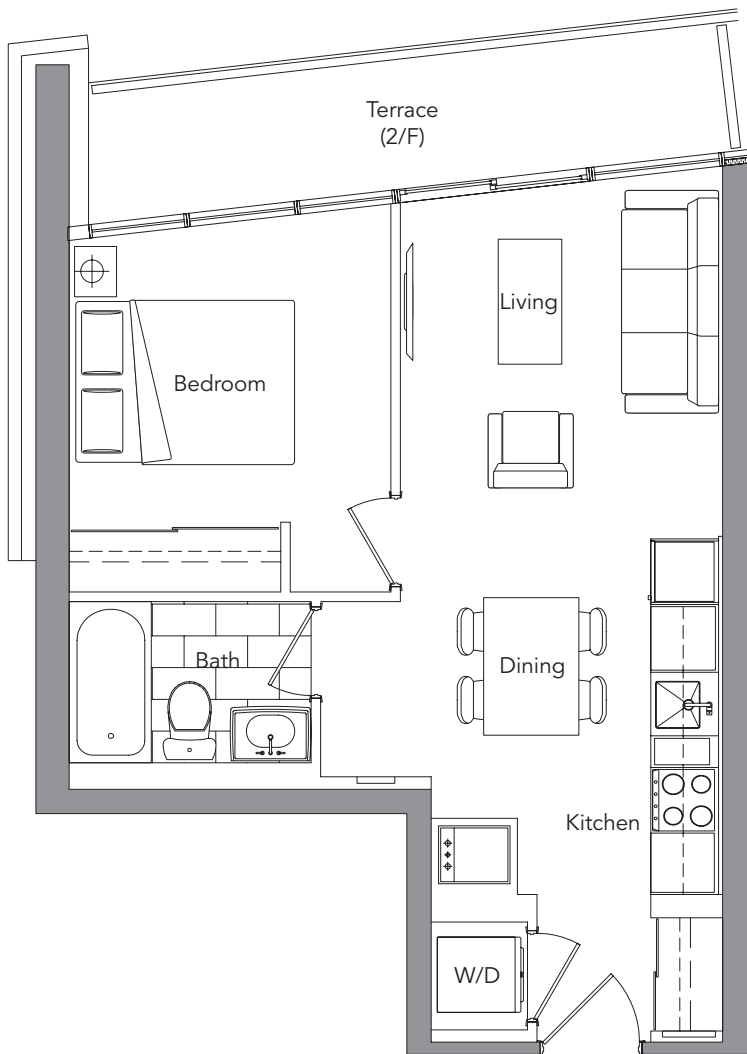
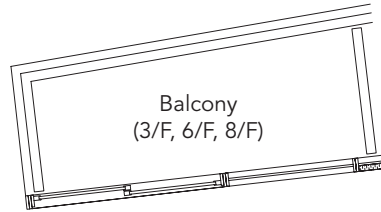
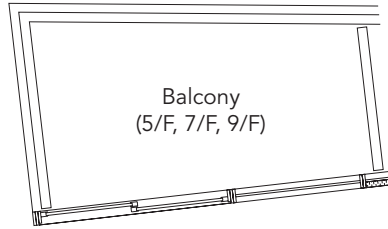
5/F, 7/F, 9/F



1 BEDROOM

11

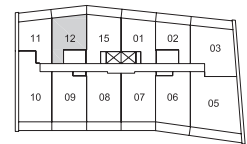
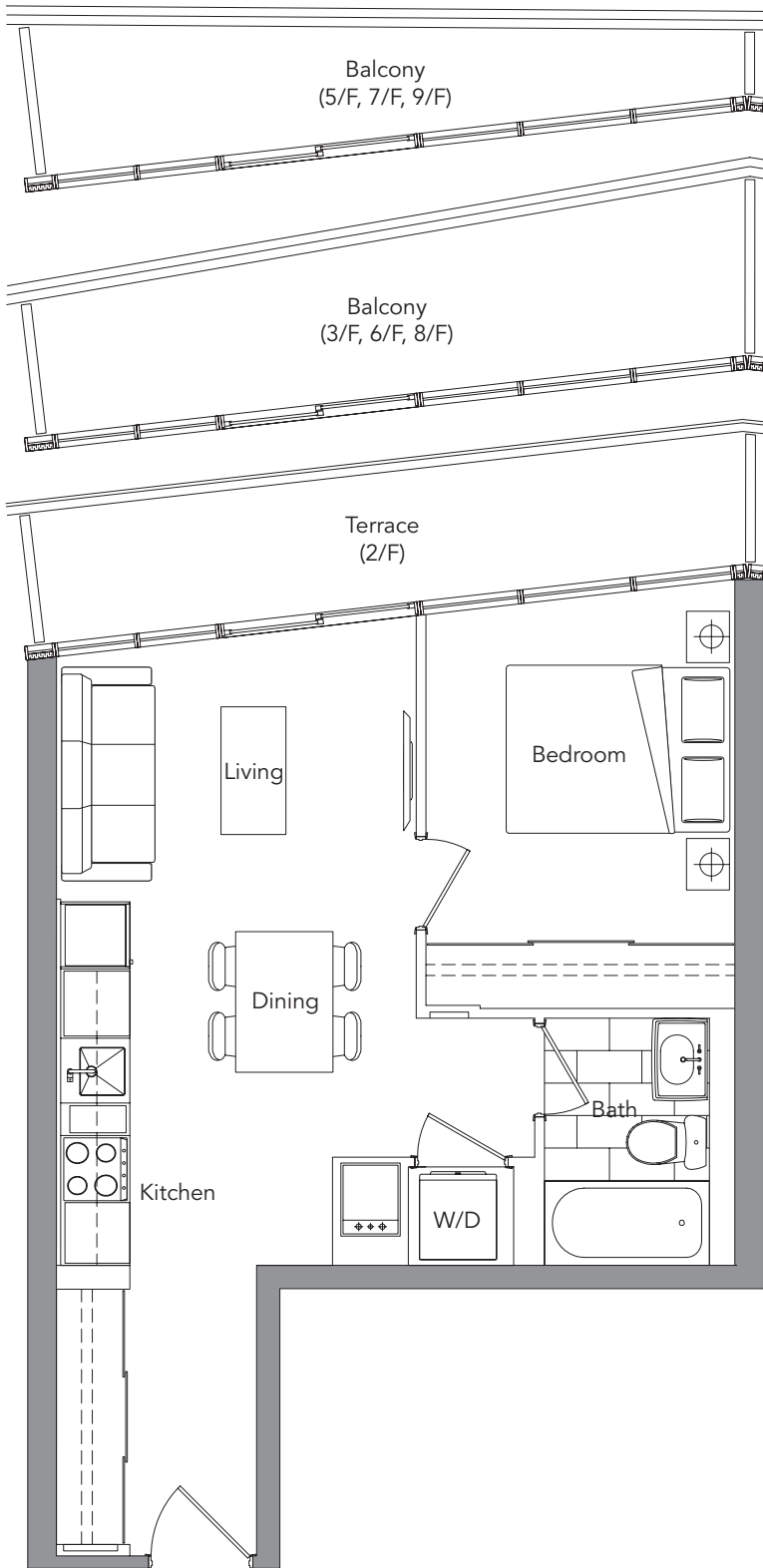
	2/F	3/F, 6/F, 8/F	5/F, 7/F, 9/F
Suite Area	520 s.f.	520 s.f.	520 s.f.
Terrace/Balcony Area	75 s.f.	35 s.f.	50 s.f.
Total Area	595 s.f.	555 s.f.	570 s.f.



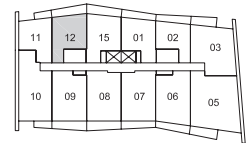
1 BEDROOM

12

	2/F	3/F, 6/F, 8/F	5/F, 7/F, 9/F
Suite Area	507 s.f.	507 s.f.	507 s.f.
Terrace/Balcony Area	83 s.f.	101 s.f.	68 s.f.
Total Area	590 s.f.	608 s.f.	575 s.f.



2/F



3/F, 6/F, 8/F



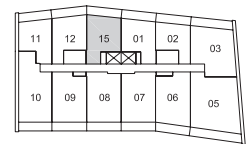
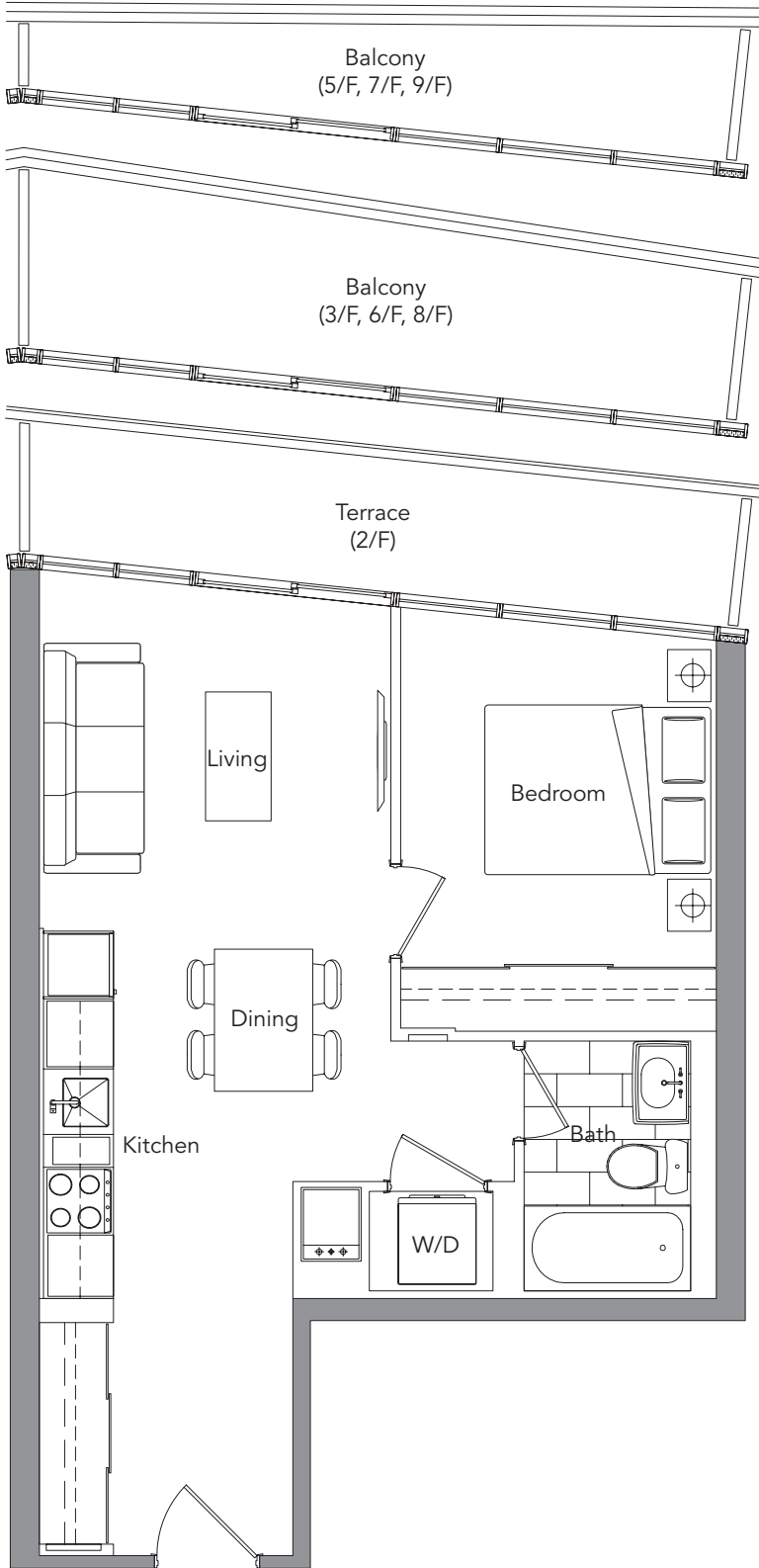
5/F, 7/F, 9/F



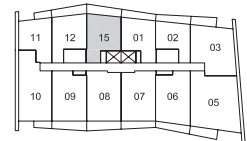
1 BEDROOM

15

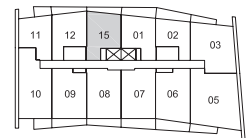
	2/F	3/F, 6/F, 8/F	5/F, 7/F, 9/F
Suite Area	533 s.f.	533 s.f.	533 s.f.
Terrace/Balcony Area	85 s.f.	105 s.f.	62 s.f.
Total Area	618 s.f.	638 s.f.	595 s.f.



2/F



3/F, 6/F, 8/F



5/F, 7/F, 9/F

