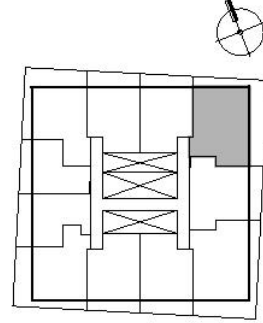


754 sq.ft. – 2 Bedroom

Balcony 300 sq.ft. | Total Living Area 1054 sq.ft.

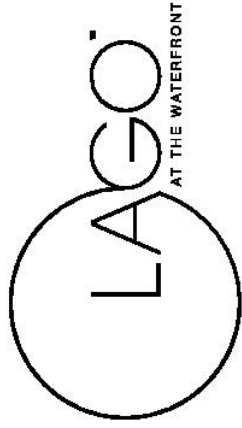


5th - 16th Floor

French Balcony on 5th floor.

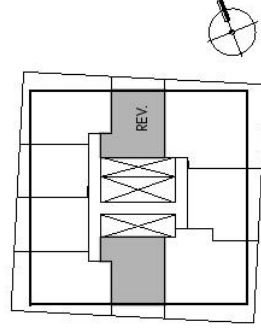
*Balcony locations, shapes, and sizes may vary. Please ask a sales representative for details.

This plan is not to scale and is subject to architectural review and revision, including without limitation, the Unit being constructed with a layout that is the reverse of that set out above. All materials, specifications, details and dimensions, if any, are approximate and subject to change without notice in order to comply with building site conditions and municipal, structural, Vendor and/or architectural requirements. Actual floor area may vary in accordance with Bulletin Z2 published by the Toron Warranty Corporation. Bulkheads are not shown on this plan and may be located in areas of the Unit as required to provide venting and mechanical systems. Balconies, Terraces and Patios if any are exclusive use common elements, shown for display purposes only and location and size are subject to change without notice. Window location, size and type may vary without notice. E.8.C.E



663 sq.ft. – 1 Bedroom + Den

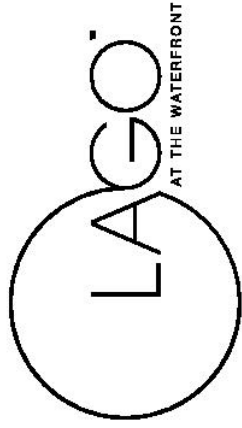
Balcony 105 sq.ft. | Total Living Area 768 sq.ft.



17th - 48th Floor

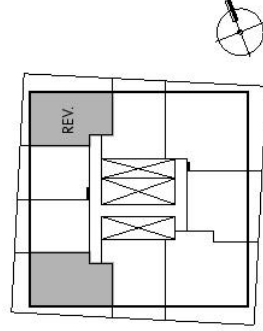
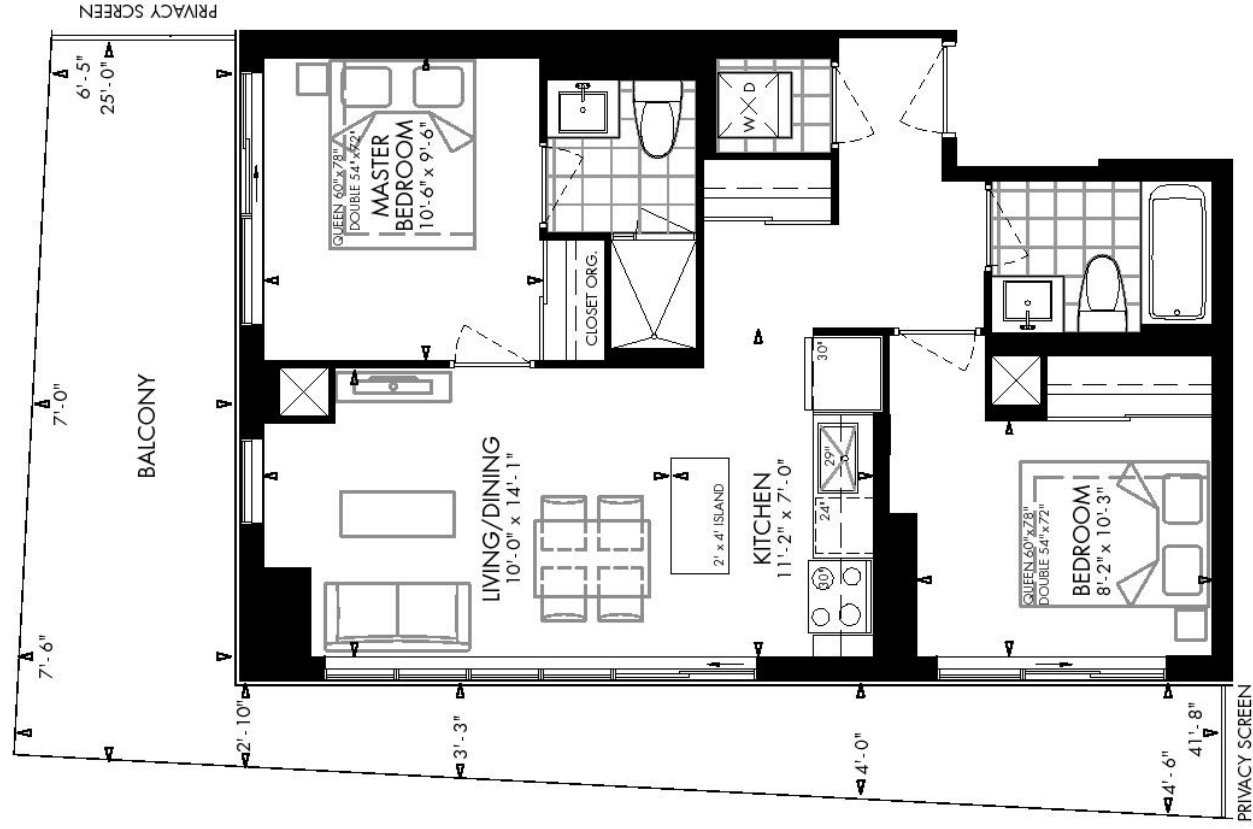
*Balcony locations, shapes, and sizes may vary.
Please ask a sales representative for details.

This plan is not to scale and is subject to architectural review and revision, including without limitation, the Unit being constructed with a layout that is the reverse of that set out above. All materials, specifications, details and dimensions, if any, are approximate and subject to change without notice in order to comply with building site conditions and municipal, structural, Vendor and/or architectural requirements. Actual floor area may vary in accordance with Bulletin 22 published by the Torion Warranty Corporation. Bulkheads are not shown on this plan and may be located in areas of the Unit as required to provide venting and mechanical systems. Balconies, Terraces and Patios if any are exclusive use common elements, shown for display purposes only and location and size are subject to change without notice. Window location, size and type may vary without notice. E.S.O.E.



715 sq.ft. – 2 Bedroom

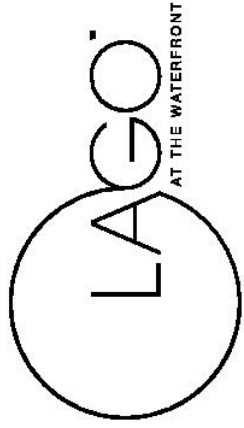
Balcony 295 sq.ft. | Total Living Area 1010 sq.ft.



17th - 48th Floor

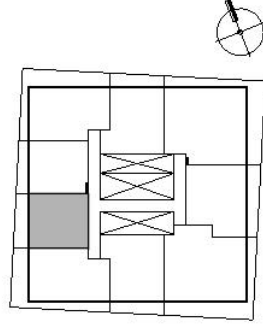
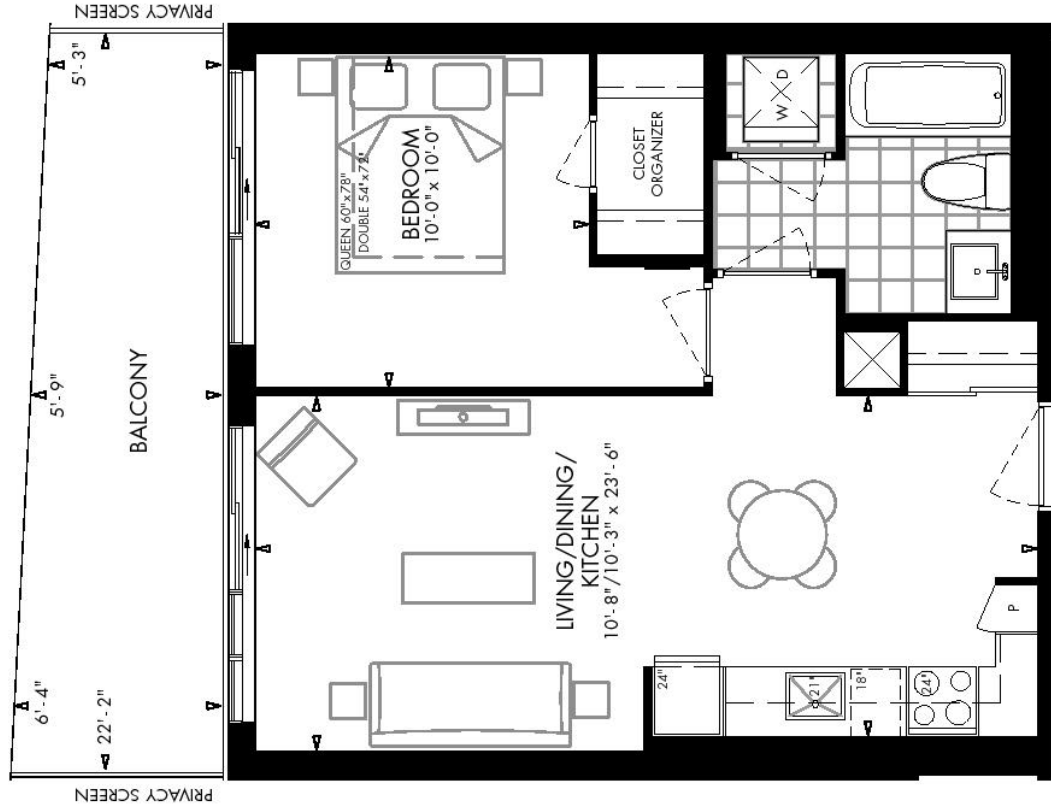
*Balcony locations, shapes, and sizes may vary.
Please ask a sales representative for details.

This plan is not to scale and is subject to architectural review and revision, including without limitation, the Unit being constructed with a layout that is the reverse of that set out above. All materials, specifications, details and dimensions, if any, are approximate and subject to change without notice in order to comply with building site conditions and municipal, structural, Vendor and/or architectural requirements. Actual floor area may vary in accordance with Bulletin 22 published by the Taron Warranty Corporation. Bulkheads are not shown on this plan and may be located in areas of the Unit as required to provide venting and mechanical systems. Balconies, Terraces and Patios if any are exclusive use common elements, shown for display purposes only and location and size are subject to change without notice. Window location, size and type may vary without notice. E.8.C.E



550 sq.ft. – 1 Bedroom

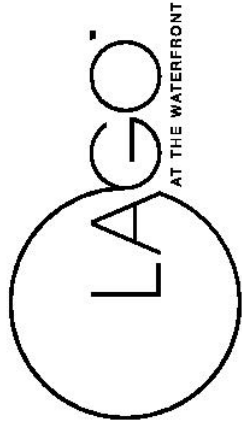
Balcony 95 sq.ft. | Total Living Area 645 sq.ft.



17th - 48th Floor

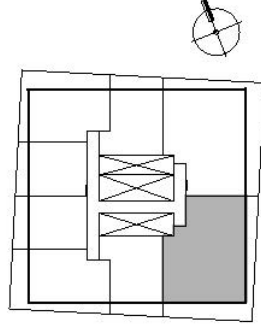
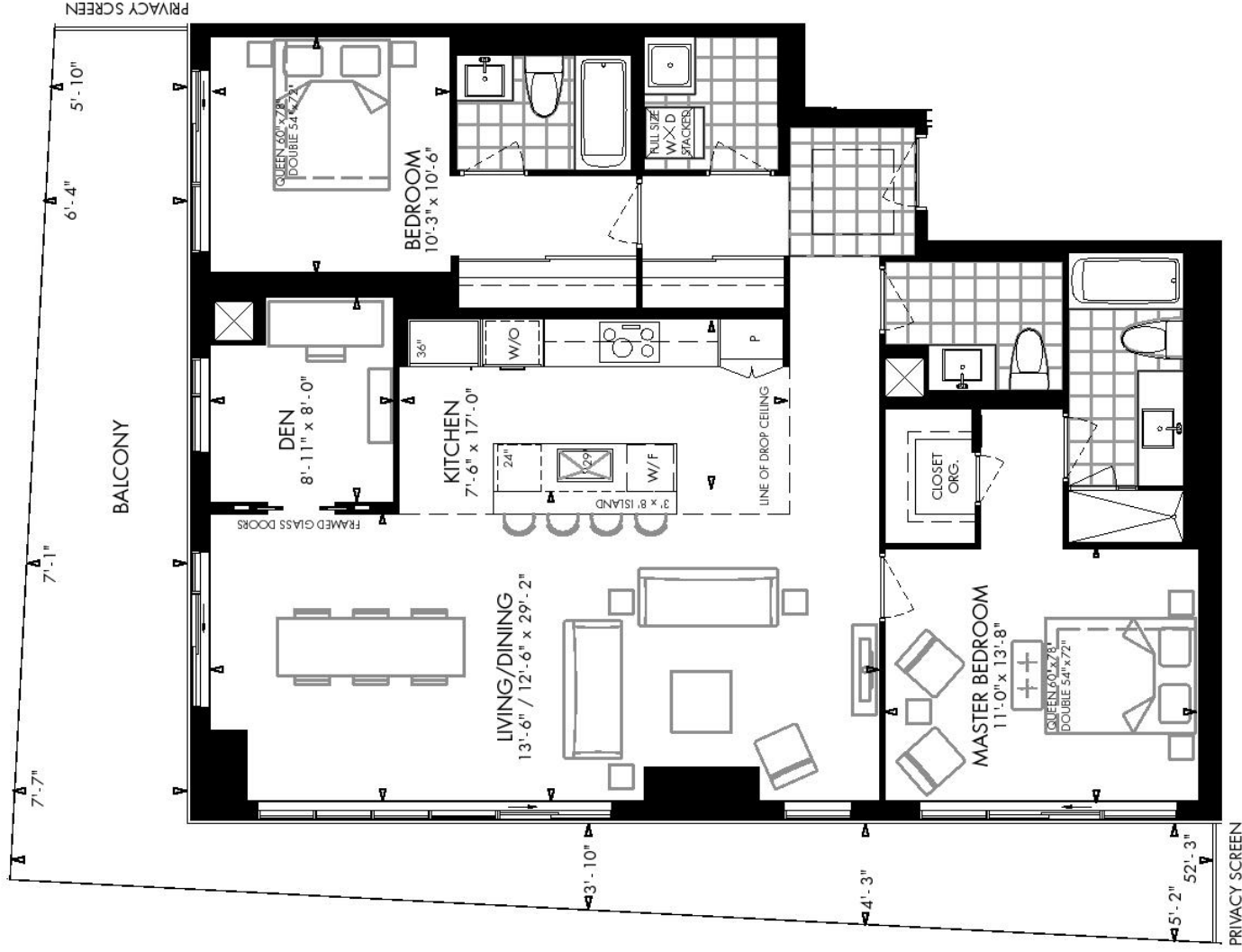
*Balcony locations, shapes, and sizes may vary.
Please ask a sales representative for details.

This plan is not to scale and is subject to architectural review and revision, including without limitation, the Unit being constructed with a layout that is the reverse of that set out above. All materials, specifications, details and dimensions, if any, are approximate and subject to change without notice in order to comply with building site conditions and municipal, structural, vendor and/or architectural requirements. Actual floor area may vary in accordance with Bulletin 22 published by the Tercon Warranty Corporation. Bulkheads are not shown on this plan and may be located in areas of the Unit as required to provide venting and mechanical systems. Balconies, Terraces and Patios if any are exclusive use common elements, shown for display purposes only and location and size are subject to change without notice. Window location, size and type may vary without notice. E.8.O.E



1401 sq.ft. – 2 Bedroom + Den

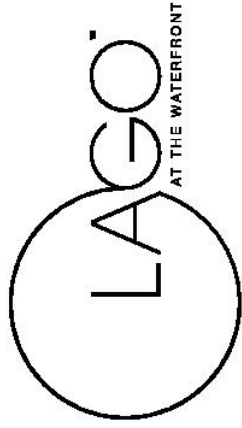
Balcony 420 sq.ft. | Total Living Area 1821 sq.ft.



41st - 48th Floor

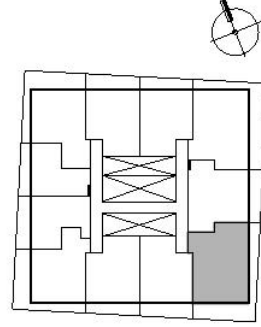
*Balcony locations, shapes, and sizes may vary. Please ask a sales representative for details.

This plan is not to scale and is subject to architectural review and revision, including without limitation, the Unit being constructed with a layout that is the reverse of that set out above. All materials, specifications, details and dimensions, if any, are approximate and subject to change without notice in order to comply with building site conditions and municipal, structural, Vendor and/or architectural requirements. Actual floor area may vary in accordance with Bulletin 22 published by the "Iron Warranty Corporation. Bulkheads are not shown on this plan and may be located in areas of the Unit as required to provide venting and mechanical systems. Balconies, Terraces and Patios if any are exclusive use common elements, shown for display purposes only and location and size are subject to change without notice. Window location, size and type may vary without notice. E.8.O.E



754 sq.ft. – 2 Bedroom + Den

Balcony 300 sq.ft. | Total Living Area 1054 sq.ft.

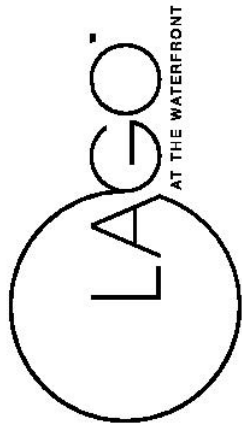


5th - 16th Floor

French Balcony on 5th floor.

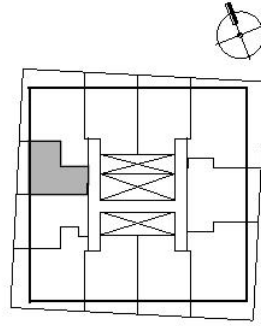
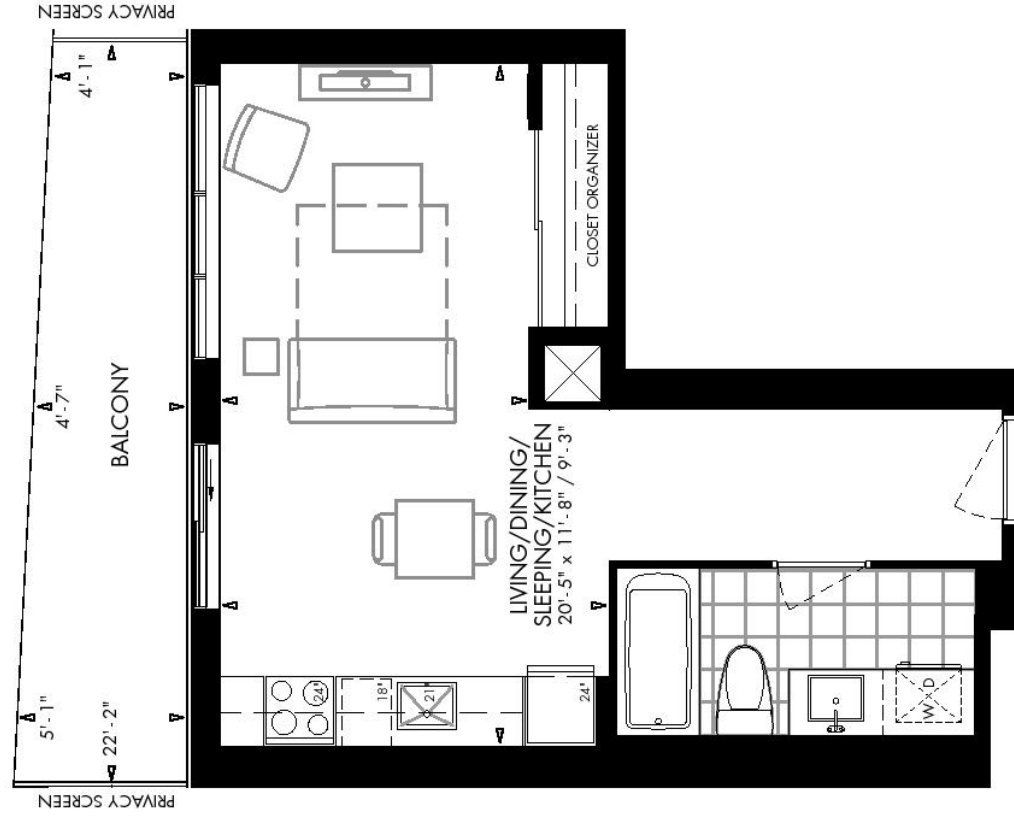
*Balcony locations, shapes, and sizes may vary.
Please ask a sales representative for details.

This plan is not to scale and is subject to architectural review and revision, including without limitation, the Unit being constructed with a layout that is the reverse of that set out above. All materials, specifications, details and dimensions, if any, are approximate and subject to change without notice in order to comply with building site conditions and municipal, structural, Vendor and/or architectural requirements. Actual floor area may vary in accordance with Bulletin Z2 published by the "Isiron Warranty Corporation. Bulkheads are not shown on this plan and may be located in areas of the Unit as required to provide venting and mechanical systems. Balconies, Terraces and Patios if any are exclusive use common elements, shown for display purposes only and location and size are subject to change without notice. Window location, size and type may vary without notice. E.B.O.E



420 sq.ft. – Studio

Balcony 95 sq.ft. | Total Living Area 515 sq.ft.

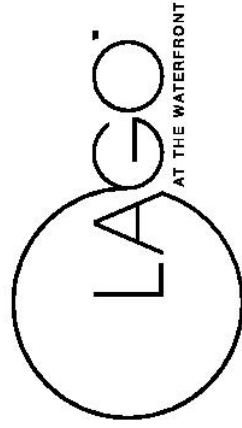


5th - 16th Floor

French Balcony on 5th floor.

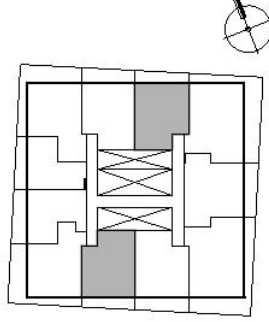
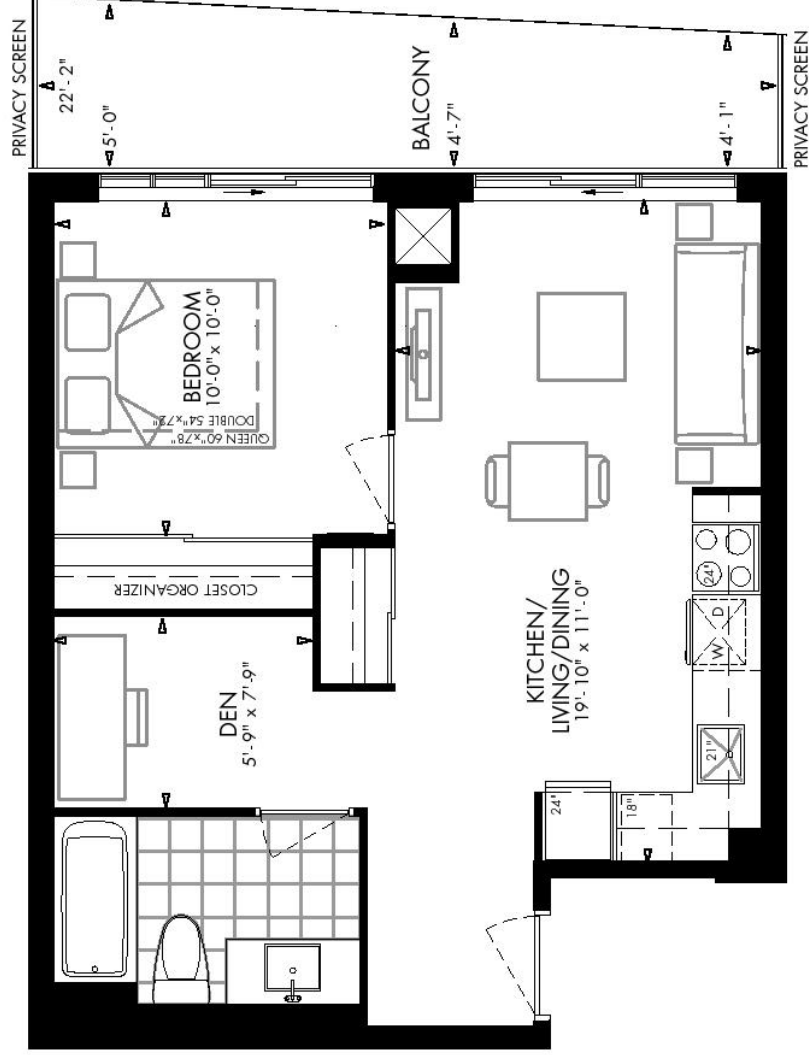
*Balcony locations, shapes, and sizes may vary.
Please ask a sales representative for details.

This plan is not to scale and is subject to architectural review and revision, including without limitation, the Unit being constructed with a layout that is the reverse of that set out above. All materials, specifications, details and dimensions, if any, are approximate and subject to change without notice in order to comply with building site conditions and municipal, structural, vendor and/or architectural requirements. Actual floor area may vary in accordance with Bulletin 22 published by the Taron Warranty Corporation. Bulkheads are not shown on this plan and may be located in areas of the Unit as required to provide venting and mechanical systems. Balconies, Terraces and Patios if any are exclusive use common elements, shown for display purposes only and location and size are subject to change without notice. Window location, size and type may vary without notice. E.&O.E



573 sq.ft. – 1 Bedroom + Den

Balcony 95 sq.ft. | Total Living Area 668 sq.ft.

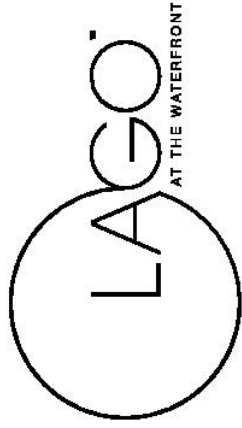


5th - 16th Floor

French Balcony on 5th floor.

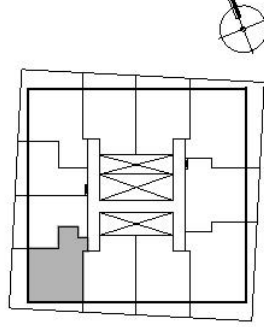
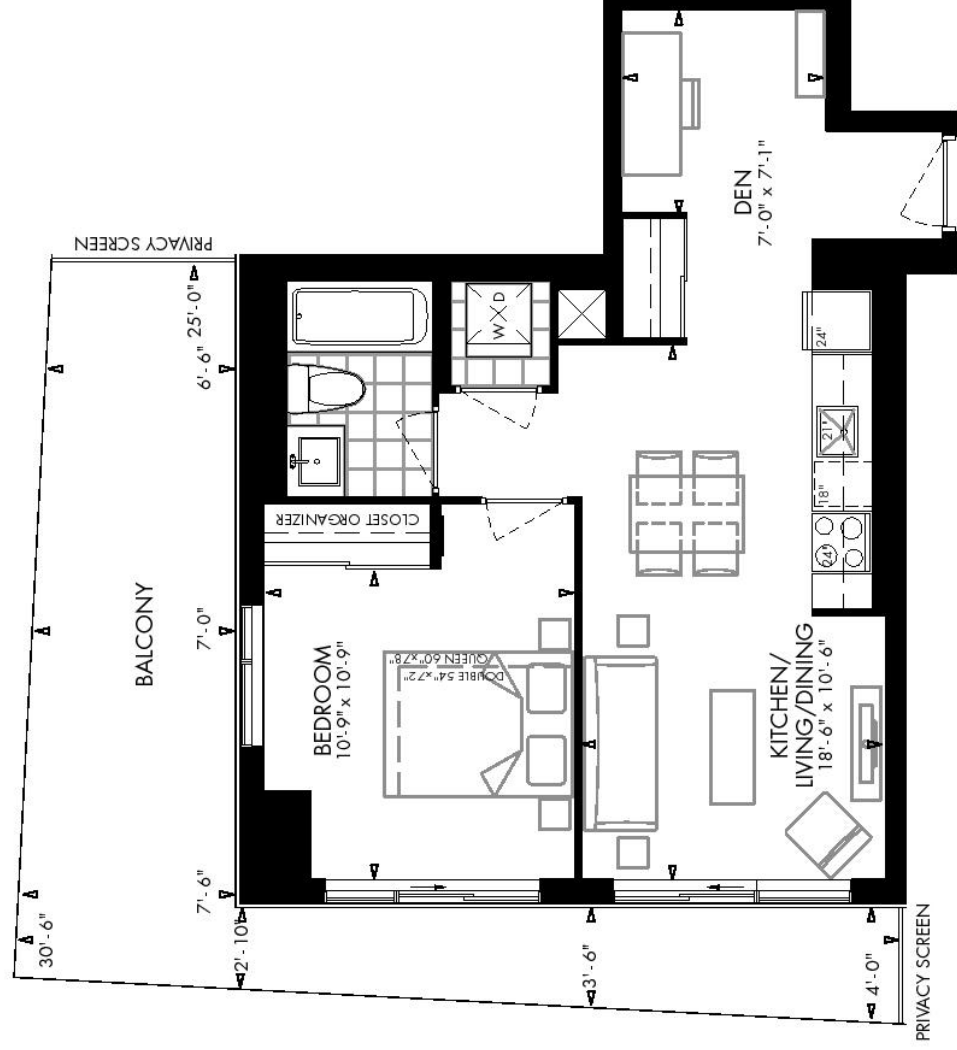
*Balcony locations, shapes, and sizes may vary.
Please ask a sales representative for details.

This plan is not to scale and is subject to architectural review and revision, including without limitation, the Unit being constructed with a layout that is the reverse of that set out above. All materials, specifications, details and dimensions, if any, are approximate and subject to change without notice in order to comply with building site conditions and municipal, structural, vendor and/or architectural requirements. Actual floor area may vary in accordance with Bulletin 22 published by the Tercon Warranty Corporation. Bulkheads are not shown on this plan and may be located in areas of the Unit as required to provide venting and mechanical systems. Balconies, Terraces and Patios if any are exclusive use common elements, shown for display purposes only and location and size are subject to change without notice. Window location, size and type may vary without notice. E.&O.E.



600 sq.ft. – 1 Bedroom + Den

Balcony 245 sq.ft. | Total Living Area 845 sq.ft.

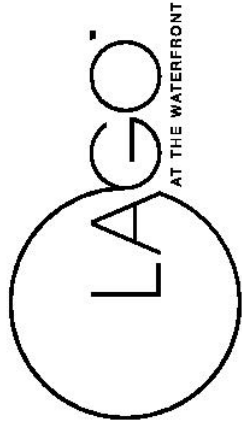


5th - 16th Floor

French Balcony on 5th floor.

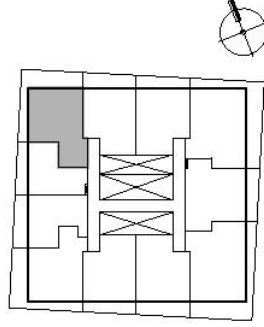
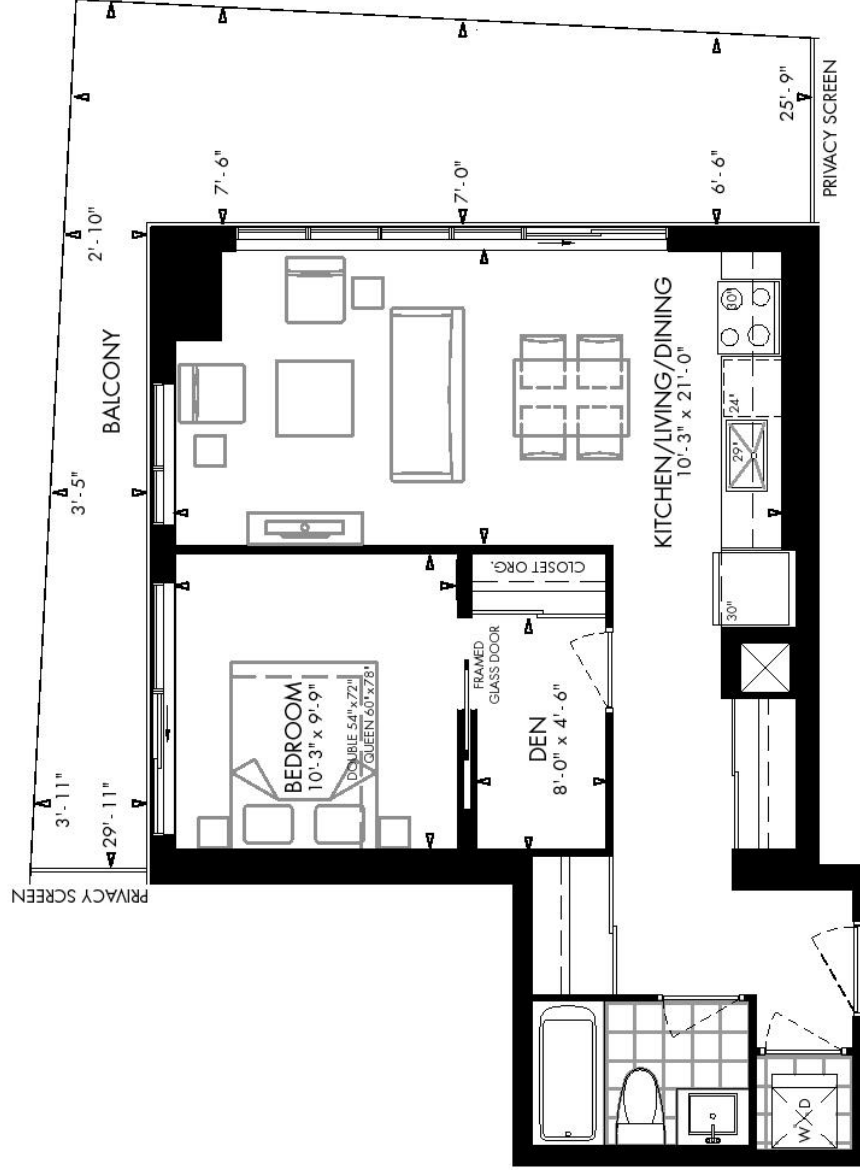
*Balcony locations, shapes, and sizes may vary.
Please ask a sales representative for details.

This plan is not to scale and is subject to architectural review and revision, including without limitation, the Unit being constructed with a layout that is the reverse of that set out above. All materials, specifications, details and dimensions, if any, are approximate and subject to change without notice in order to comply with building site conditions and municipal, structural, vendor and/or architectural requirements. Actual floor area may vary in accordance with Bulletin 22 published by the Talcon Warranty Corporation. Bulkheads are not shown on this plan and may be located in areas of the Unit as required to provide venting and mechanical systems. Balconies, Terraces and Patios if any are exclusive use common elements, shown for display purposes only and location and size are subject to change without notice. Window location, size and type may vary without notice. E.&O.E.



636 sq.ft. – 1 Bedroom + Den

Balcony 245 sq.ft. | Total Living Area 881 sq.ft.

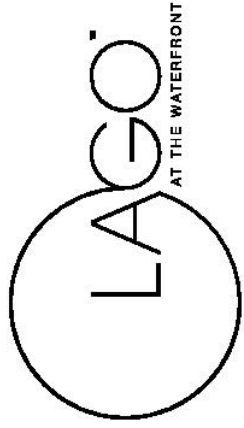


5th - 16th Floor

French Balcony on 5th floor.

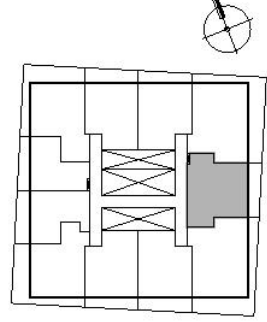
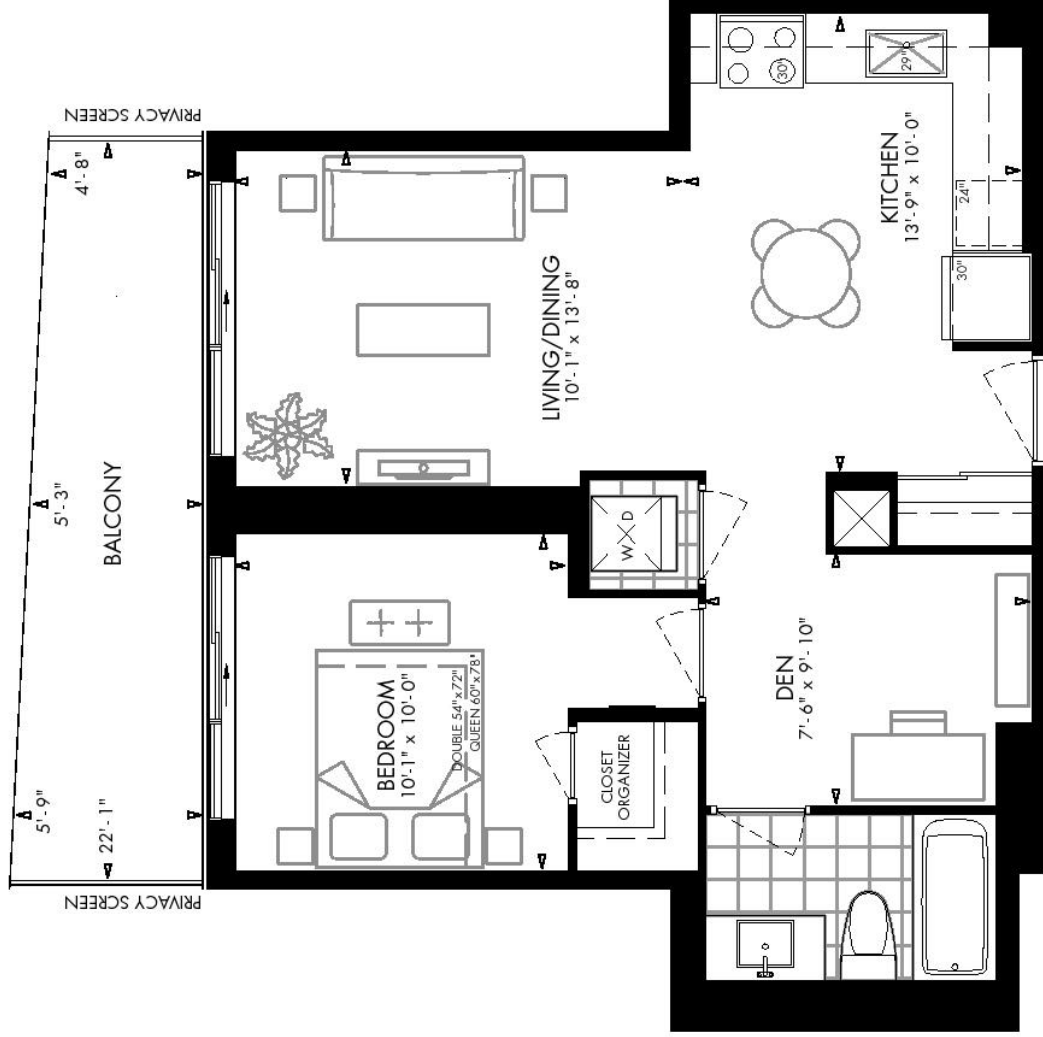
*Balcony locations, shapes, and sizes may vary. Please ask a sales representative for details.

This plan is not to scale and is subject to architectural review and revision, including without limitation, the Unit being constructed with a layout that is the reverse of that set out above. All materials, specifications, details and dimensions, if any, are approximate and subject to change without notice in order to comply with building site conditions and municipal, structural, Vendor and/or architectural requirements. Actual floor area may vary in accordance with Bulletin 22 published by the Talcon Warranty Corporation. Bulkheads are not shown on this plan and may be located in areas of the Unit as required to provide venting and mechanical systems. Balconies, Terraces and Patios if any are exclusive use common elements, shown for display purposes only and location and size are subject to change without notice. Window location, size and type may vary without notice. E.&O.E



652 sq.ft. – 1 Bedroom + Den

Balcony 95 sq.ft. | Total Living Area 747 sq.ft.

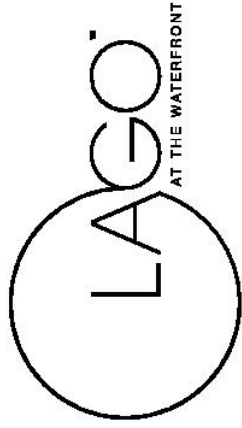


5th - 16th Floor

French Balcony on 5th floor.

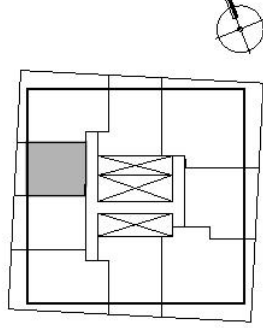
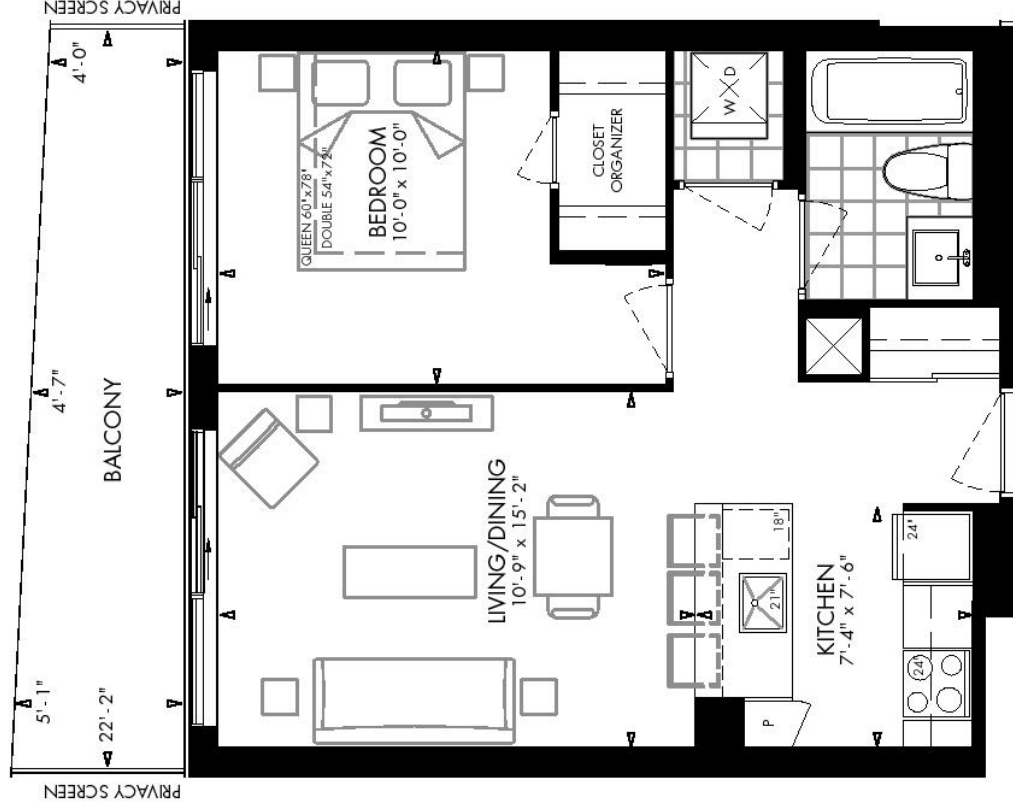
*Balcony locations, shapes, and sizes may vary.
Please ask a sales representative for details.

This plan is not to scale and is subject to architectural review and revision, including without limitation, the Unit being constructed with a layout that is the reverse of that set out above. All materials, specifications, details and dimensions, if any, are approximate and subject to change without notice in order to comply with building site conditions and municipal, structural, Vendor and/or architectural requirements. Actual floor area may vary in accordance with Bulletin 22 published by the Torion Warranty Corporation. Bulkheads are not shown on this plan and may be located in areas of the Unit as required to provide venting and mechanical systems. Balconies, Terraces and Patios if any are exclusive use common elements, shown for display purposes only and location and size are subject to change without notice. Window location, size and type may vary without notice. E.8.O.E



546 sq.ft. – 1 Bedroom

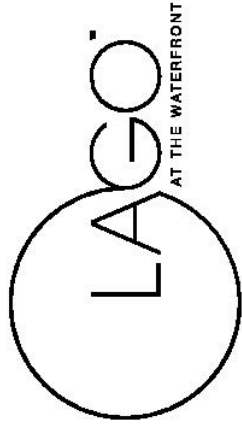
Balcony 95 sq.ft. | Total Living Area 641 sq.ft.



17th - 48th Floor

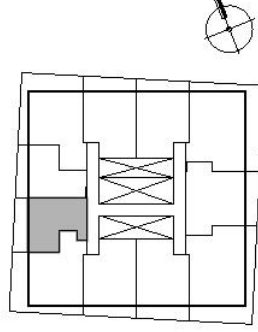
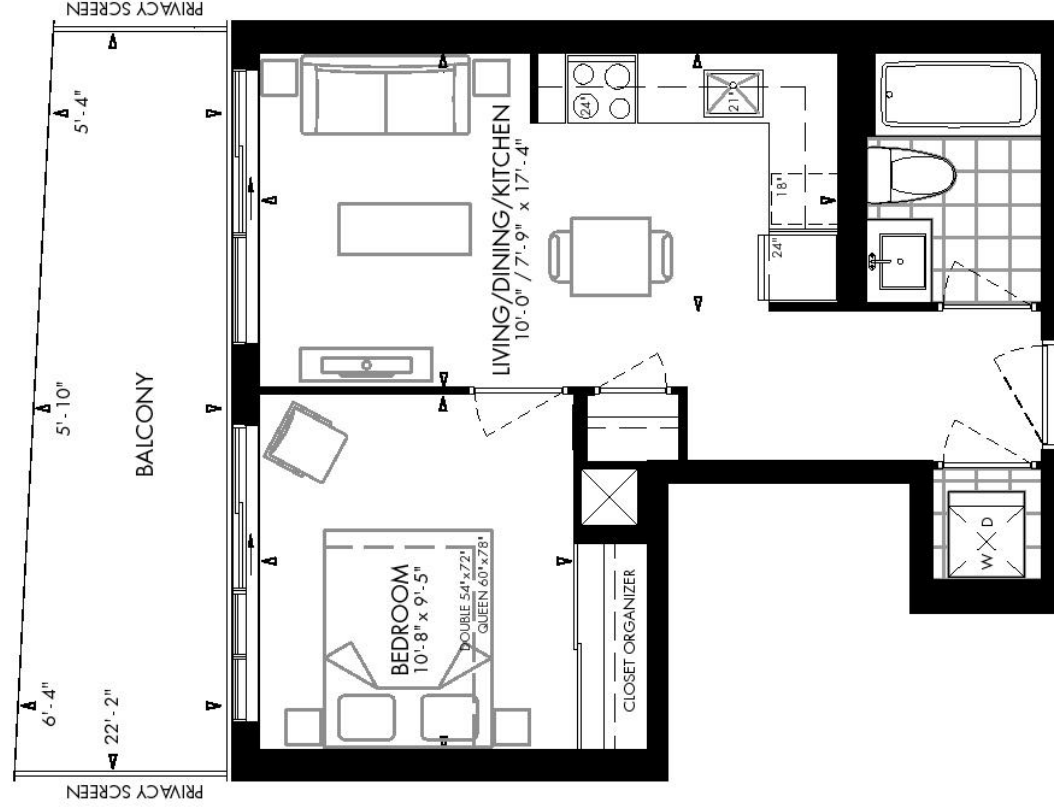
*Balcony locations, shapes, and sizes may vary.
Please ask a sales representative for details.

This plan is not to scale and is subject to architectural review and revision, including without limitation, the Unit being constructed with a layout that is the reverse of that set out above. All materials, specifications, details and dimensions, if any, are approximate and subject to change without notice in order to comply with building site conditions and municipal, structural, vendor and/or architectural requirements. Actual floor area may vary in accordance with Bulletin 22 published by the Talcon Warranty Corporation. Bulkheads are not shown on this plan and may be located in areas of the Unit as required to provide venting and mechanical systems. Balconies, Terraces and Patios if any are exclusive use common elements, shown for display purposes only and location and size are subject to change without notice. Window location, size and type may vary without notice. E.&O.E



461 sq.ft. – 1 Bedroom

Balcony 95 sq.ft. | Total Living Area 556 sq.ft.

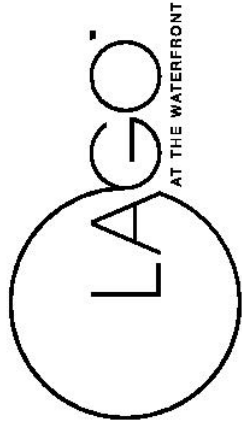


5th - 16th Floor

French Balcony on 5th floor.

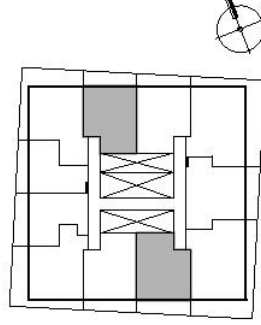
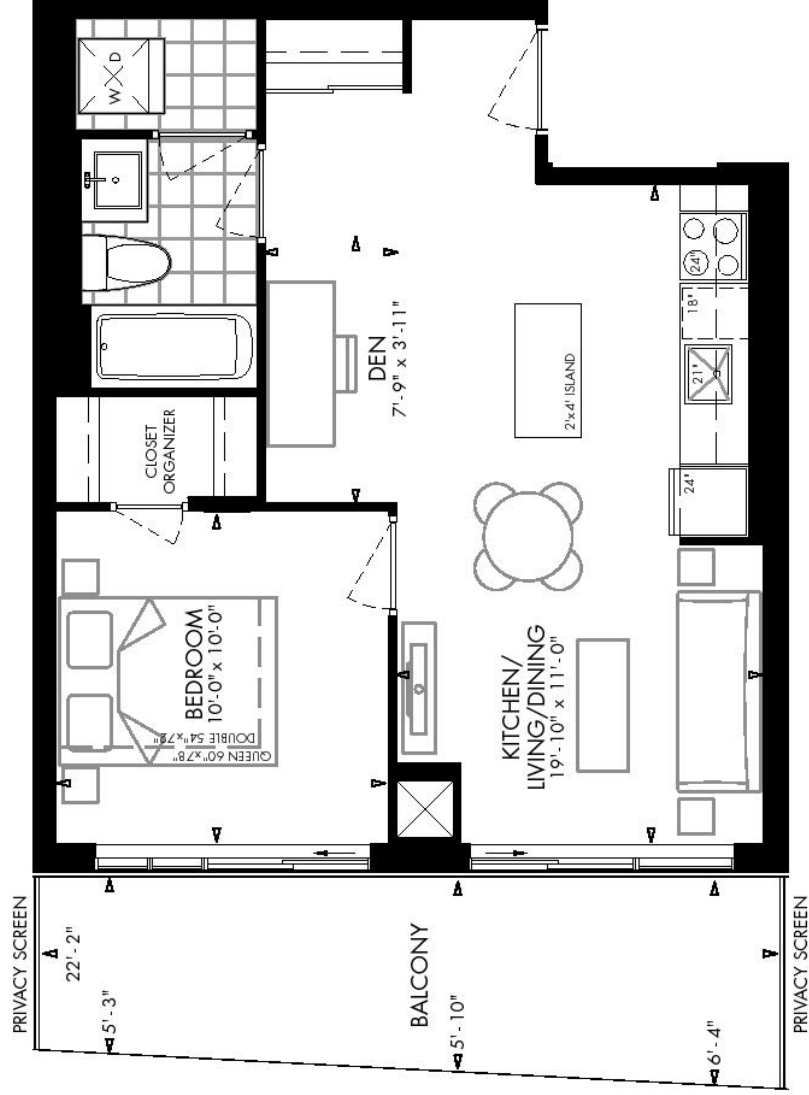
*Balcony locations, shapes, and sizes may vary.
Please ask a sales representative for details.

This plan is not to scale and is subject to architectural review and revision, including without limitation, the Unit being constructed with a layout that is the reverse of that set out above. All materials, specifications, details and dimensions, if any, are approximate and subject to change without notice in order to comply with building site conditions and municipal, structural, vendor and/or architectural requirements. Actual floor area may vary in accordance with Bulletin 22 published by the Tercon Warranty Corporation. Bulkheads are not shown on this plan and may be located in areas of the Unit as required to provide venting and mechanical systems. Balconies, Terraces and Patios if any are exclusive use common elements, shown for display purposes only and location and size are subject to change without notice. Window location, size and type may vary without notice. E.&O.E



574 sq.ft. – 1 Bedroom + Den

Balcony 95 sq.ft. | Total Living Area 669 sq.ft.

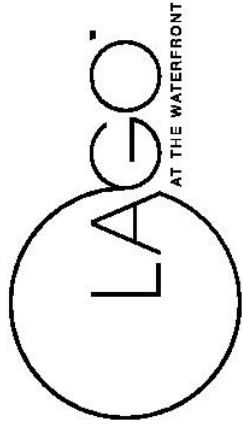


5th - 16th Floor

French Balcony on 5th floor.

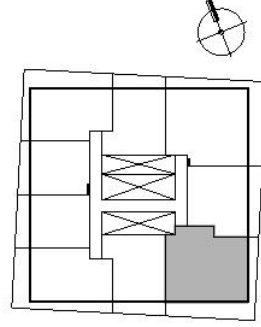
*Balcony locations, shapes, and sizes may vary.
Please ask a sales representative for details.

This plan is not to scale and is subject to architectural review and revision, including without limitation, the Unit being constructed with a layout that is the reverse of that set out above. All materials, specifications, details and dimensions, if any, are approximate and subject to change without notice in order to comply with building site conditions and municipal, structural, Vendor and/or architectural requirements. Actual floor area may vary in accordance with Bulletin 22 published by the Tercon Warranty Corporation. Bulkheads are not shown on this plan and may be located in areas of the Unit as required to provide venting and mechanical systems. Balconies, Terraces and Patios if any are exclusive use common elements, shown for display purposes only and location and size are subject to change without notice. Window location, size and type may vary without notice. E.8.O.E



1002 sq.ft. – 2 Bedroom + Den

Balcony 325 sq.ft. | Total Living Area 1327 sq.ft.



17th - 40th Floor

*Balcony locations, shapes, and sizes may vary.
Please ask a sales representative for details.

This plan is not to scale and is subject to architectural review and revision, including without limitation, the Unit being constructed with a layout that is the reverse of that set out above. All materials, specifications, details and dimensions, if any, are approximate and subject to change without notice in order to comply with building site conditions and municipal, structural, Vendor and/or architectural requirements. Actual floor area may vary in accordance with Bulletin 22 published by the Taron Warranty Corporation. Bulkheads are not shown on this plan and may be located in areas of the Unit as required to provide venting and mechanical systems. Balconies, Terraces and Patios if any are exclusive use common elements, shown for display purposes only and location and size are subject to change without notice. Window location, size and type may vary without notice. E.8.C.E