

452 sq.ft.



Queen's Quay West  
FLOORS 16-32

LIVING AREA

17'-5"

15'-11"

KITCHEN

7'-4"

8'-1"

FOYER

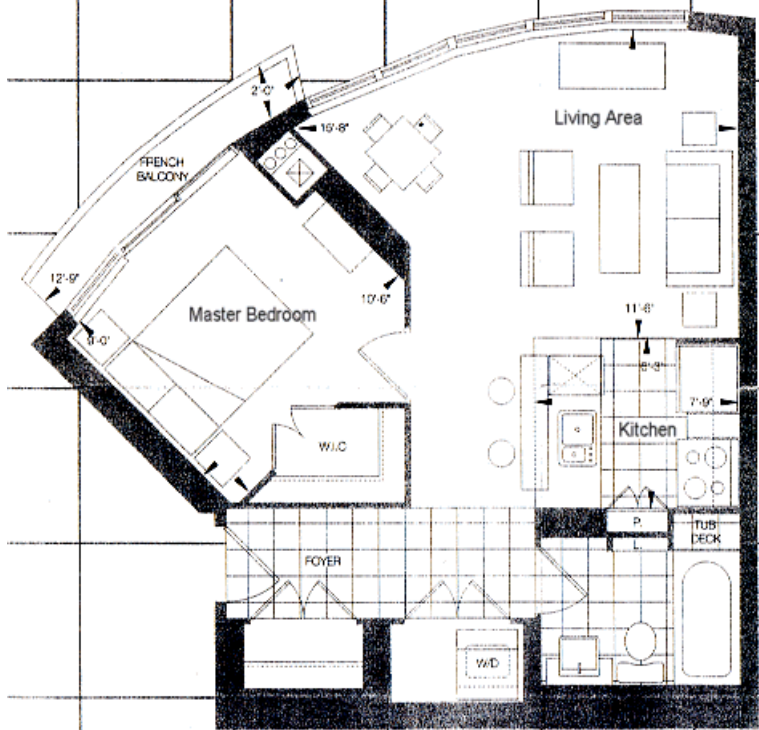
5'-0"

4'-2"

P.

York Street

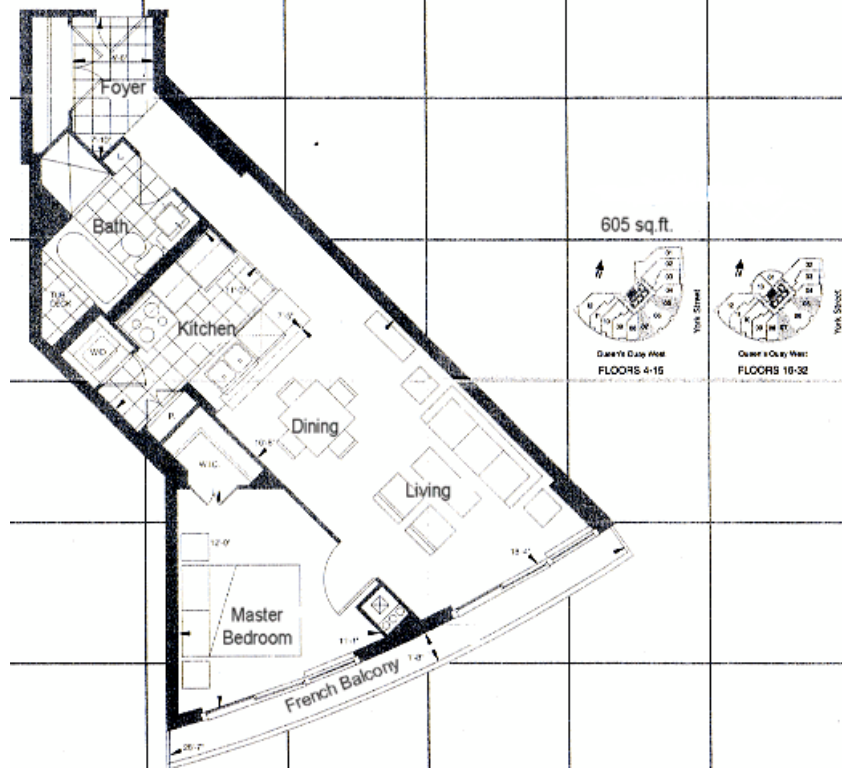


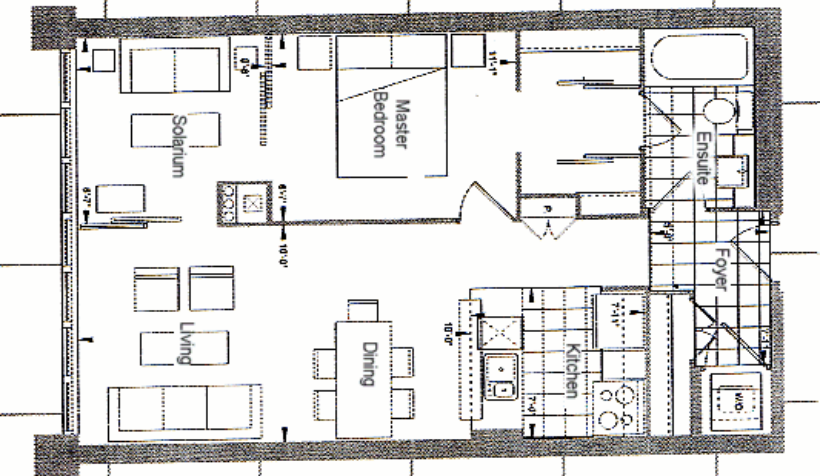


555 sq.ft.



Queen's Quay West  
 FLOORS 16-32

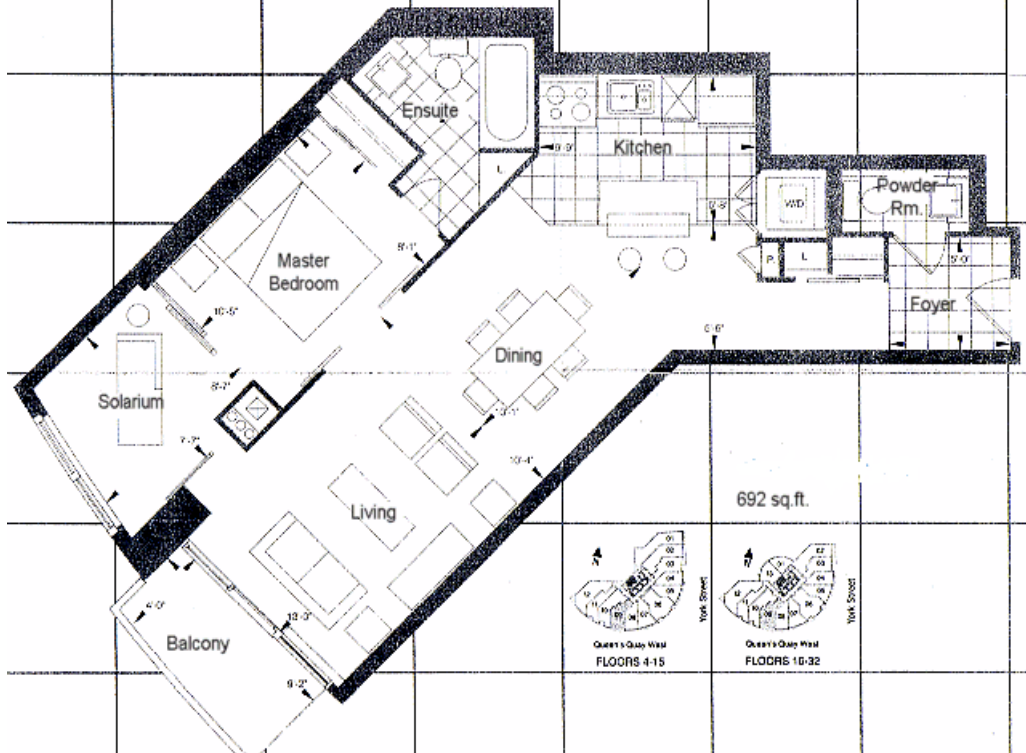


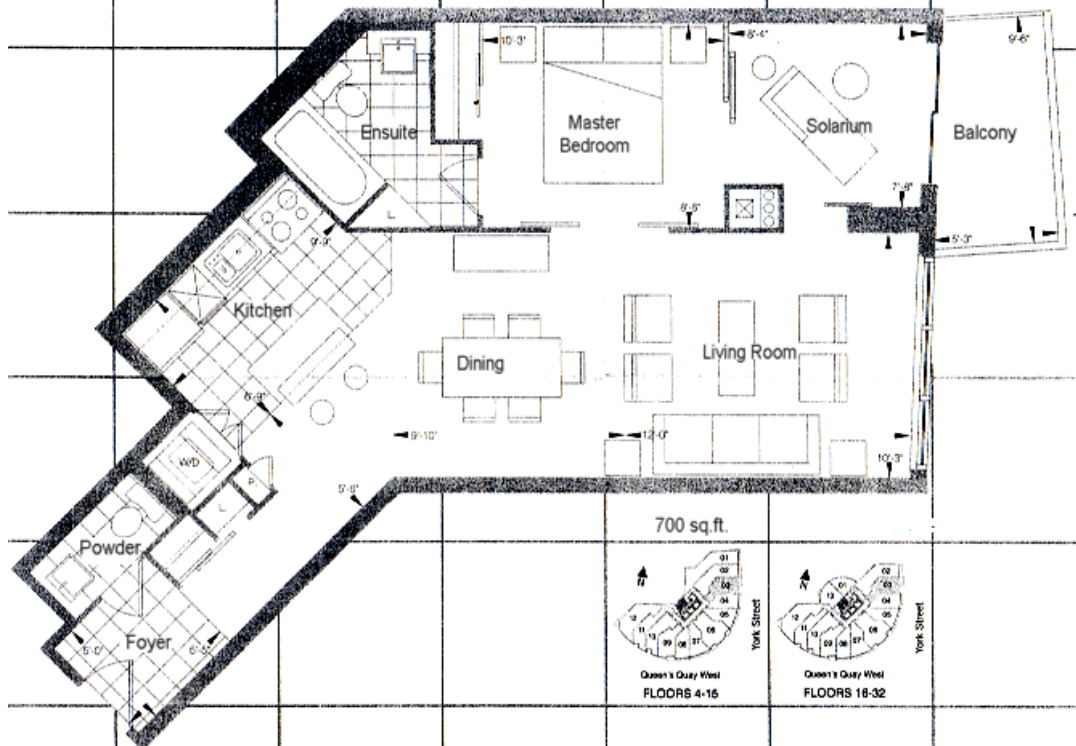


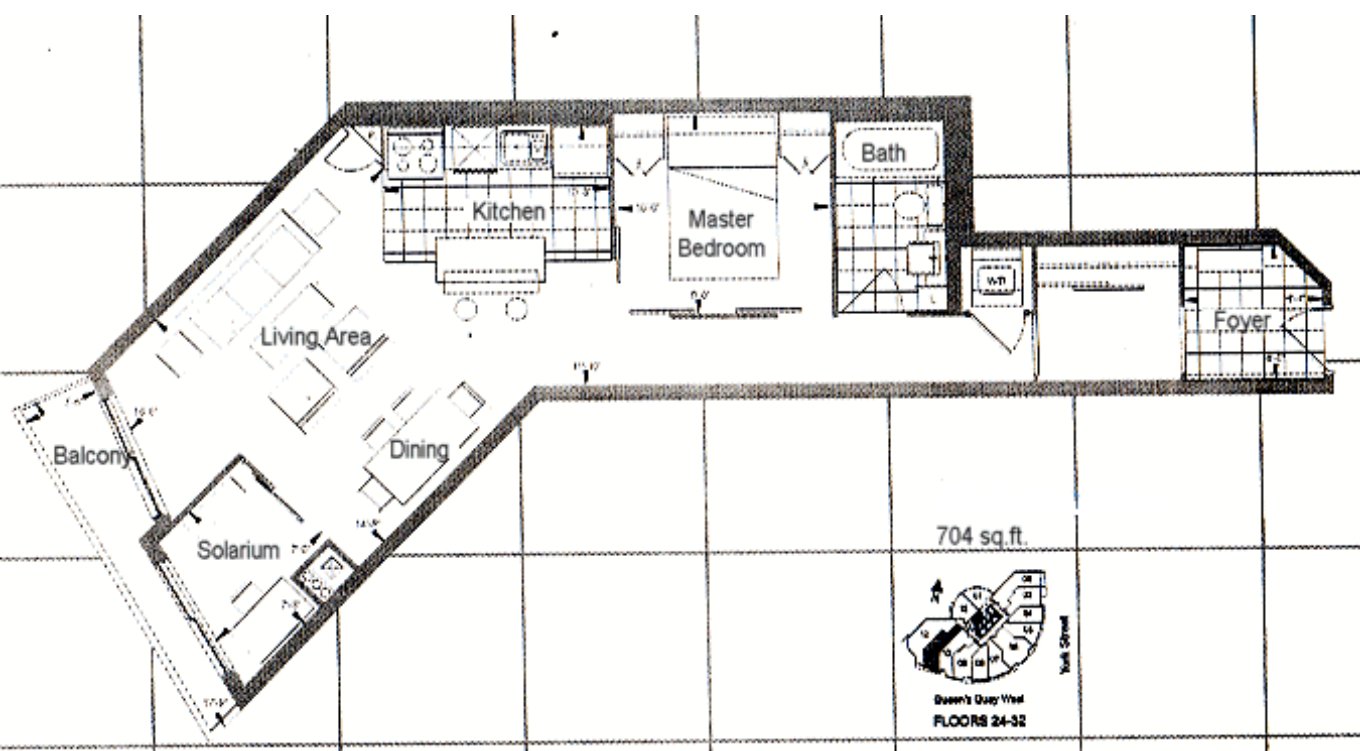
648 sq. ft.



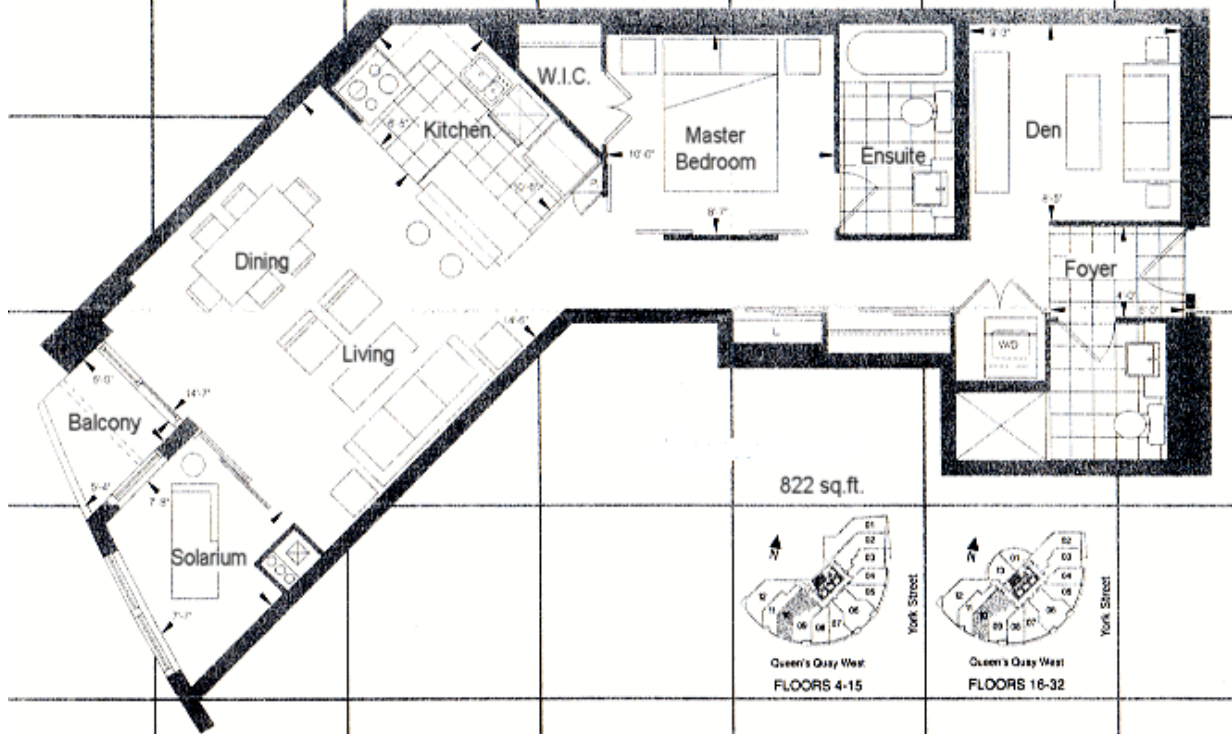
York Street

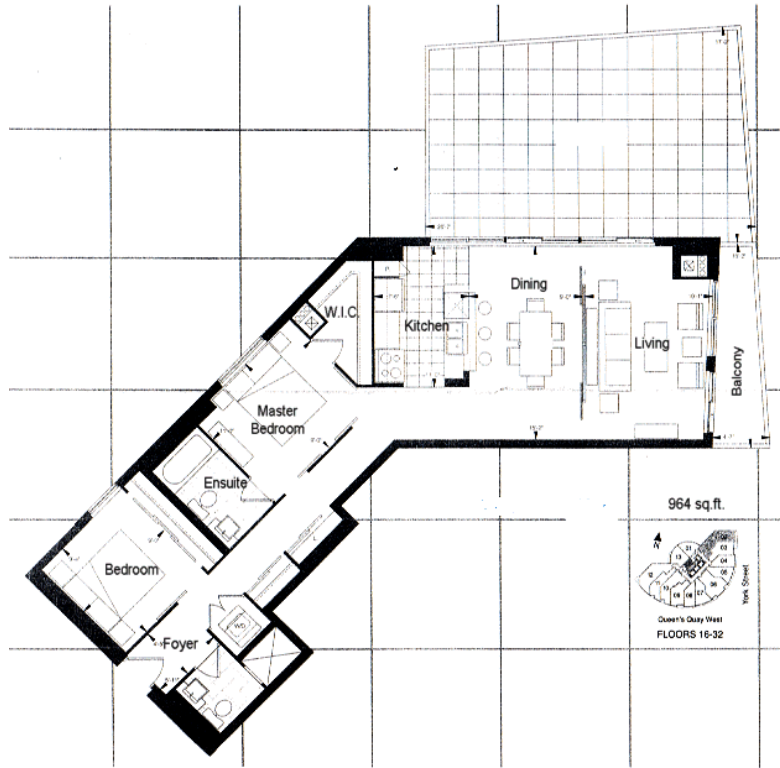










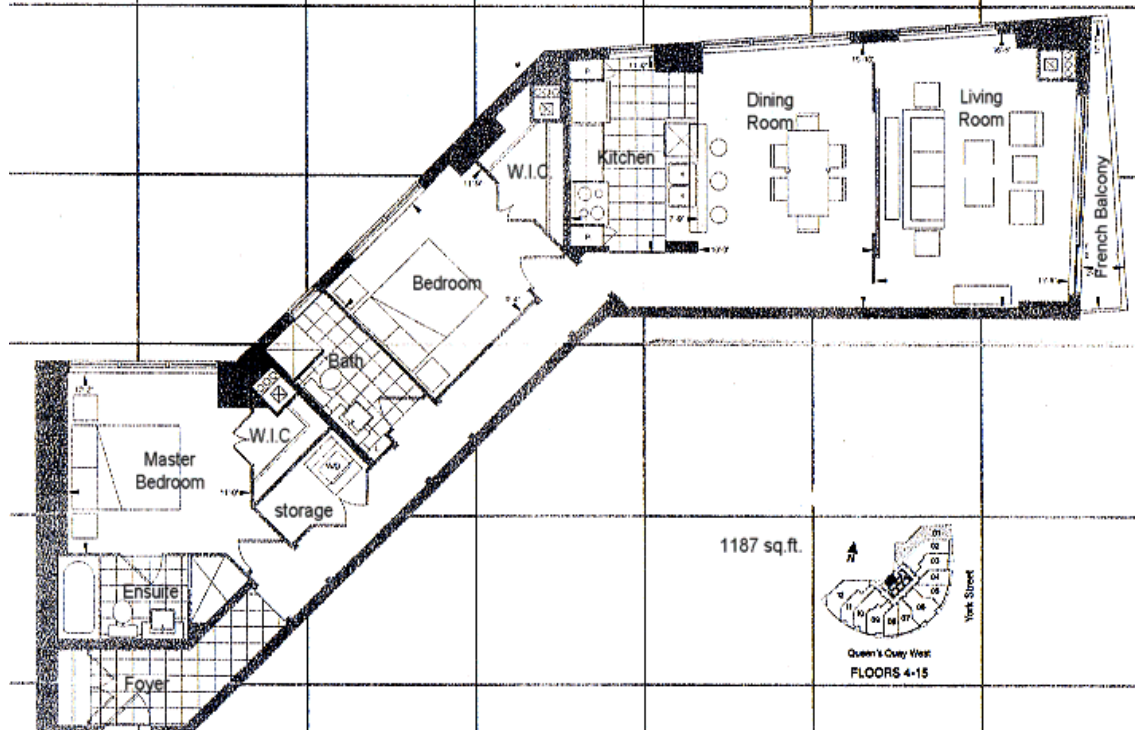


964 sq. ft.



York Street

Queen's Quay West  
FLOORS 16-32



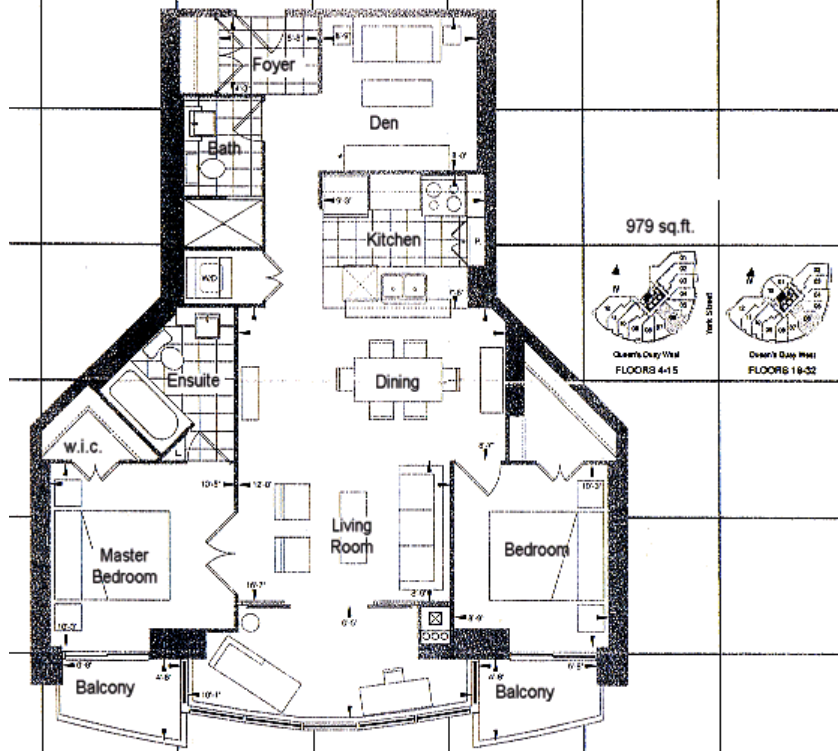
1187 sq. ft.



Queen's Quay West  
FLOORS 4-15

**WATER E**  
TWO BEDROOM / DEN / SOLARIUM  
971 SQ.FT.

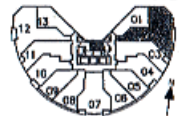




# PHASE II

WATER Hb  
Two Bedroom + Solarium  
1230 sq. ft.

VIEW (NSE)



FLOORS 4-15

